

GOVERNMENT CORNER RESTORATION FORM

FILED

Date: 3/1/2010 By: JC

Township 29S Range 7W Sec. 21 County DOUGLAS The survey consists of:

State OREGON Date FEB. 8, 2010 No. _____

Map: _____

Narrative: _____

Corner Rpt: 65/69-1

Corner Designation

CENTER 1/4
BLM 1966

DOUGLAS COUNTY

Condition Report Only

Not Found

Renewed

Unrecorded

Surveyed In

Referred Out

MONUMENT DETAIL

Previous Renewals _____

Monument(s) Found: (Condition and Source)

CORNER IS IN 1974 FIRE AREA,
WHICH WAS LOGGED IN 1975.

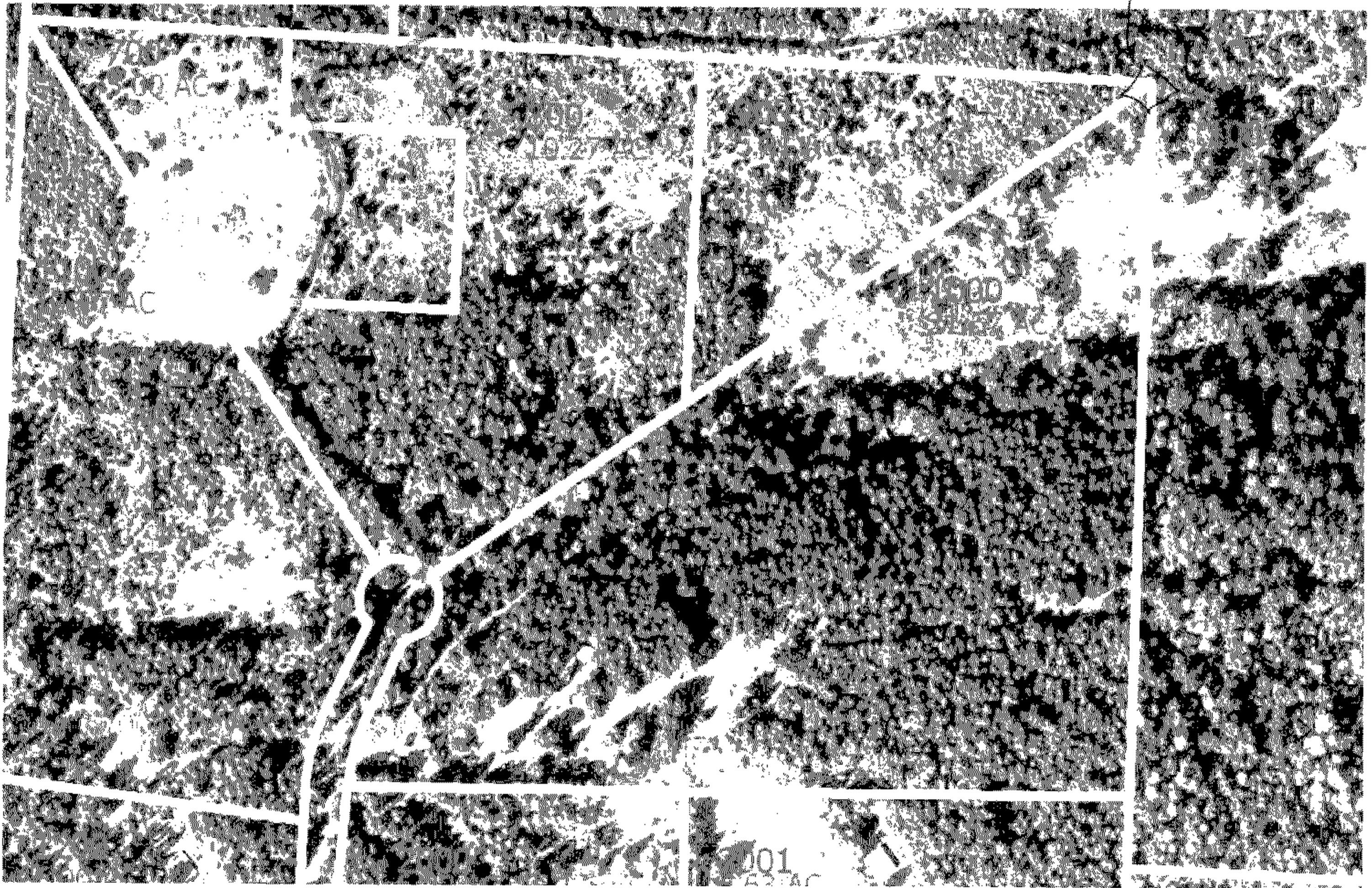
FOUND POSSIBLE BT LOG, WHICH
IS 24" D. FIR LOG W/ AXE MARKS
ON BURNED BLAZE W/ BLUE
PAINT. NO INDICATION WHERE
STUMP WAS. WITH METAL
DETECTOR, DID NOT FIND
BRASS CAP AND IRON PIPE.

APPARENTLY IP WAS DISLODGED
DURING LOGGING IN 1975.

Accessories Found:

S.21, T29S, R7W, W.M.

C14



TO SEE A COLOR VERSION OF THIS MAP - SEE THE ORIG. IN THE CS FILE.

C.S. File No 65/69-1B