

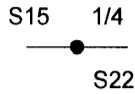
OREGON CORNER RESTORATION FORM

Section 22 Township 26 S Range 3 W  
 County Douglas Date 9/2/09

**FILED**  
 Date: 9-15-2009 By: JC  
 This survey consists of:  
 Map: \_\_\_\_\_  
 Narrative: \_\_\_\_\_  
 Corner Rpt: C.S. 65/66-38

Corner Designation

T. 26 S. R. 3 W.



- \_\_\_\_\_ Condition Report Only
- \_\_\_\_\_ Not Found
- \_\_\_\_\_ Renewed
- \_\_\_\_\_ Unrecorded
- X \_\_\_\_\_ Surveyed In
- \_\_\_\_\_ Referenced Out

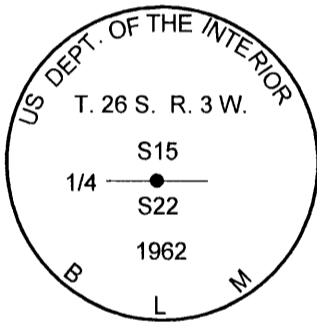
**DOUGLAS COUNTY  
 SURVEYOR**

Previous Renewals/Surveys, etc. 1964 BLM plat,

Monument(s) & Accessories Found: (Condition and Source)

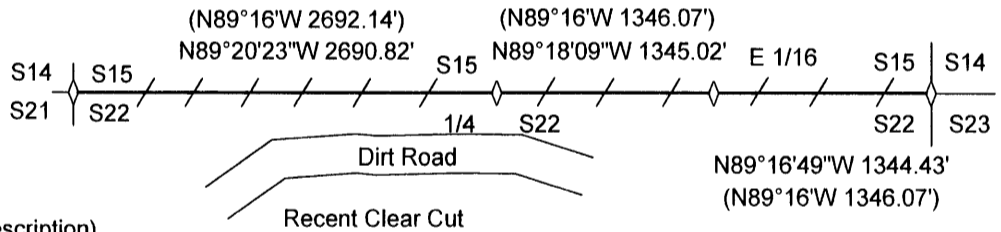
50" Fir snag bears N5°W 82.5 ft. as per record (did not measure) healed face and tag.  
9" Douglas Fir Bears N19 3/4°E 11.2 ft. no record BLM tag reads S18°E 17 lks. healed face.

Monument Detail



**LEGEND:**

- LINE BLAZED AND PAINTED
- 1962 COUNTY CAP
- 1962 BLM RESURVEY



Monument Set (Procedures and Description)

New Accessories

22" Douglas fir bears N55°W 39.0 ft. we scribe 1/4 S22 BT and tag.

Location & Comments

Corner lies on north slope  
approx. 15 feet north of  
dirt road at north edge  
of clear cut.

Compass Bearing Basis of bearing from GPS  
 Firm/Agency Lone Rock Timber Co.  
 Address P. O. Box 1127  
Roseburg, Ore. 97470  
 Party Chief Ken W. Hoffine  
 Notes Gary Angiolet  
 Witness Iginaco Roman

REGISTERED  
**PROFESSIONAL  
 LAND SURVEYOR**

*Ken W. Hoffine*  
 OREGON  
 JULY 16, 1987  
**KEN W. HOFFINE**  
 PLS 2291

EXPIRES 6-30-11

**C.S. File No** 65/66-38