

CORNER RENEWAL: FOR: LONE ROCK TIMBERLAND CO.

SECTION 10 THE SE 1/4 T. 27 S. R. 3 W., W. M.
 DOUGLAS COUNTY, OREGON
 SURVEYED BY: LONE ROCK TIMBER MANAGEMENT CO.
 P. O. BOX 1127 ROSEBURG, OREGON 97470
 AUGUST 2008

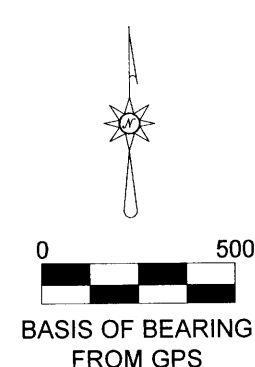
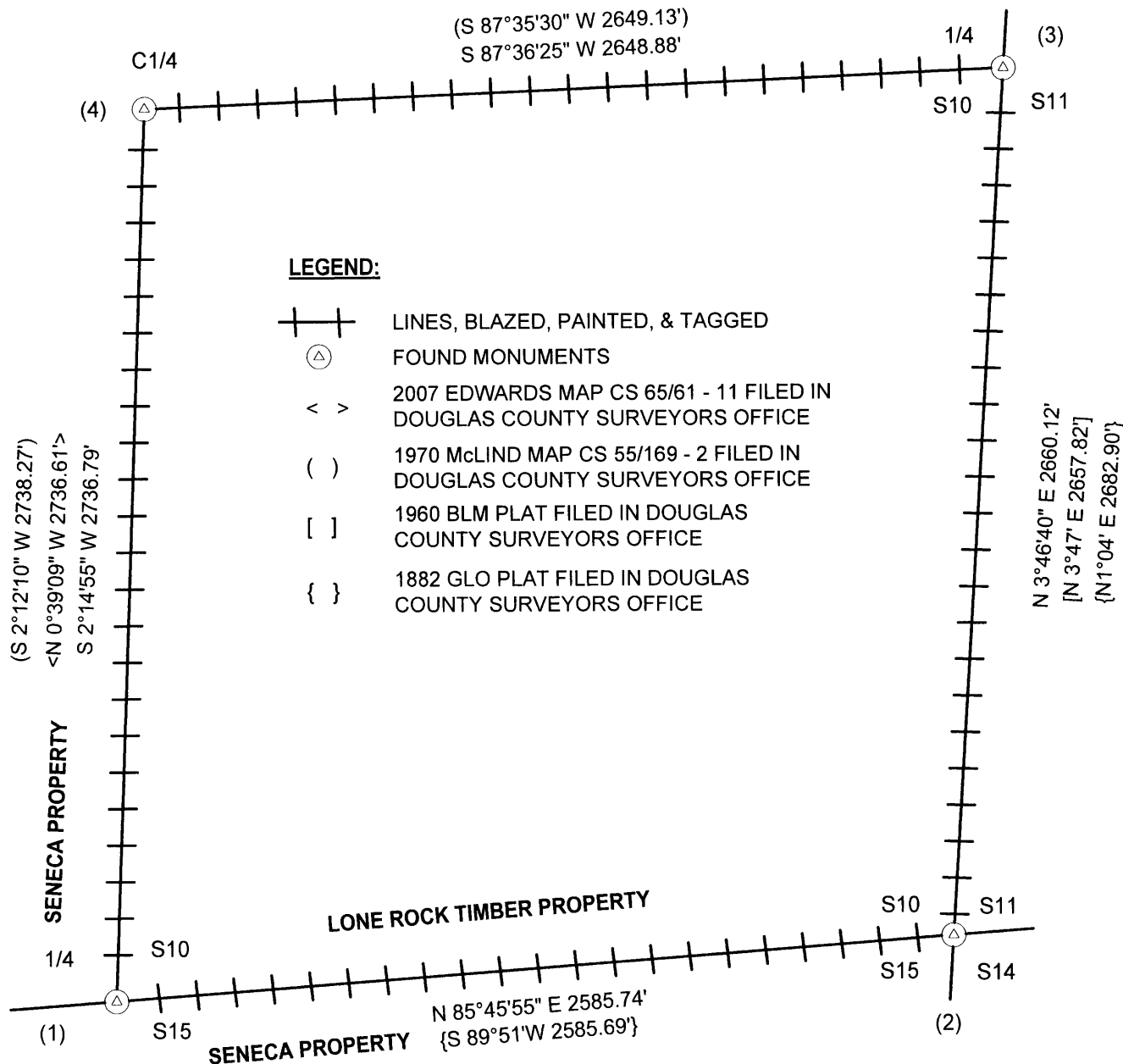
FILED
 Date: 9-17-2008 By: JC
 This survey consists of:
 Map:
 Narrative:
 Corner Rpt. 65/63-30
DOUGLAS COUNTY
SURVEYOR

NARRATIVE:

THE PURPOSE OF THIS SURVEY WAS TO ESTABLISH AND MARK PROPERTY LINES FOR TIMBER CUTTING PURPOSES FOR ADJACENT OWNERS, LONE ROCK TIMBERLAND CO. AND SENECA-JONES. WE INITIATED THIS SURVEY AT THE SOUTH 1/4 OF SECTION 10 RUNNING A RANDOM CLOSED TRAVERSE AROUND THE SE 1/4 OF SECTION 10. WE ALSO RAN A GPS SURVEY OF TWO OF OUR RANDOM TRAVERSE POINTS, WHICH LIE IN THE OPEN FROM A RECENT FOREST FIRE NORTH OF THE SOUTH 1/4, WHICH WE USED TO ESTABLISH A BASE LINE FOR A BASIS OF BEARING. WE BLAZED, PAINTED, RIBBONED AND TAGGED THE PROPERTY LINES BETWEEN THE FOUND CORNERS AS SHOWN ON THIS MAP AND PUT 5' METAL FENCE POSTS AT INTERVALS OF LESS THAN 200 FEET ON THE SOUTH LINE OF THE PROPERTY THAT HAS BEEN HEAVILY BURNED BY A 2008 FIRE. THIS SURVEY WAS DONE WITH A TRIMBLE SSE AND 4400 GPS EQUIPMENT AND A NIKON DTM 522 TOTAL STATION WITH GARY ANGIOLET AND IGNACIO ROMAN ASSISTING ME.

CORNER INFORMATION:

- 1) THE QUARTER CORNER BETWEEN SECTIONS 10 AND 15
 FOUND 1957 DOUGLAS COUNTY CAP.
 -- 21" WHITE FIR BEARS N51 3/4°E, 7.1 FEET (RECORD N52°E, 6.6 FEET) HEALED FACE AND TAG
 -- 16" DOUGLAS FIR BEARS N57 3/4°W, 17.8 FEET (RECORD N58°W, 18.0 FEET) HEALED FACE AND TAG
 -- 8" DOUGLAS FIR BEARS S69 3/4°E, 9.9 FEET (RECORD S53 1/2°E, 9.7 FEET) HEALED FACE AND TAG
 CORNER LIES IN 7/08 BURN SO ALL BT'S ARE DEAD APPROX. 125 FEET NORTH OF ROCK ROAD. METAL POST APPROX 2.0 FEET WEST OF CORNER.
- 2) THE SOUTHEAST SECTION CORNER FOR SECTION 10
 FOUND 1957 DOUGLAS COUNTY CAP.
 -- 28" CEDAR BEARS N67°E, 28.9 FEET (RECORD N66°E, 28.71 FEET) HEALED FACE AND TAG
 -- 32" WHITE FIR BEARS S69 1/2°E, 13.6 FEET (RECORD S68°E, 12.54 FEET) HEALED FACE AND TAG
 -- 22" FIR SNAG BEARS S12 1/2°E, 51.1 FEET (RECORD S13°E, 51.48 FEET) HEALED FACE AND TAG
 -- 33" CEDAR BEARS S54 1/2°W, 18.8 FEET (RECORD S58°W, 19.14 FEET) HEALED FACE AND TAG
 -- 30" CEDAR BEARS N42 3/4°W, 77.4 FEET (RECORD N43°W, 77.22 FEET) HEALED FACE AND TAG
 -- 1958 BLM BRASS CAP BEARS N58°30'E, 0.32 FEET
 CORNER LIES IN MOUND OF STONES AND APPROXIMATELY 150 FEET WEST OF ROCK ROAD.
- 3) THE QUARTER CORNER BETWEEN SECTIONS 10 AND 11
 FOUND 1958 BLM BRASS CAP.
 -- 14" DOUGLAS FIR BEARS S50 3/4°W, 48.8 FEET (RECORD S50 3/4°W, 48.84 FEET) HEALED FACT AND TAG
 -- 13" DOUGLAS FIR STUMP BEARS S51 1/2°W, 43.3 FEET (RECORD S52°W, 43.56 FEET) NO MARKS OR TAG
 -- 22" DOUGLAS FIR BEARS N58 1/2°E, 29.1 FEET (RECORD N59 3/4°E, 29.04 FEET) HEALED FACE AND TAG
 CORNER LIES ON NORTH SLOPE APPROXIMATELY 75 FEET NORTH OF DIRT ROAD.
- 4) THE CENTER 1/4 OF SECTION 10
 FOUND 5/8" IRON ROD SET CS 55/169-2
 -- 19" WHITE FIR BEARS N62 3/4°E, 34.7 FEET (RECORD N63°E, 34.8 FEET) HEALED FACE AND TAG
 -- 17" WHITE FIR BEARS N45 3/4°W, 14.2 FEET (RECORD N45°W, 14.4 FEET) HEALED FACE AND TAG
 CORNER LIES ON NORTH FACING SLOPE WITH IRON PIPE 0.3 FEET SOUTH.



REGISTERED
 PROFESSIONAL
 LAND SURVEYOR
Ken W. Hoffine
 OREGON
 JULY 16, 1987
 KEN W. HOFFINE
 PLS 2291
 EXPIRES 6-30-09