

RESTORED CORNER

DOUGLAS COUNTY SURVEYOR

CORNER Sections 7-8/18-17, T21S, R5W, W.M.

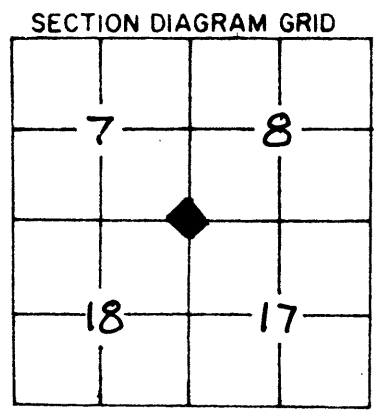
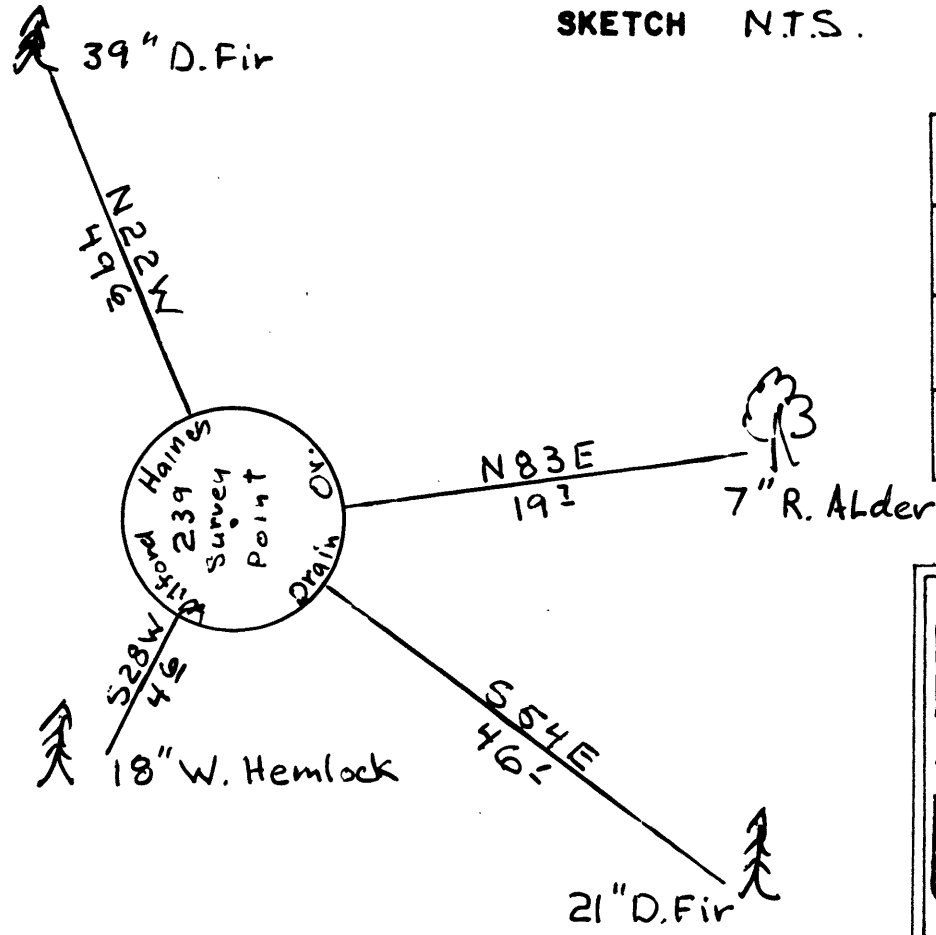
EVIDENCE 3/4" x 3/4" "T" post w/ 1" Brass Plate "HAINES 239" Facing West, 3' above grade

ACCESSORIES 18" W. Hemlock (FIR) S28W, 46', Healed Face 39" D. Fir, N22W, 49', Healed Face 21" D. Fir, S54E, 46', Healed Face 7" R. Alder, N83E, 19', Bark Scribed "T21S R5W SB BT"

NOTES AND OTHER INFORMATION Set 5' Steel Post 1' west ALL DISTANCES TO SIDE CENTER (NAIL) OF NEW B.T.S

BY: Harvey Christensen FIRM: NW Timberland Consulting TITLE: President DATE: 9/2000

SKETCH N.T.S.



SEAL ORS 672-025 REGISTERED PROFESSIONAL LAND SURVEYOR Harvey M. Christensen OREGON MARCH 16, 1993 HARVEY M CHRISTENSEN 2803