

FILED

DOUGLAS COUNTY DEPARTMENT OF PUBLIC WORKS

Date: 5-22-2008 By: JC INDEX NO: this survey consists of: Map: Narrative: Corner Rpt: C.S. 65/63-19

RESTORED CORNER

DOUGLAS COUNTY SURVEYOR

CORNER E 1/16 Sections 8/17, T21S, R5W, W.M.

EVIDENCE 3/4" x 3/4" "T" Post w/ 1" Brass Plate "HAINES 236" .4' above grade (239)

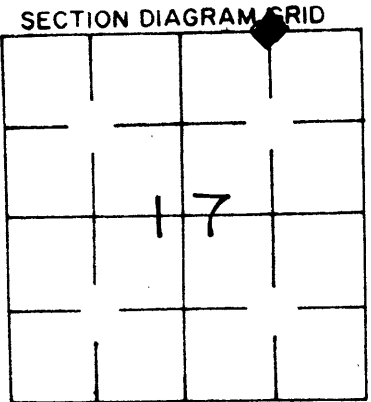
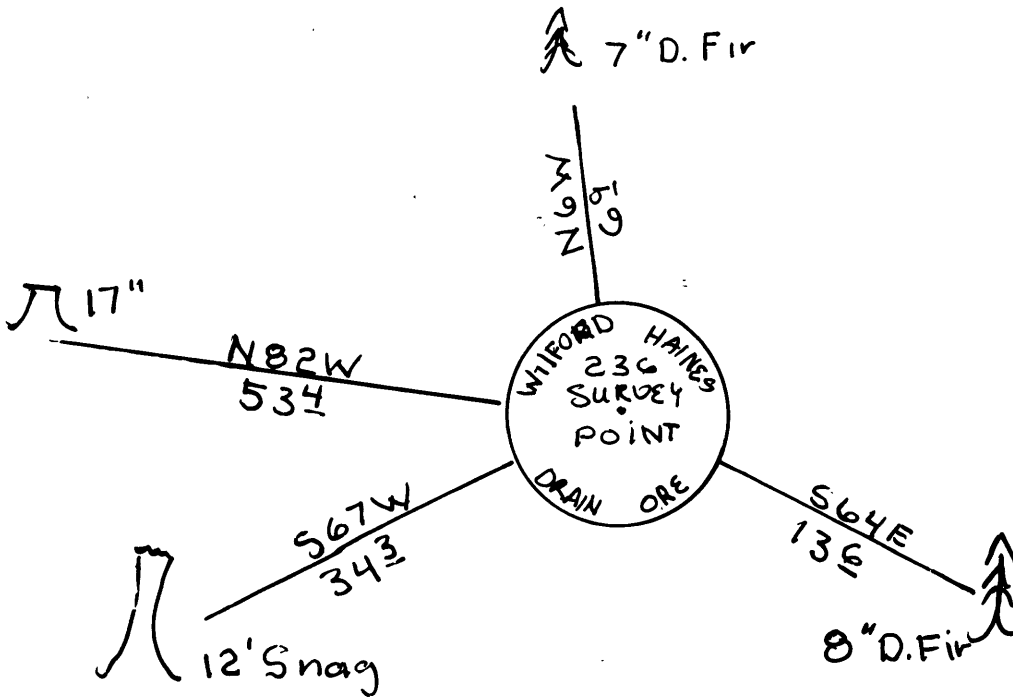
ACCESSORIES 17" D. Fir, N82W, 534, No Face Visible, 2' stump 15" D. Fir, S67W, 343, No Face Visible, 0" SNAG 7" D. Fir, N6W, 6.9', BLAZED + SCRIBED "E 1/16 S8BT" 8" D. Fir, S64E, 136, "E 1/16 S17BT"

NOTES AND OTHER INFORMATION Set 5' Steel Post 2' East

ALL DISTANCES TO SIDECENTER (SPIKE) OF NEW BT'S

BY: Harvey Christensen FIRM: NW Timberland Consulting TITLE: President DATE: 9/2000

SKETCH N.T.S.



C.S. File No 65/63-19