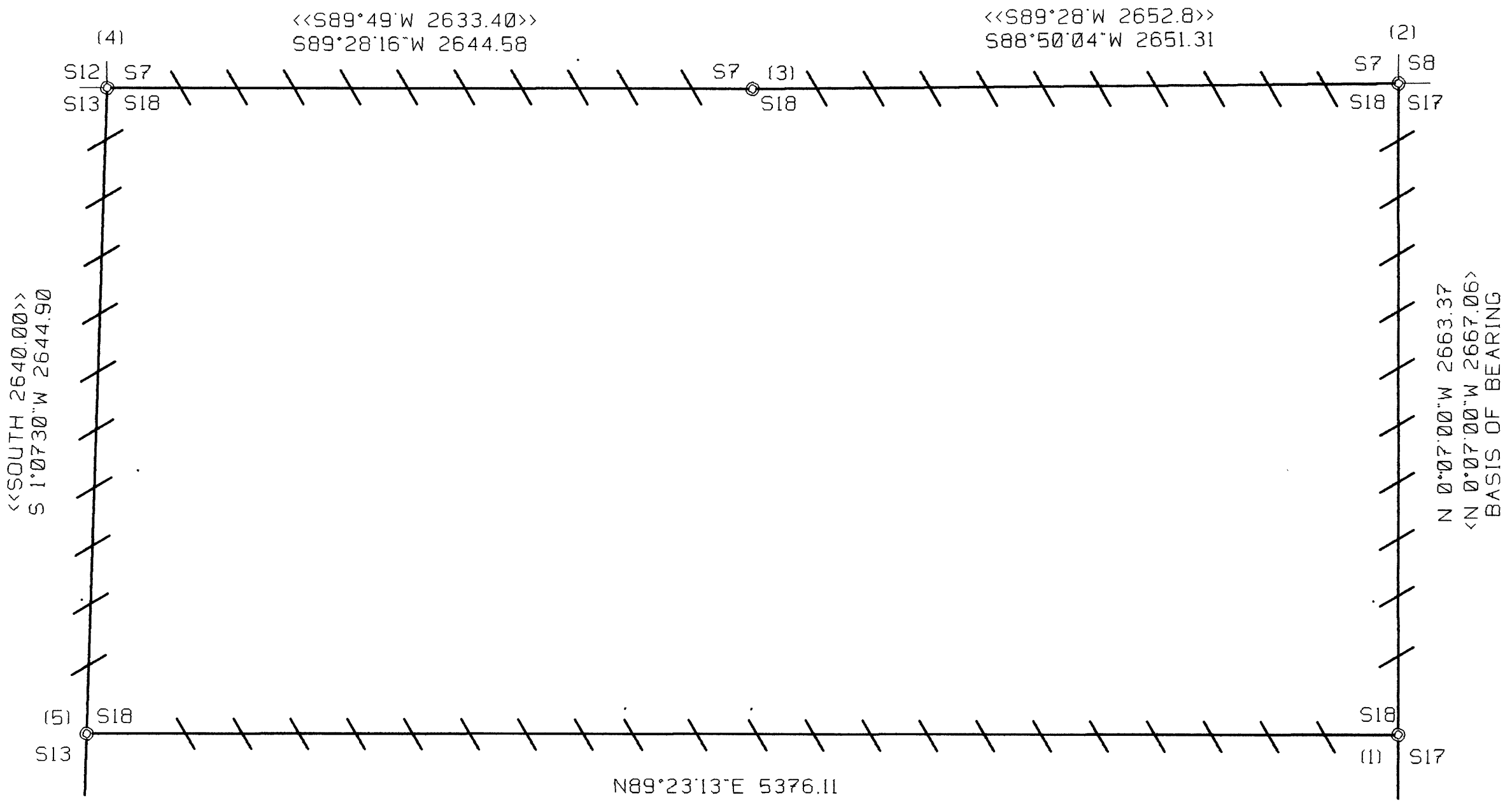


# CORNER RENEWAL MAP

SECTION 18, TOWNSHIP 23 SOUTH, RANGE 4 WEST, W.M.  
 DOUGLAS COUNTY, OREGON FEB. 2008 SCALE: 1" = 500'  
 SURVEYED BY LONE ROCK TIMBER MANAGEMENT CO.  
 P. O. BOX 1127 ROSEBURG, OREGON 97410

FILED  
 Date: 2/19/2008 By: JC  
 This survey consists of:  
 Map:  
 Narrative:  
 Corner Rpt: 65163-8  
 DOUGLAS COUNTY  
 SURVEYOR

C.S. File No 65163-8



### NARRATIVE

THIS SURVEY WAS CONDUCTED TO MARK PROPERTY LINES BETWEEN EXISTING FOUND GOVERNMENT CORNERS. WE INITIATED THIS SURVEY AT THE EAST 1/4 AND RAN A RANDOM TRAVERSE AROUND THE NORTH 1/2 OF SECTION 18 TYING IN THE CORNERS AS SHOWN ON THIS MAP. WE BLAZED, PAINTED, RIBBONED AND TAGGED THE TRUE LINE BETWEEN CORNERS AS SHOWN. THIS SURVEY WAS DONE IN 1996 WITH THE LINES AND CORNERS RENEWED IN 2008.

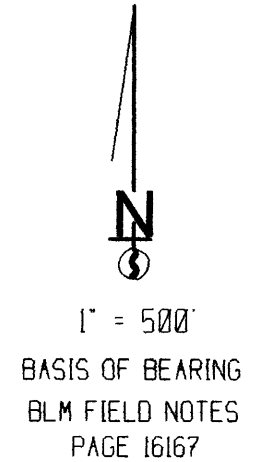
### CORNER INFORMATION

- THE FOLLOWING IS A RECORD OF ALL CORNERS FOUND DURING THE COURSE OF THIS SURVEY.
- 1) EAST 1/4 CORNER SECTION 18  
 FOUND BLM BRASS CAP SET 1976 BY PROPORTION.  
 -- 23" CEDAR BEARS N22 1/4"E, 39.1 FEET (RECORD N22 1/4"E, 38.9 FEET), WELL HEALED FACE WE RETAG  
 -- 20" DOUGLAS FIR BEARS N40°W, 32.7 FEET (RECORD N40 1/2"W, 32.67 FEET)  
 CORNER LIES ON NORTHEAST SLOPE WITH BLM CLEARCUT TO EAST FLAT BENCH APPROXIMATELY 120 FEET TO THE NORTHEAST.
  - 2) NORTHEAST SECTIONS CORNER OF SECTION 18  
 FOUND BLM BRASS CAP SET IN 1959 FROM ORIGINAL EVIDENCE.  
 -- NEW 12" DOUGLAS FIR BEARS S25°E 21.2 FEET VISIBLE SCRIBING AND 8/07 DATED BLM TAG  
 -- 20" DOUGLAS FIR SLOPED STUMP BEARS S66 1/2"W 69.9 FEET (RECORD S66 3/4"W, 70.3 FEET), WELL HEALED FACE  
 -- 23" DOUGLAS FIR BEARS N70 1/4"W, 20.7 FEET (RECORD N68°W, 21.0 FEET), WELL HEALED FACE AND BLM TAG  
 -- 72" DOUGLAS FIR BEARS S37°E, 59.2 FEET (RECORD S36°E, 60.72 FEET), WELL HEALED FACE AND BLM TAG  
 -- 24" DOUGLAS FIR BEARS N21°E, 72.1 FEET (RECORD N23°E, 72.3 FEET), WELL HEALED FACE AND BLM TAG  
 FOUND BRASS CAP 1.2 FEET ABOVE GROUND IN PILE OF ROCKS. A FENCE CORNER IS 90 FEET SOUTH OF BRASS CAP.
  - 3) NORTH 1/4 CORNER SECTION 18  
 FOUND DOUGLAS COUNTY SURVEYORS BRASS CAP SET 1959 FROM ORIGINAL EVIDENCE.  
 -- 45" DOUGLAS FIR STUMP BEARS S67°W, 10.8 FEET (RECORD S66°W, 10.56 FEET), CHOPPED OUT FACE AND COUNTY TAG  
 -- 54" DOUGLAS FIR STUMP ROTTEN BEARS N35 1/2"W, 81.9 FEET (RECORD N35°W, 79.2 FEET), NO VISIBLE SCAR, COUNTY TAG  
 -- NEW 13" DOUGLAS FIR BEARS S65°E 28.5 FEET VISIBLE SCRIBING NOT PAINTED NO TAG NO RECORD  
 -- 26" DOUGLAS FIR BEARS N13°W, 137.95 FEET (RECORD N11°W, 138.6 FEET), WELL HEALED FACE AND COUNTY TAG  
 -- 26" DOUGLAS FIR BEARS N1°W, 25.9 FEET (RECORD NORTH 25.7 FEET, WELL HEALED FACE AND COUNTY TAG  
 -- 29" DOUGLAS FIR STUMP BEARS S28 1/2"E, 26.8 FEET AS PER RECORD WELL HEALED FACE AND TAG  
 CORNER IS 1.0 FEET ABOVE GROUND IN EAST-WEST FENCE LINE.
  - 4) NORTHWEST SECTION CORNER OF SECTION 18  
 FOUND DOUGLAS COUNTY SURVEYORS BRASS CAP SET IN 1979 FROM ORIGINAL EVIDENCE.  
 -- 12" CEDAR SNAG BEARS N80 1/2"W, 33.0 FEET (RECORD N78 1/2"W, 32.7 FEET), SCRIBING VISIBLE AND COUNTY TAG  
 -- 30" DOUGLAS FIR STUMP BEARS N69 1/4"W, 26.9 FEET (RECORD N65°W, 27.1 FEET), CHOPPED OUT FACE WITH SCRIBING VISIBLE AND COUNTY TAG  
 -- 25" GRAND FIR BEARS N34 1/4"W, 42/2 FEET (RECORD N33°W, 42.3 FEET), WELL HEALED FACE AND COUNTY TAG  
 -- 24" DOUGLAS FIR STUMP BEARS N19 1/2"E, 16.7 FEET (RECORD N20°E, 16.5 FEET), CHOPPED OUT FACE AND COUNTY TAG  
 -- 25" WHITE FIR BEARS S22 1/2"W, 50.4 FEET (RECORD S24°W, 50.3 FEET)  
 -- 9" PONDEROSA PINE BEARS N33 3/4"E, 13.4 FEET (TAG SAYS N34°E, 13.5 FEET), WELL HEALED FACE AND B.T. TAG  
 CORNER LIES ON 45% WESTERLY SLOPE AT CORNER OF FALLEN DOWN FENCE.
  - 5) WEST 1/4 CORNER SECTION 18  
 FOUND DOUGLAS COUNTY SURVEYORS BRASS CAP SET IN 1959 FROM ORIGINAL EVIDENCE 1.0 FEET ABOVE GROUND.  
 -- 19" WHITE FIR BEARS S88 3/4"W, 35.6 FEET (TAG SAYS S82°E, 53 LKS 34.98 FEET), WELL HEALED FACE, BLM TAG  
 -- 54" DOUGLAS FIR SNAG BEARS N53 1/2"W, 25.4 FEET (RECORD N50°W, 24.42 FEET), CHOPPED OUT FACE WITH SCRIBING VISIBLE AND BLM TAG TREE NOW DOWN AND AGAINST CORNER  
 -- 21" DOUGLAS FIR BEARS N16 1/2"E, 30.4 FEET (TAG SAYS S22°W, 47 LKS 31.02 FEET), WELL HEALED SCAR AND TAG  
 CORNER LIES APPROX. 50 FEET SOUTH OF CREEK AND IN WANDERING NORTH - SOUTH FENCELINE.  
 FENCE CORNER APPROX. 10.5 FEET NORTH OF CORNER.

### LEGEND:

- ⊙ - FOUND MONUMENT
- / — - LINES FLAGGED, BLAZED, PAINTED & TAGGED
- < > - BLM FIELD NOTES LOCATED IN DOUGLAS COUNTY SURVEYORS OFFICE PAGE 16167
- << >> - GLO FIELD NOTES LOCATED IN DOUGLAS COUNTY SURVEYORS OFFICE PAGES 2313 - 2315, 2330, AND 2333.

REGISTERED  
 PROFESSIONAL  
 LAND SURVEYOR  
*Ken W. Hoffine*  
 OREGON  
 JULY 16, 1987  
 KEN W. HOFFINE  
 2291  
 EXPIRES 6-30-09



C.S. File No 65163-8