

FILED

OREGON CORNER RESTORATION FORM

Date: 12/10/2007 By: JC

Section 26 Township 22 S. Range 7 W.

This survey consists of:

County Douglas Date 12/5/07

Map: _____

Narrative: _____

Corner Rpt: 65/60-54

DOUGLAS COUNTY
SURVEYOR

Corner Designation



- _____ Condition Report Only
- _____ Not Found
- Renewed
- _____ Unrecorded
- _____ Surveyed In
- _____ Referenced Out

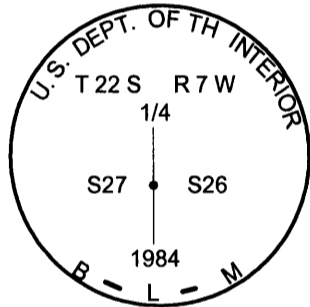
Previous Renewals/Surveys, etc.

HAINES 1957 MAP 1-59 AND BLM 1984 FIELD NOTES VOL. 47 PAGES 18076 - 77

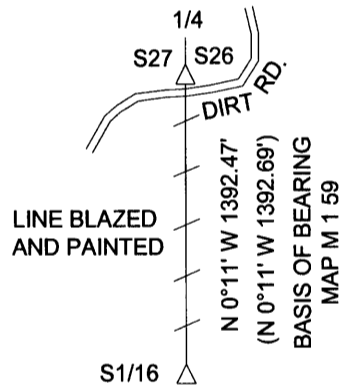
Monument(s) & Accessories Found: (Condition and Source)

58" DOUGLAS FIR BEARS N73 1/4°W 102.0 FEET (RECORD N73°W 102.96 FEET 156 LKS) HEALED FACE AND TAG

Monument Detail



Sketch



Monument Set (Procedures and Description)

New Accessories

19" DOUGLAS FIR BEARS S23 1/4°W 45.9 FEET WE SCRIBE 1/4 S27 BT AND TAG

21" DOUGLAS FIR BEARS N53 1/2°W 22.3 FEET WE SCRIBE 1/4 S27 BT AND TAG

Location & Comments

CORNER LIES ON NORTH
SIDE OF DIRT ROAD
BLM TIMBER TO WEST
AND REPROD TO EAST

Compass Bearing _____
 Firm/Agency Lone Rock Timber Co.
 Address P. O. Box 1127
Roseburg, Ore. 97470
 Party Chief KEN W. HOFFINE
 Notes GARY ANGIOLET
 Witness IGNACIO ROMAN

REGISTERED
 PROFESSIONAL
 LAND SURVEYOR

Ken W Hoffine
 OREGON
 JULY 16, 1987
 KEN W. HOFFINE
 PLS 2291

EXPIRES 6-30-09

C.S. File No 65/60-54