

**CERTIFIED RECORD OF LAND CORNER MONUMENTATION**

**History of original corner establishment:**

GLO Survey by Fred Mensch, Deputy Surveyor, under Special Instructions for Group No. 14, dated August 20, 1912: (DCSO records page 8444)  
Set a granite stone, 15x8x5 ins., 10 ins. In the ground, for 1/4 sec. cor., marked 1/4 on N. face; from which:  
A fir, 12 ins. diam., bears N.33°E., 4 lks. dist., marked 1/4 S20 BT.  
A fir, 18 ins. diam., bears S.57°W., 29 lks. dist., marked 1/4 S29 BT.

**DIAGRAM**

T 32 S R 3 W  
1 S 20  
4 S 29

**GCDB 240300**

-----  
Douglas County Surveyor's Office, John M. Powell, Frank Jones and W. Penley, July, 1969 C.S. File No. 54/91:  
Found , 15x8x5 Stone, firmly set, mkd.: "1/4" on north face.  
Orig. 18", now 24" D.fir, S.57°W., 19.1 ft., shows scar. No trace of N.E. BT., logged unit  
Set - Brass Cap at Cor. Mkd: "COUNTY SURVEYORS OFFICE T32S R3W 1/4 S20/S29 1969"  
New BT: 7" Yew N.3°W., 39.7 ft. mkd: "1/4 S20 CS BT".  
Reblzd. & Rescrbd: 24" D.Fir , S.57°W., 19.1 ft. mkd: "1/4 S29 CS BT".

**Description of corner evidence found:**

A 1 1/2" dia. Galvanized iron post, firmly set, projected 16" above the ground with a 2 1/2" dia. brass cap stamped:  
COUNTY SURVEYORS OFFICE  
T 32 S R 3 W  
1 S 20  
4 S 29  
1969

From which an original bearing tree:

A 31" D. fir snag bears S.57°W., 19.1 ft. with a healed blaze.

And bearing trees by Powell in 1969:

A 11" Yew bears N.3°W., 39.7 ft. with scribe marks "0 CS BT" visible on a partially healed blaze. (Rec. N.3°W.)

**Description of monument and accessories established to perpetuate the original location of this corner:**

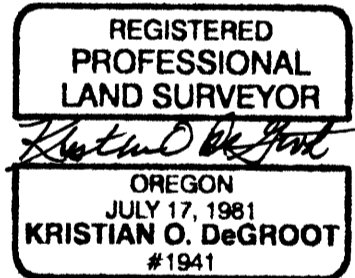
I scribed a new bearing tree:

A 9" D. fir bears S.54°E., 12.3 ft. scribed "1/4 S29 BT".

All new bearing trees have double blazed faces with a brass washer stamped "PLS 1941" nailed into the lower blaze. Bearings are taken to the center of the tree at the root crown and distances are measured to an aluminum nail in the root crown at the side and center of the tree. All bearing trees have a 6" red band painted around the tree and the blazed face painted red and Bearing Tree and USFS Land Survey Monument sign nailed to the tree.

Corner renewal date: August 20, 2007  
Party Chief: Lester Fanning, PLS 2664  
Witnesses: Tony Bellando, Sam Clayton  
Warren Knight Staff Compass -- declination 18°E

By: BTS Engineering & Surveying, Inc.  
431 SE Main  
Roseburg, OR 97470



RENEWAL 12/31/07

**FILED**

Date: 11-7-2007 By: JC

This survey consists of:

Mpd: \_\_\_\_\_

Number: \_\_\_\_\_

Corner Rpt: 65/60-49

DOUGLAS COUNTY  
SURVEYOR

Douglas County Surveyor's Office Douglas County, Oregon  
I hereby certify that the written instrument was filed in this office for record on the 7 day of NOVEMBER, 2007.

Romey Ware by [Signature]  
(County Official) (Deputy)

C.S. File No 65/60-49