

FILED

Date: 4-23-2007 By: JC

This survey consists of:

Map: ~~10~~

Ne. 1/4 Sec:

Corner Rpt: 65/60-28

OREGON CORNER RESTORATION FORM

Section 26 Township 25 S

Range 4 W

County DOUGLAS

Date 2/8/2007 DOUGLAS COUNTY SURVEYOR

Corner Designation

1/4 Between Sections 23 & 26

- Condition Report Only
- Not Found
- Renewed
- Unrecorded
- Surveyed In
- Referenced Out

Previous Renewals/Surveys, etc. Zirpel, Corbin & Rosenberry 1958 (DSCO Records v29, p 12282-83) Bishop And Rogers 1983 (DSCO Records, V 46 P 17766)

Monument(s) & Accessories Found: (Condition and Source)

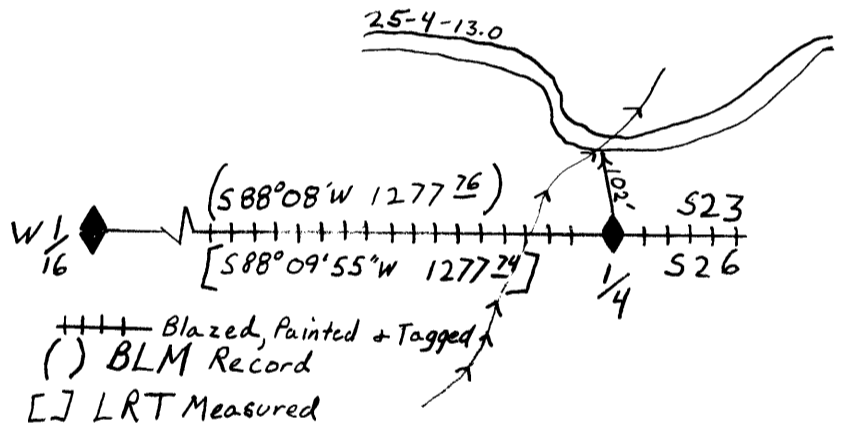
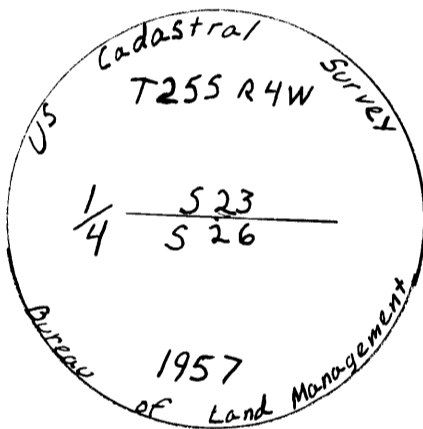
Found 1957 BLM Brass Cap

Found 13" Grand Fir Bears N23°W, 27.74 feet (Record N23°W, 41 lks)

Found 19" Cedar Bears S14°W, 26.45 feet (Record S14°W, 40 lks)

Monument Detail

Sketch



++++ Blazed, Painted + Tagged
 () BLM Record
 [] LRT Measured

Monument Set (Procedures and Description)

N/A

New Accessories

N/A

Location & Comments

Surveyor's Seal

Found BLM Brass Cap in good 0.6 feet above ground.	Basis of Bearing	GPS
Located on NW slope 102. feet N20°W, above BLM gravel	Firm/Agency	Lone Rock Timber Management Company
Road #25-4-13.0	Address	Po Box 1127 Roseburg, OR 97470
	Party Chief	Ken Hoffine
	Notes	Jason Moon
	Witness	Ignacio Roman

REGISTERED PROFESSIONAL LAND SURVEYOR

Ken W Hoffine
 OREGON JULY 18, 1987
 KEN W. HOFFINE
 2291

Expires 6-30-07

C.S. File No 65/60-28