

FIELD

Date: 4-23-07 By: JC

Supervisor/County of:

Mon: _____

Map: _____

Corner: 65/60-24

OREGON CORNER RESTORATION FORM

Section 23 Township 25 S

Range 4 W

County DOUGLAS

Date 2/8/2007

**DOUGLAS COUNTY
SURVEYOR**

Corner Designation

1/4 Between Section 23 and Section 24

- Condition Report Only
- Not Found
- Renewed
- Unrecorded
- Surveyed In
- Referenced Out

Previous Renewals/Surveys, etc. BLM dependent resurvey- Bishop and Rogers
(1983 DSCO Records V46, P17763-64)

Monument(s) & Accessories Found: (Condition and Source)

Found 1956 Douglas County Brass Cap

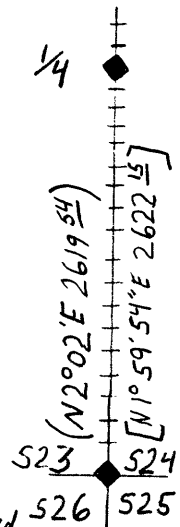
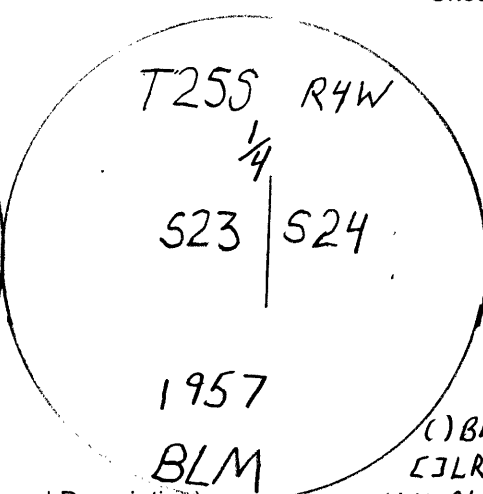
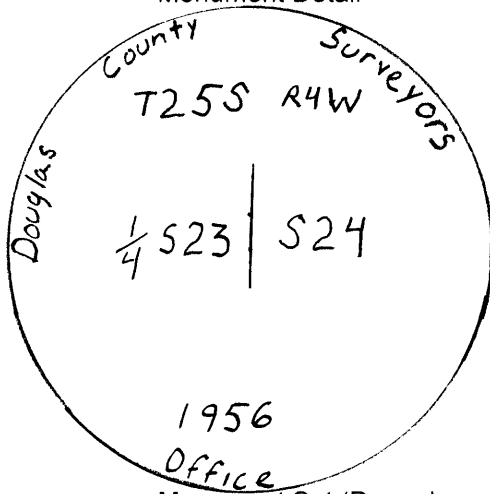
Found 1957 BLM Brass Cap 0.23 feet from DSCO Brass Cap

Found 38" Cedar Bears S56°W 27.9 feet (Record S49 1/2°W 45 lks)

Found 15" Douglas Fir Bears N72°E 21.0 feet (Record N68 1/2°E, 33 lks)

Monument Detail

Sketch



Monument Set (Procedures and Description)
N/A

(1) BLM Record
LJLRT Measured
+++ Blazed, Painted + tagged

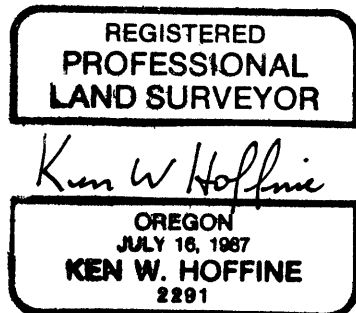
New Accessories
N/A

Location & Comments

Surveyor's Seal

Brass Caps were found in fair condition leaning towards the NW at approximately 5°

Basis of Bearing GPS
 Firm/Agency Lone Rock Timber Management Company
 Address Po Box 1127 Roseburg, OR 97470
 Party Chief Ken Hoffine
 Notes Jason Moon
 Witness Ignacio Roman



Expires 6-30-07

C.S. file no 65/60-24