

FILED

Date: 4-23-07 By: X

This survey consists of:

Map: \_\_\_\_\_

Narrative: \_\_\_\_\_

Corner Rpt: 65/60-25

**OREGON CORNER RESTORATION FORM**

Section 26 Township 25 S Range 4 W

County DOUGLAS Date 2/8/2007

**DOUGLAS COUNTY  
SURVEYOR**

Corner Designation

W1/16 Between Section 23 and Section 26

- Condition Report Only
- Not Found
- Renewed
- Unrecorded
- Surveyed In
- Referenced Out

Previous Renewals/Surveys, etc. Bishop and Rogers 1983 (DSCO Records v46, p 17767)

Monument(s) & Accessories Found: (Condition and Source)

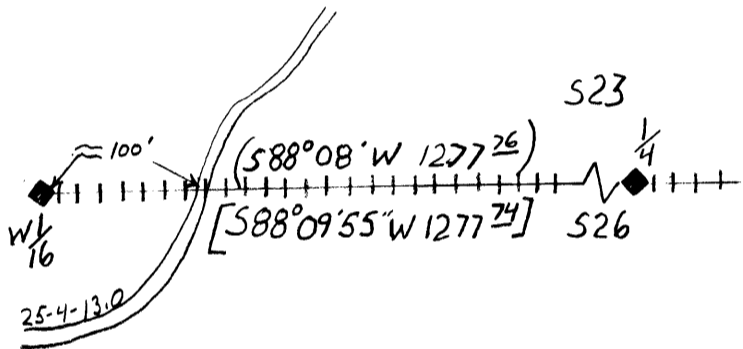
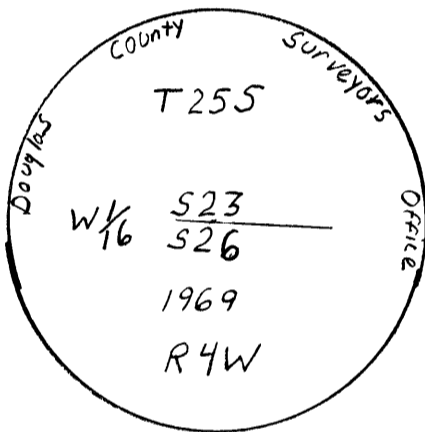
Found 1969 Douglas County Brass Cap in good condition

Found 13" Madrone Bears N86°E 57.4 feet (Record N86°E 88 lks.)

Found 15" Double stem Madrone Bears S45°W 35.4 feet (Record S45°W 53 1/2 lks)

Monument Detail

Sketch



++++ Blazed, Painted and Tagged  
( ) BLM Record  
[ ] LRT Measured

Monument Set (Procedures and Description)

N/A

New Accessories

N/A

Location & Comments

Surveyor's Seal

Found DSCO Brass	Basis of Bearing	GPS
Cap on a West facing	Firm/Agency	Lone Rock Timber
slope 0.8 feet above	Management Company	
ground. Corner lies	Address	Po Box 1127
approximately 100'	Roseburg, OR	97470
West of BLM Road	Party Chief	Ken Hoffine
#25-4-13.0	Notes	Jason Moon
	Witness	Ignacio Roman

REGISTERED  
PROFESSIONAL  
LAND SURVEYOR

*Ken W Hoffine*

OREGON  
JULY 18, 1987  
KEN W. HOFFINE  
2291

Expires 6-30-07

C.S. file no 65/60-25