

FILED

Date: 3/12/2007 By: JK

This survey consists of:

Map: _____

Narrative: _____

Corner Rpt: 65/60-12

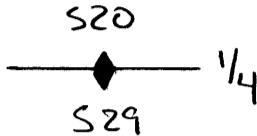
OREGON CORNER RESTORATION FORM

Section 20 Township 25S Range 4W

County Douglas Date 02/16/07

DOUGLAS COUNTY
SURVEYOR

Corner Designation



- Condition Report Only
- Not Found
- Renewed
- Unrecorded
- Surveyed In
- Referenced Out

Previous Renewals/Surveys, etc.

1957 BLM field notes and Haines Map M2-14

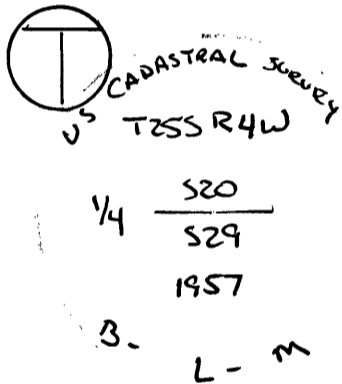
Monument(s) & Accessories Found: (Condition and Source)

Found 1975 BLM brass cap with Haines T-iron alongside

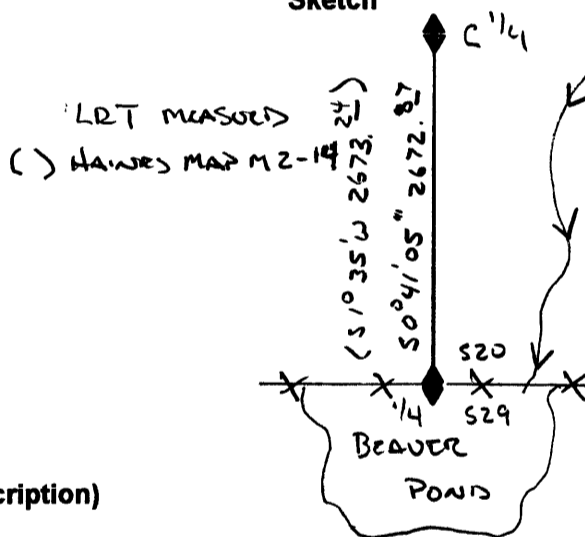
-- 28" Douglas Fir bears N75½°W, 72' feet (Record N75°W, 71.94 feet)

-- 23" Ash has been fell by beaver and in down and out of position

Monument Detail



Sketch



Monument Set (Procedures and Description)

New Accessories

17" Douglas Fir bears N72½°E, 46.20 feet, we scribe 1/4 S20 B.T. and tag

14" Douglas Fir bears N4¼°W, 28.9 feet, we scribe 1/4 S20 B.T. and tag

Location & Comments

Corner lies in fence lines at North end of large beaver pond

Basis of Bearing GPS
Firm/Agency Lone Rock Timber

Address PO Box 1127
Roseburg, Oregon 97470

Party Chief Ken Hoffine

Notes Gary Angiolet

Witness Ignacio Roman

Surveyor's Seal

REGISTERED
PROFESSIONAL
LAND SURVEYOR

Ken W Hoffine

OREGON
JULY 16, 1887
KEN W. HOFFINE
2291

Expires 6-30-07

C.S. File No 65/60-12