

FILED

Date: 3/12/2007 By: X

This survey consists of:

Map: _____

Narrative: _____

Corner Rpt: 65/60-11

OREGON CORNER RESTORATION FORM

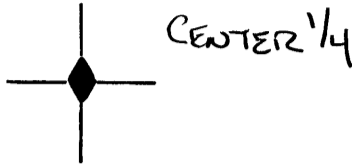
Section 20 Township 25S Range 4W

County Douglas Date 02/19/07

DOUGLAS COUNTY SURVEYOR

Corner Designation

- Condition Report Only
- Not Found
- Renewed
- Unrecorded
- Surveyed In
- Referenced Out



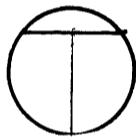
Previous Renewals/Surveys, etc. Haines Map M2-14

Monument(s) & Accessories Found: (Condition and Source)

Found Haines T-iron with washer 0.2 feet above ground
- 20" Cedar bears S88 3/4°W, 16.0 feet (record West 16.5 feet) healed face

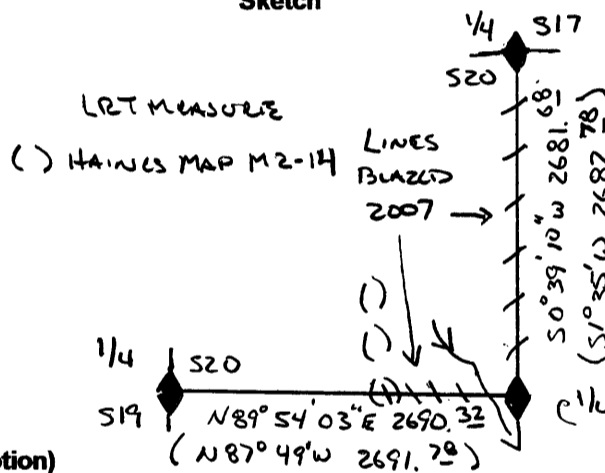
Monument Detail

HAINES T-IRON



WITH WASHER

Sketch



Monument Set (Procedures and Description)

New Accessories

18" Douglas fir bears S10 3/4°W, 17.3 feet, we scribe C1/4 S20 B.T. and tag
11" Douglas fir bears S58 1/4°E, 11.3 feet, we scribe C1/4 S20 B.T. and tag
12" Douglas fir bears S25 3/4°E, 17.1 feet, we scribe C1/4 S20 B.T. and tag

Location & Comments

Corner lies in timber on Southwest slope approximately 30' East of draw

Basis of Bearing GPS
Firm/Agency Lone Rock Timber
Address PO Box 1127
Roseburg, Oregon 97470
Party Chief Ken Hoffine
Notes Gary Angiolet
Witness Ignacio Roman

Surveyor's Seal

