

FILED

# OREGON CORNER RESTORATION FORM

Date: 3-16-06 By: sc  
This survey consists of:  
Map: M 150-3  
Name: \_\_\_\_\_  
Corner Rpt: 65/58-2B

Section: 24 Township: 30S Range: 8W

County: Douglas Date: 3-9-06

### Corner Designation

1/4  $\frac{S13}{S24}$

- Condition Report Only
  - Not Found
  - Renewed
  - Unrecorded
  - Surveyed In
  - Referenced Out
- DOUGLAS COUNTY SURVEYOR**

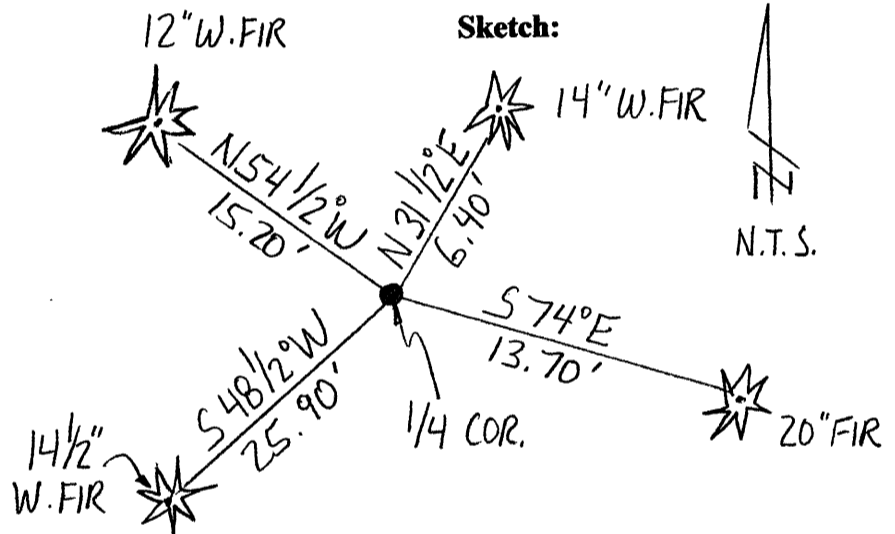
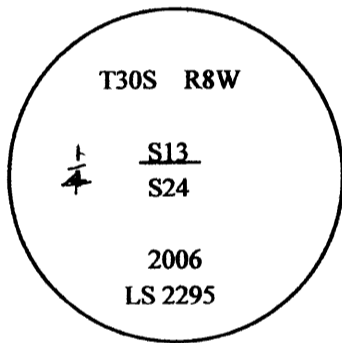
### Previous Renewals / Surveys, etc.:

Original corner set by W.H. Byars in 1882.

### Monument (s) & Accessories Found: (Condition & Source)

A thorough search was made for the original corner. It was not found.

### Monument Detail:



### Monument Set (Procedures and Description)

Set 5/8" x 36" iron rod with 2 1/2" aluminum cap marked as shown above. Corner was set by proportionate Measurement according to the distances given in the original 1882 survey.

### New Accessories

- A 20" Fir bears S 74°E 13.70 feet scribed "1/4 S24 BT"
- A 14 1/2" W. Fir bears S48 1/2°W 25.90 feet scribed "1/4 S24 BT"
- A 12" W. Fir bears N54 1/2°W 15.20 feet scribed "1/4 S13 BT"
- A 14" W. Fir bears N31 1/2°E 6.40 feet scribed "1/4 S13 BT"

NOTE: (we set spikes in the base of all new bearing trees for measuring distances to the corner; bearings to the trees were measured with a total station & are based on the 1882 GLO Survey by Byars.

### Location & Comments

Corner lies on a gentle west-erly slope and about 450' east-erly of a gravel road.

Compass Declination: N/A

### Firm/Agency:

Gregory D. Lang, Surveyor  
Address: 7550 Willis Cr. Rd.  
Winston, Oregon 97496  
Party Chief: Gregory Lang  
Notes: Same  
Witness: Trevor Lang

### Surveyor's Seal



EXP 12-31-06

C.S. File No 65/58-2B