

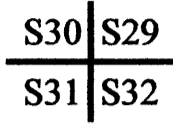
OREGON CORNER RESTORATION FORM

Section: 31 **Township:** 30S **Range:** 6W

County: Douglas **Date:** 5-16-06

FILED
 Date: 5/22/06 By: X
 This survey consists of:
 Map: M 150-53
 Narrative:
 Corner Rpt: 65/58-17A-D

Corner Designation



- DOUGLAS COUNTY SURVEYOR
- Condition Report Only
 - Not Found
 - Renewed
 - Unrecorded
 - Surveyed In
 - Referenced Out

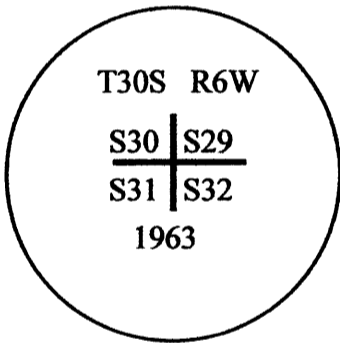
Previous Renewals / Surveys, etc.:

The original corner was established by Addison Flint in 1855. Cole set a rock from the original evidence in 1924. The County Surveyor's office found the corner as renewed by Cole and set a brass cap alongside the corner stone in 1963. Several private surveyors have since used this corner.

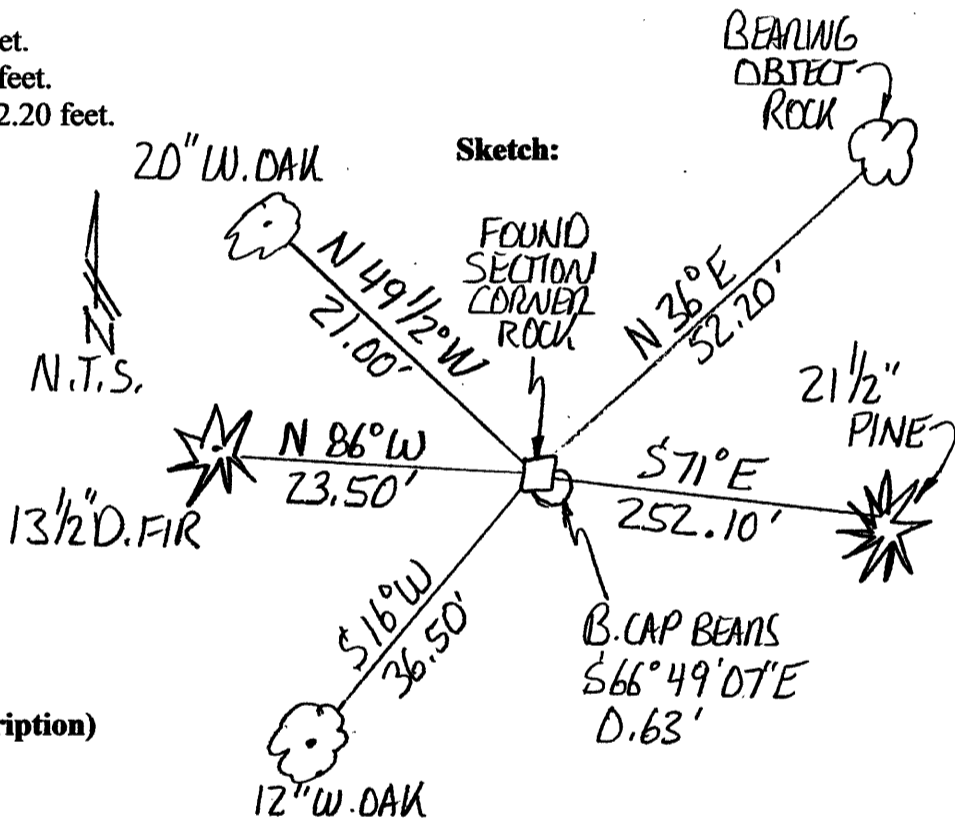
Monument (s) & Accessories Found: (Condition & Source)

- Found the corner stone and a brass cap which bears S66°49'07"E 0.63 feet.
- A 12" W.Oak bears S16°W 36.50 feet.
- A 13 1/2" D.Fir bears N86°W 23.50 feet.
- A 20" W.Oak bears N49 1/2°W 21.00 feet.
- A rock (bearing object) bears N36°E 52.20 feet.

Monument Detail:



Sketch:



Monument Set (Procedures and Description)

N/A

New Accessories

A 21 1/2" Pine bears S71°E 252.10 feet scribed "T30S R6W S32 BT"

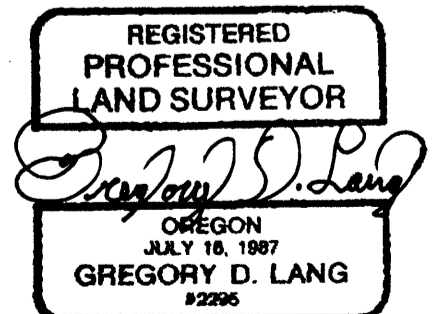
NOTE: There are spikes in the base of all bearing trees for measuring distances to the corner; bearings to the trees were measured with a total station & are based on the original survey line between Sections 31 & 32.

Location & Comments

Corner lies West of a small creek at the base of an easterly slope.

Compass Declination: N/A
Firm/Agency:
 Gregory D. Lang, Surveyor
Address: 7550 Willis Cr. Rd.
 Winston, Oregon 97496
Party Chief: Greg Lang
Notes: Same
Witness: Trevor Lang

Surveyor's Seal



EXPIRES 12-31-06

C.S. File No 65/58-17B