

OREGON CORNER RESTORATION FORM

Section: 31 Township: 30S Range: 6W

County: Douglas Date: 5-16-06

FILED

Date: 5/22/2006 By: JL

This survey consists of:

Map: U150-53

Narrative: _____

Corner Rpt: 65/58-17A-D

DOUGLAS COUNTY
SURVEYOR

Corner Designation

1/4 S31 | S32

- Condition Report Only
- Not Found
- Renewed
- Unrecorded
- Surveyed In
- Referenced Out

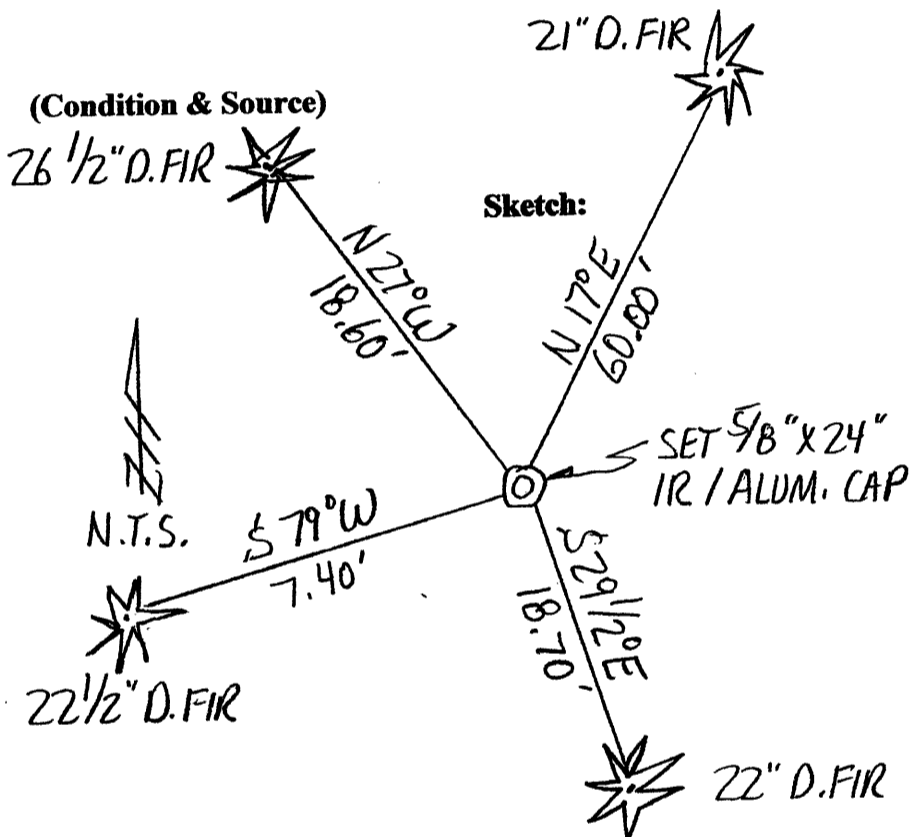
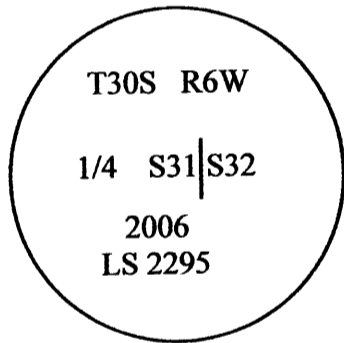
Previous Renewals / Surveys, etc.:

Original corner 1/4 corner was not established due to a rock bluff. Apparently, it was not set at any subsequent time.

Monument (s) & Accessories Found: (Condition & Source)

None

Monument Detail:



Monument Set (Procedures and Description)

Set a 5/8" x 24" iron rod with aluminum Roseburg Resources cap. Iron rod was shorter than 36" standard due to shallow rock.

New Accessories

- 21" D.Fir bears N 17° E 60.00 feet scribed "1/4 S32 BT"
- 26 1/2" D.Fir bears N 27° W 18.60 feet scribed "1/4 S31 BT"
- 22 1/2" D.Fir bears S 79° W 7.40 feet scribed "1/4 S31 BT"
- 22" D.Fir bears S 29 1/2° E 18.70 feet scribed "1/4 S32 BT"

NOTE: We set spikes in the base of all bearing trees for measuring distances to the corner; bearings to the trees were measured with a total station & are based on the original survey line between the Section corners.

Location & Comments

Corner lies on a northerly slope below a very large rock. It is approximately 200' South of Cow Creek.

Compass Declination: N/A

Firm/Agency:

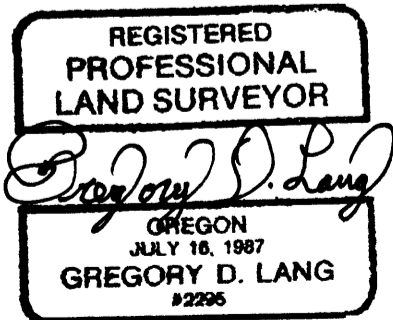
Gregory D. Lang, Surveyor
Address: 7550 Willis Cr. Rd.
Winston, Oregon 97496

Party Chief: Greg Lang

Notes: Same

Witness: Trevor Lang

Surveyor's Seal



EXPIRES 12-31-06

C.S. File No 65/58-17A