

FILED

Date: 4-18-2006 By: JC

This survey consists of:

Map: \_\_\_\_\_

Narrative: \_\_\_\_\_

Corner Rpt: 65/58-16

OREGON CORNER RESTORATION FORM

Section 25 Township 22S Range 8W

County DOUGLAS Date 4/17/06

DOUGLAS COUNTY  
SURVEYOR

Corner Designation

S23	S24
S26	S25

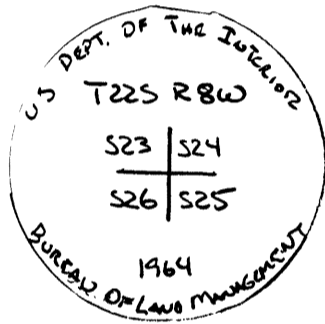
- Condition Report Only
- Not Found
- Renewed
- Unrecorded
- Surveyed In
- Referenced Out

Previous Renewals/Surveys, etc. MAP M 114-47 - BLM 1963/1965  
BLM SURVEY PAGE 13683

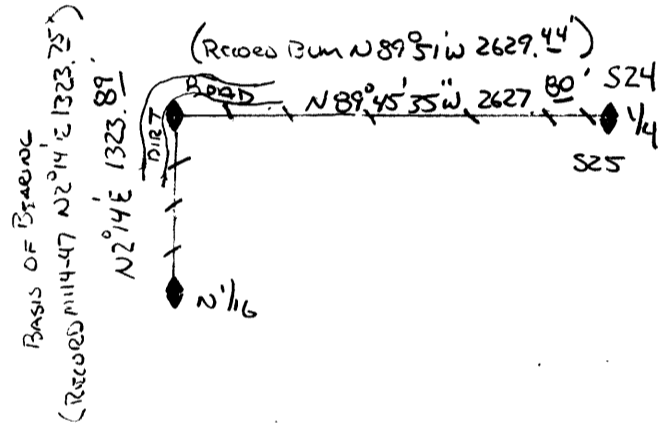
Monument(s) & Accessories Found: (Condition and Source)

WE FOUND 1964 BLM BRASS CAP ON 28" IRON PIPE BURIED OUT OF GROUND AND LAYING  
ON EDGE OF DIRT SKID ROAD. WE RESET CORNER FROM REMAINING BEARING  
TREES AND TRAVERSE TO N 1/16 AND NORTH 1/4 CORNER AS CHECKS.  
-- 45" DOUGLAS FIR STUMP N56 1/2° W 12.0 AS PER RECORD  
-- 48" WHITE FIR STUMP S19 1/4° W 100.8 FT. (RECORD S20° W 101.9 FT.)  
-- 17" DOUGLAS FIR S12 3/4° E 116.2 FT. (RECORD S13° E 116.5 FT.)

Monument Detail



Sketch



Monument Set (Procedures and Description)

\_\_\_\_\_  
 \_\_\_\_\_  
 \_\_\_\_\_

New Accessories

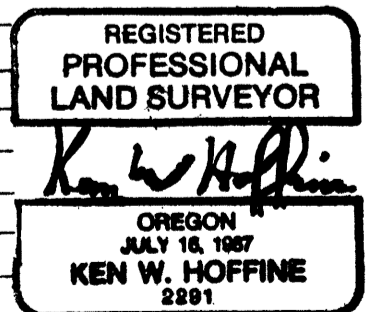
SET 5/8" x 40" IRON ROD WITH YELLOW PLASTIC CAP MARKED LOWE ROCK  
TIMBER PLS 2291 0.3 FT ABOVE GROUND BEARS N29 1/4° E 84.5 FEET

Location & Comments

CORNER LIES ON SOUTH  
EDGE OF DIRT SKID ROAD  
AT GROUND LEVEL. PUT  
METAL FLANGE POST 0.3  
FEET WEST OF CORNER.  
LINE RUNNING EAST AND  
SOUTH WERE BLAZED AND  
PAINTED

Compass Declination 19 1/2  
 Firm/Agency LOWE ROCK  
TIMBER COMPANY  
 Address P.O. BOX 1127  
ROSEBURG OREGON  
 Party Chief KEN HOFFINE  
 Notes GARY ANDOLCT  
 Witness PAT KELLY

Surveyor's Seal



Expires 6-30-07

C.S. FILE NO 65/58-16