

FILED

Date: 11-30-05 By: JC

This survey consists of:

Map: \_\_\_\_\_

Native: \_\_\_\_\_

Corner Rpt: 65/54-40A-C

OREGON CORNER RESTORATION FORM

Section 22 Township 25S Range 4W

County DOUGLAS Date 9/21/05

Corner Designation

DOUGLAS COUNTY SURVEYOR

21 | 22  
28 | 27

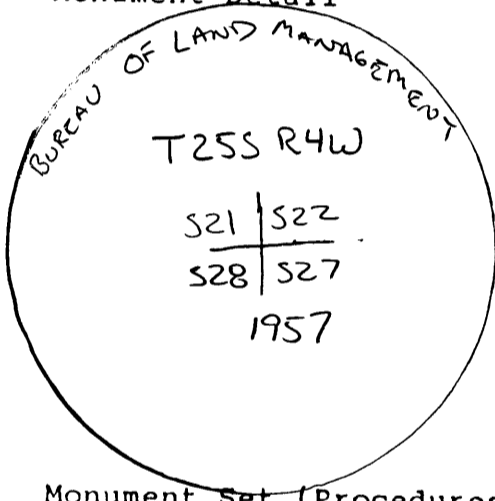
- \_\_\_ Condition Report Only
- \_\_\_ Not Found
- \_\_\_ Renewed
- \_\_\_ Unrecorded
- \_\_\_ Surveyed In
- \_\_\_ Referenced Out

Previous Renewals/Surveys, etc. \_\_\_\_\_

Monument(s) & Accessories Found: (Condition and Source)

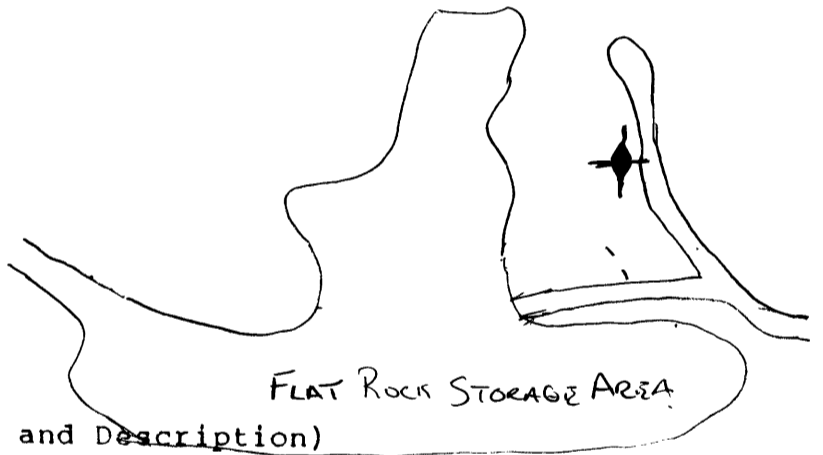
- FOUND 1957 BLM BRASS CAP WITH METAL FENCE POST ALONGSIDE
- 22" INCENSE CEDAR SWAG BEARS S31°39'W 13.8 FT (RECORD S31 1/2°W 13.2 FT)
- VISIBLE SCRIBING AND TAG
- 8" DEAD OAK BEARS N72°23'E 116.6 FT. (RECORD N67°E 116.8 FT)
- WELL HEALED FACE AND TAG

Monument Detail



Sketch

SEE ATTACHED MAP



Monument Set (Procedures and Description)

- SW CORNER POLE BARN BEARS N76°31'W 325.0 WE TAG
- New Accessories
- 20" CEDAR BEARS S77°51'W 354.65 FT WE SCRIBE S28 BT AND TAG
- 23" WHITE FIR BEARS S8°56'W 215.8 FT WE SCRIBE S28 BT AND TAG
- 6" OAK SCHNOCKMAEN AT FENCE CORNER BEARS N58°51'E 228.9 FT WE SCRIBE S22 BT
- 5/8" x 40" IRON ROD WITH YELLOW PLASTIC CAP BEARS N55°53'31"W 818.97 FT
- 5/8" x 40" IRON ROD WITH YELLOW PLASTIC CAP BEARS N34°34'15"W 978.18 FT

Location & Comments

CORNER SITS AT EAST  
EDGE OF ROCK PIT  
AND MAY BE IN  
JEOPARDY AS PIT  
SIZE INCREASES

Compass Declination 19 1/2  
Firm/Agency LOWE ROCK  
TIMBER  
Address P.O. BOX 1127  
ROSEBORO, OR 97470  
Party Chief KEN HOFFINE  
Notes KEN HOFFINE  
Witness GARY AUGIELT

Surveyor's Seal

REGISTERED  
PROFESSIONAL  
LAND SURVEYOR

Ken W Hoffine  
OREGON  
JULY 18, 1987  
KEN W. HOFFINE  
2801

Expires 6-30-07

# CORNER RENEWAL MAP

## TOWNSHIP 25 SOUTH RANGE 4 WEST

### CORNER FOR SECTIONS 21, 22, 27, & 28

REGISTERED  
PROFESSIONAL  
LAND SURVEYOR

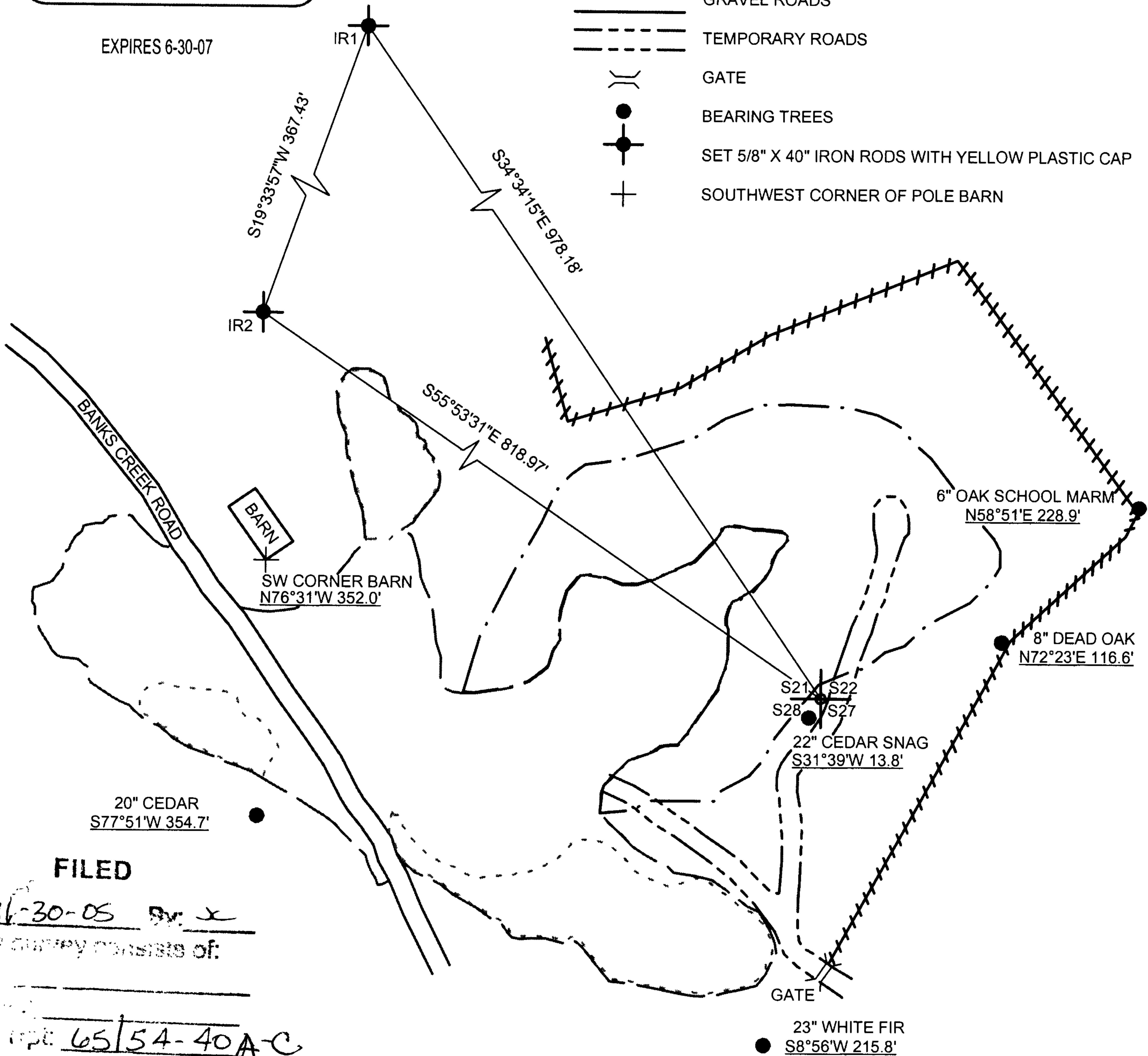
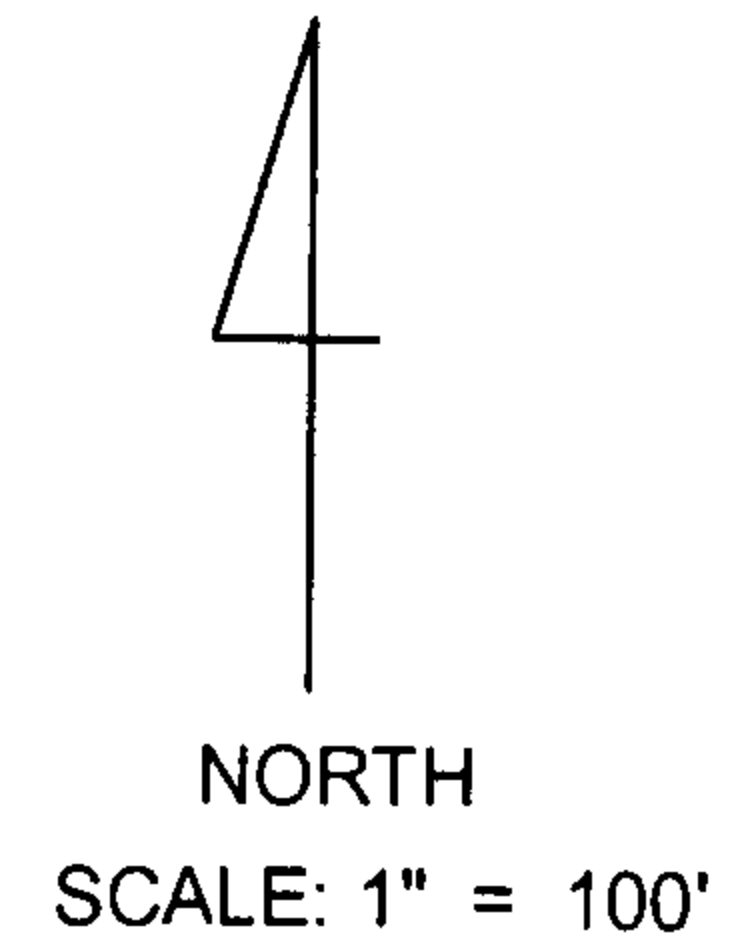
*Ken W. Hoffine*

OREGON  
JULY 16, 1987  
KEN W. HOFFINE  
2291

EXPIRES 6-30-07

**LEGEND:**

- — — — — ROCK STOCK PILE AREAS
- - - - - EXISTING ROCK STOCK PILES
- · - · - · EXISTING PIT BOUNDARY
- ////// FENCELINE
- ==== GRAVEL ROADS
- - - - - TEMPORARY ROADS
- ( ) GATE
- BEARING TREES
- ⊕ SET 5/8" X 40" IRON RODS WITH YELLOW PLASTIC CAP
- + SOUTHWEST CORNER OF POLE BARN



**FILED**

Date: 11-30-05 By: X  
 This survey consists of:  
 Map:  
 No. 65/54-40A-C  
 Corner type: 65/54-40A-C

**DOUGLAS COUNTY  
SURVEYOR**

**C.S. File No** 65/54-40B

Kastor (Banks Creek) Ranch Pit  
 Trimble 4 hrs 6 min from 10:40 AM Sep 28, 2005  
 4000 SSE Ant Height 1.177m 3.86 FT

Ken Hoffine

T255 R400

From: opus@ngs.noaa.gov  
 Sent: Friday, September 30, 2005 1:34 PM  
 To: khoffine@lrtc.com  
 Subject: OPUS solution : BCOR2710.DAT 000376219

21 | 22  
 ---  
 28 | 27

FILE: BCOR2710.DAT 000376219

NGS OPUS SOLUTION REPORT  
 =====

USER: khoffine@lrtc.com  
 RINEX FILE: bcor271r.05o

DATE: September 30, 2005  
 TIME: 20:34:11 UTC

SOFTWARE: page5 0411.19 master23.pl  
 EPHEMERIS: igr13423.eph [rapid]  
 NAV FILE: brdc2710.05n  
 ANT NAME: TRM22020.00+GP  
 ARP HEIGHT: 1.177

START: 2005/09/28 17:40:00  
 STOP: 2005/09/28 21:46:00  
 OBS USED: 7806 / 8384 : 93%  
 # FIXED AMB: 52 / 52 : 100%  
 OVERALL RMS: 0.015 (m)

REF FRAME: NAD\_83 (CORS96) (EPOCH:2002.0000)

ITRF00 (EPOCH:2005.7420)

X: -2540537.779 (m) 0.013 (m)  
 Y: -3887141.385 (m) 0.020 (m)  
 Z: 4357967.871 (m) 0.008 (m)

-2540538.503 (m) 0.013 (m)  
 -3887140.164 (m) 0.020 (m)  
 4357967.947 (m) 0.008 (m)

LAT: 43 22 25.76150 0.009 (m)  
 E LON: 236 49 56.56675 0.013 (m)  
 W LON: 123 10 3.43325 0.013 (m)  
 EL HGT: 269.902 (m) 0.021 (m)  
 ORTHO HGT: 293.227 (m) 0.033 (m)

43 22 25.77722 0.009 (m)  
 236 49 56.51016 0.013 (m)  
 123 10 3.48984 0.013 (m)  
 269.499 (m) 0.021 (m)  
 [Geoid03 NAVD88]

	UTM COORDINATES	STATE PLANE COORDINATES
	UTM (Zone 10)	SPC (3602 OR S)
Northing (Y) [meters]	4802342.167	193078.315
Easting (X) [meters]	486420.658	1283860.928
Convergence [degrees]	-0.11511437	-1.82504542
Point Scale	0.99960227	0.99990101
Combined Factor	0.99955996	0.99985869

US NATIONAL GRID DESIGNATOR: 10TDP8642102342 (NAD 83)

BASE STATIONS USED

PID	DESIGNATION	LATITUDE	LONGITUDE	DISTANCE (m)
AF9662	CABL CAPE BLANCO CORS ARP	N425009.939	W1243347.989	128360.5
AH2489	NEWP NEWPORT CORS ARP	N443506.072	W1240342.736	152507.5
AJ7211	DDSN DODSON BUTTE CORS ARP	N430707.631	W1231439.212	29019.7

NEAREST NGS PUBLISHED CONTROL POINT

PC0991	HIGH	N432213.369	W1230818.212	2395.9
--------	------	-------------	--------------	--------

This position and the above vector components were computed without any knowledge by the National Geodetic Survey regarding the equipment or field operating procedures used.

FILED

Date: 11-30-05 By: J

Checked by: \_\_\_\_\_

Checked by: \_\_\_\_\_

Checked by: \_\_\_\_\_

Checked by: 65/54-40AC