

FILED

Date: 11-24-2004 By: JC

1145-71

65/52-16A-C

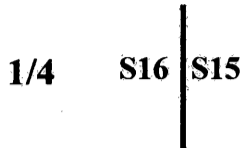
DOUGLAS COUNTY SURVEYOR

OREGON CORNER RESTORATION FORM

Section: 16 Township: 30S Range: 03W

County: Douglas Date: 11-12-04

Corner Designation



- Condition Report Only
- Not Found
- Renewed
- Unrecorded
- Surveyed In
- Referenced Out

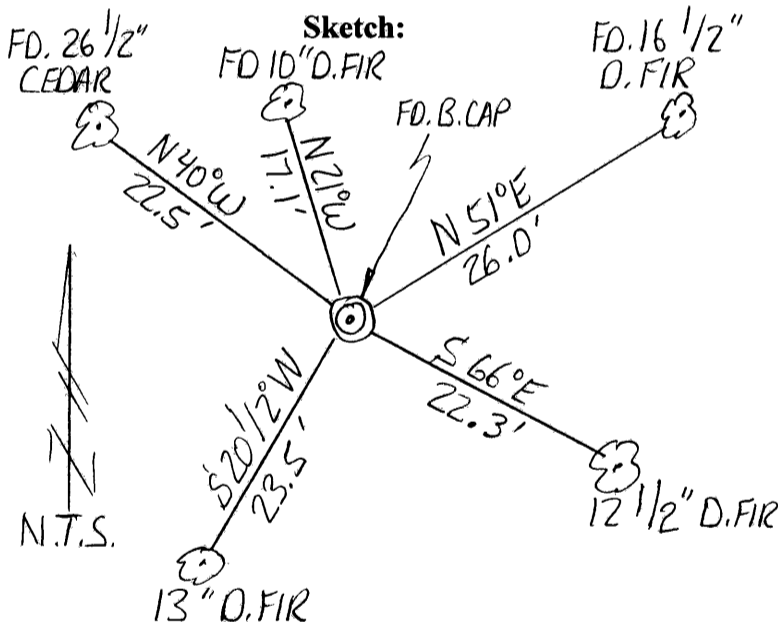
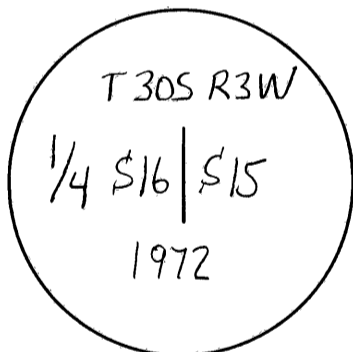
Previous Renewals / Surveys, etc.:

GLO in 1893 by Bushey; Original was remonumented by BLM resurvey in 1972.

Monument (s) & Accessories Found: (Condition & Source)

Found 3 1/2" Brass cap set by BLM
 26.5" Cedar (original) bears N40*W 22.5'
 16 1/2" D. Fir bears N51*E 26.0'(1972 by BLM)
 10" D. Fir bears N21*W 17.1'(1972 by BLM)

Monument Detail:



Monument Set (Procedures and Description)

N/A

New Accessories

13" D. Fir bears S20 1/2*W 23.5' scribed "1/4 S16 BT"
 12 1/2" D. Fir bears S66*E 22.3' scribed "1/4 S15 BT"

NOTE: We set and measured to spikes in the base of all bearing trees; bearings to the trees are based on BLM's 1972 survey line from the N1/4 Corner to the NW Section Corner of Section 21 (S89*41'00"W).

Location & Comments

Corner is located on a southerly slope 100' north of a dirt road.

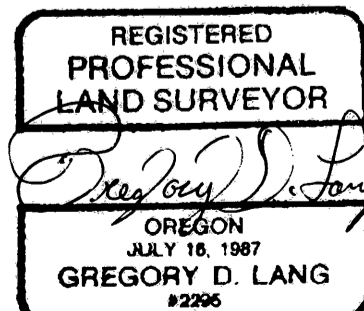
Compass Declination: N/A

Firm/Agency:
 Gregory D. Lang, Surveyor
 Address: 7550 Willis Cr. Rd.
 Winston, Oregon 97496
 Party Chief: Gregory Lang

Notes: Same

Witness: Trevor Lang

Surveyor's Seal



C.S. File No 65/52-16C