

FILED

Date: 11-24-2004 By: X  
This survey consists of:  
Map: H145-71  
Corner: 65/52-16A-C

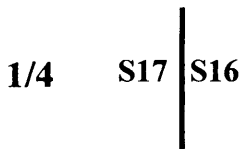
# OREGON CORNER RESTORATION FORM

Section: 16 Township: 30S Range: 03W

County: Douglas Date: 11-12-04

DOUGLAS COUNTY  
SURVEYOR

### Corner Designation



- Condition Report Only
- Not Found
- Renewed
- Unrecorded
- Surveyed In
- Referenced Out

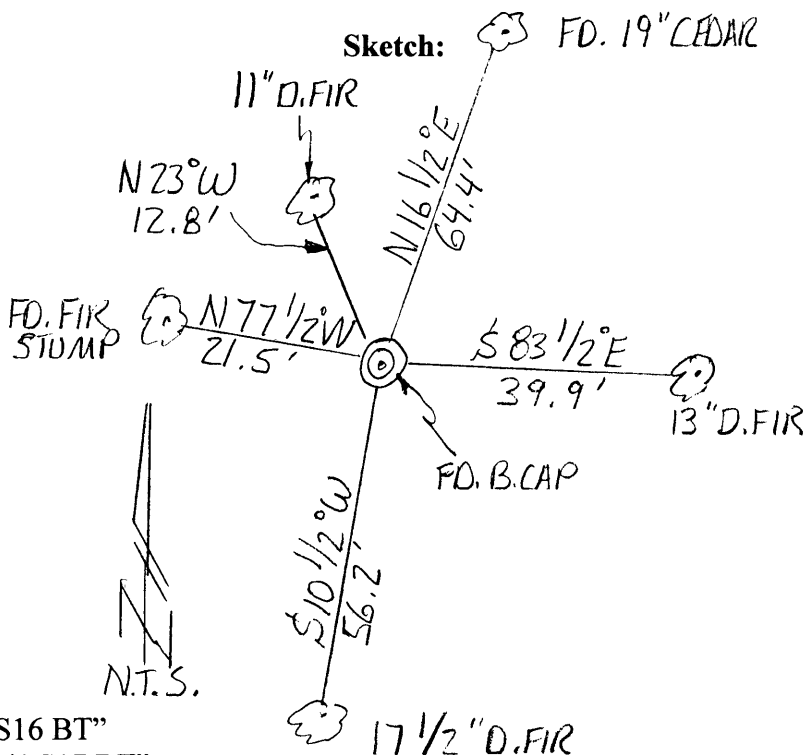
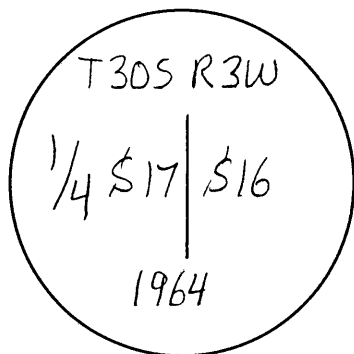
### Previous Renewals / Surveys, etc.:

GLO in 1893 by Bushey; Original was remonumented by Douglas County in 1964 per C.S. file 52/138.

### Monument (s) & Accessories Found: (Condition & Source)

Found DCSO Brass cap  
19" Cedar bears N16 1/2°E 64.4' (1964 by DCSO)  
Fir stump bears N77 1/2°W 21.5' (1964 by DCSO)

### Monument Detail:



### Monument Set (Procedures and Description)

N/A

### New Accessories

13" D. Fir bears S83 1/2°E 39.9' scribed "1/4 S16 BT"  
17 1/2" D. Fir bears S10 1/2°W 56.2' scribed "1/4 S17 BT"  
11" D. Fir bears N23°W 12.8' scribed "1/4 S17 BT"

NOTE: We set and measured to spikes in the base of all bearing trees; bearings to the trees are based on BLM's 1972 survey line from the N1/4 Corner to the NW Section Corner of Section 21 (S89°41'00"W).

### Location & Comments

Corner is located on an east-erly slope and on the east side of a gravel road; corner is also northerly of the same gravel road as said road proceeds to the south and east.

Compass Declination: N/A

### Firm/Agency:

Gregory D. Lang, Surveyor  
Address: 7550 Willis Cr. Rd.  
Winston, Oregon 97496

Party Chief: Gregory Lang

Notes: Same

Witness: Trevor Lang

### Surveyor's Seal



EXPIRES 12-31-2004

C.S. File No 65/52-16A