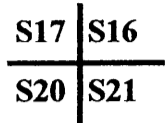


OREGON CORNER RESTORATION FORM

Section: 16 **Township:** 30S **Range:** 03W
County: Douglas **Date:** 10-12-04

FILED
 Date: 10-15-2004 By: X
 Name: _____
 Corner Rpt: 65/52-12

Corner Designation



- Condition Report Only **DOUGLAS COUNTY SURVEYOR**
- Not Found
- Renewed
- Unrecorded
- Surveyed In
- Referenced Out

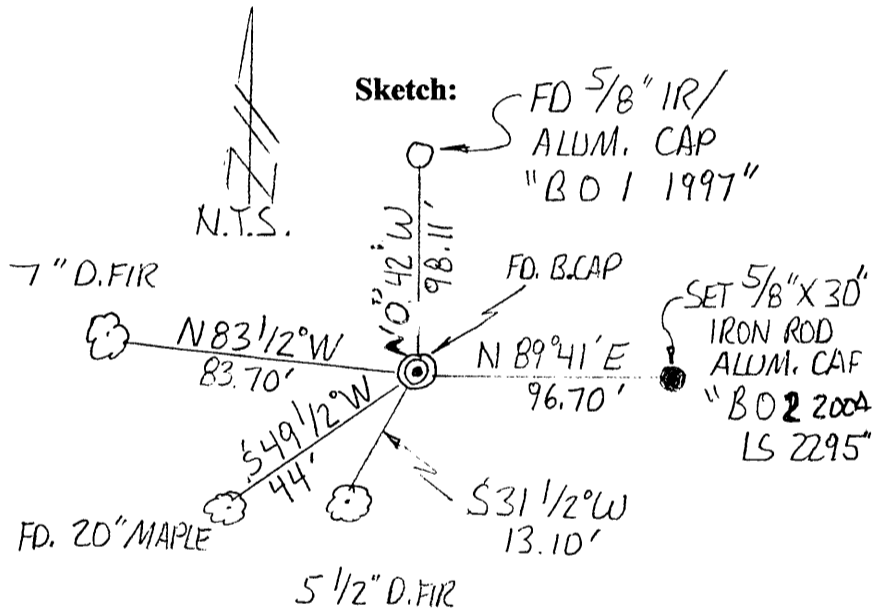
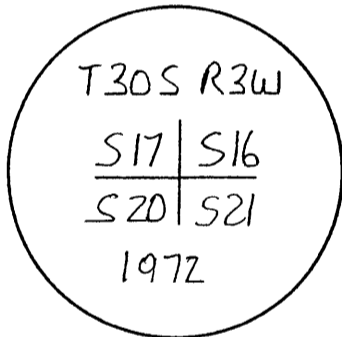
Previous Renewals / Surveys, etc.:

Original GLO by Bushey in 1893; original was remonumented by Markham in 1951; renewed by Byron in Jan. 1963; remonumented by BLM in 1972; renewed by Douglas County in 1997.

Monument (s) & Accessories Found: (Condition & Source)

Found 3 1/2" BLM brass cap
 A 20" Maple bears S 49 1/2*W 44.00'(1952 tree by Markham)
 A found 5/8"IR with a DCSO Aluminum cap bears N00*42'W 98.11' stamped "B O 1 1997"

Monument Detail:



Monument Set (Procedures and Description)

N/A

New Accessories

Set 5/8"x 36"IR/Aluminum cap bears N89*41'E 96.70' stamped "B O 2 2004 LS 2295"
 5 1/2" D. Fir bears S31 1/2*W 13.10' scribed "S20 BT"
 7" D. Fir bears N83 1/2*W 83.70' scribed "S17 BT"

NOTE: We set and measured to spikes in the base of all bearing trees; bearings to the trees are based on BLM's 1972 survey line from the N1/4 Corner to the NW Section Corner of Section 21 (S89*41'00"W).

Location & Comments

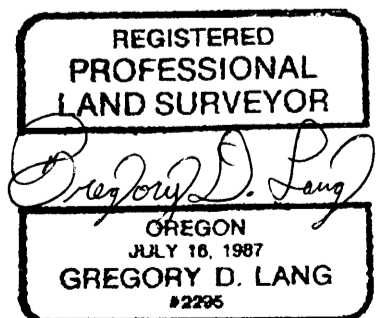
Corner lies on the top of a ridge and on the south side of a new rock road.

Compass Declination: N/A

Firm/Agency:

Gregory D. Lang, Surveyor
 Address: 7550 Willis Cr. Rd.
 Winston, Oregon 97496
Party Chief: Gregory Lang
Notes: Same
Witness: Trevor Lang

Surveyor's Seal



EXPIRES 12-31-2004

C.S. File No 65/52-12