

FILED

Date: 8-5-2004 By: JC

This survey consists of:

PUBLIC LAND CORNER

INDEX NO. \_\_\_\_\_

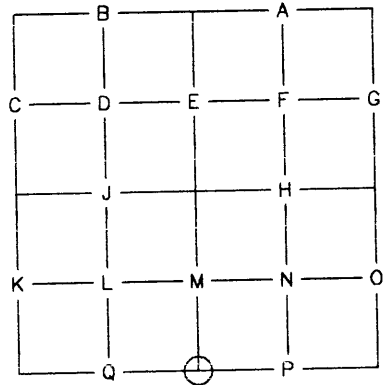
Map No. \_\_\_\_\_

Corner: 65/52-2 4CB

WEYERHAEUSER COMPANY

DOUGLAS COUNTY SURVEYOR

WILLAMETTE REGION



TOWNSHIP 23 SOUTH RANGE 1 WEST  
 SECTION 30 CORNER S 1/4  
 COUNTY DOUGLAS OREGON

ORIGINAL CORNER DATED: 1894 BY: GLO - CHANDLER  
 CORNER: 12"X10"X8" STONE WITH "1/4" ON NORTH FACE  
 ACCESSORIES: 6" FIR, N 65 W, 9 LKS.  
9" FIR, S 58-1/2 W, 27 LKS.

RE-ESTABLISHMENT NOTES DATED: 1964 BY: BLM - GLENN  
 EVIDENCE RECOVERED: 8" FIR STUMP, N 65 W, 9 LKS. - SCRIBING VISIBLE  
ROOT HOLE, S 58-1/2 W, 27 LKS. - 12" DOWN FIR WITH HEALED BLAZE ALONGSIDE

CORNER SET: 2-1/2"X28" IRON PIPE WITH BRASS CAP DATED 1964  
 ACCESSORIES ESTABLISHED: 23" FIR, N 18 W, 51-1/2 LKS. - SCRIBED "1/4 S30 BT"  
21" FIR, S 6-1/2 E, 48 LKS. - SCRIBED "1/4 S31 BT"  
STONE DEPOSITED ALONGSIDE IRON POST

RE-ESTABLISHMENT NOTES DATED: \_\_\_\_\_ BY: \_\_\_\_\_  
 EVIDENCE RECOVERED: \_\_\_\_\_

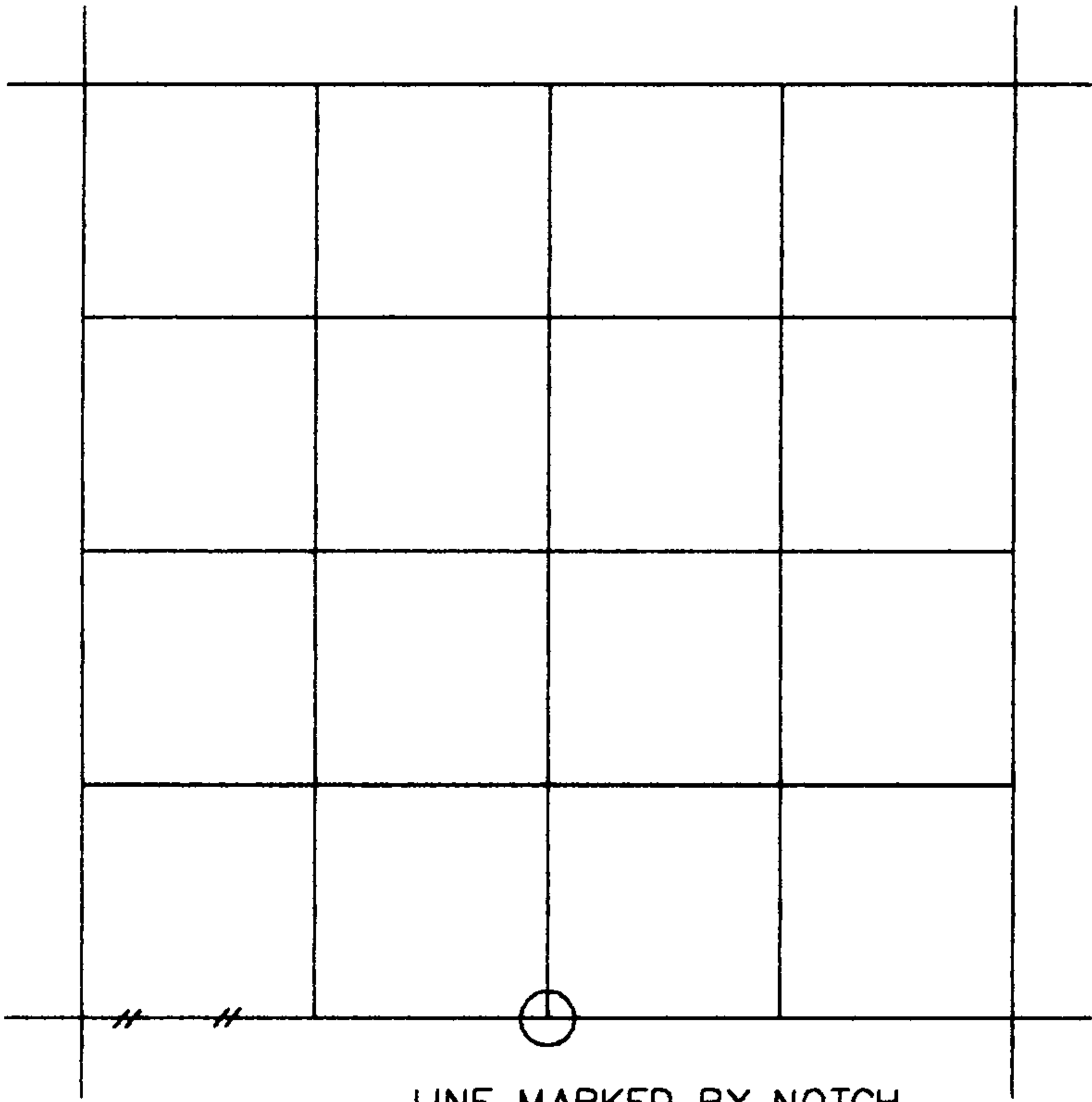
CORNER SET: \_\_\_\_\_  
 ACCESSORIES ESTABLISHED: \_\_\_\_\_

REMONUMENTATION  
 DATE: 7/8/04 BY: DAVID WELLMAN TITLE: PLS 2163 FIRM: D. WELLMAN SURVEYING  
 EVIDENCE RECOVERED: 2-1/2" IRON PIPE WITH BLM BRASS CAP DATED 1964, AT GRADE  
34" FIR, 1964 BLM TAG READS "S 18 E, 51-1/2 LKS." - CLOSED FACE  
24" FIR, 1964 BLM TAG READS "N 6-1/2 W, 48 LKS." - CLOSED FACE  
25" FIR, 1964 BLM TAG READS "S 65 E, 9 LKS." - CLOSED FACE  
 CORNER SET: \_\_\_\_\_

ACCESSORIES ESTABLISHED: \_\_\_\_\_  
24" FIR, N 59-1/2 E, 18.8 FEET TO SPIKE SET SIDE CENTER - SCRIBED "1/4 S30 BT"

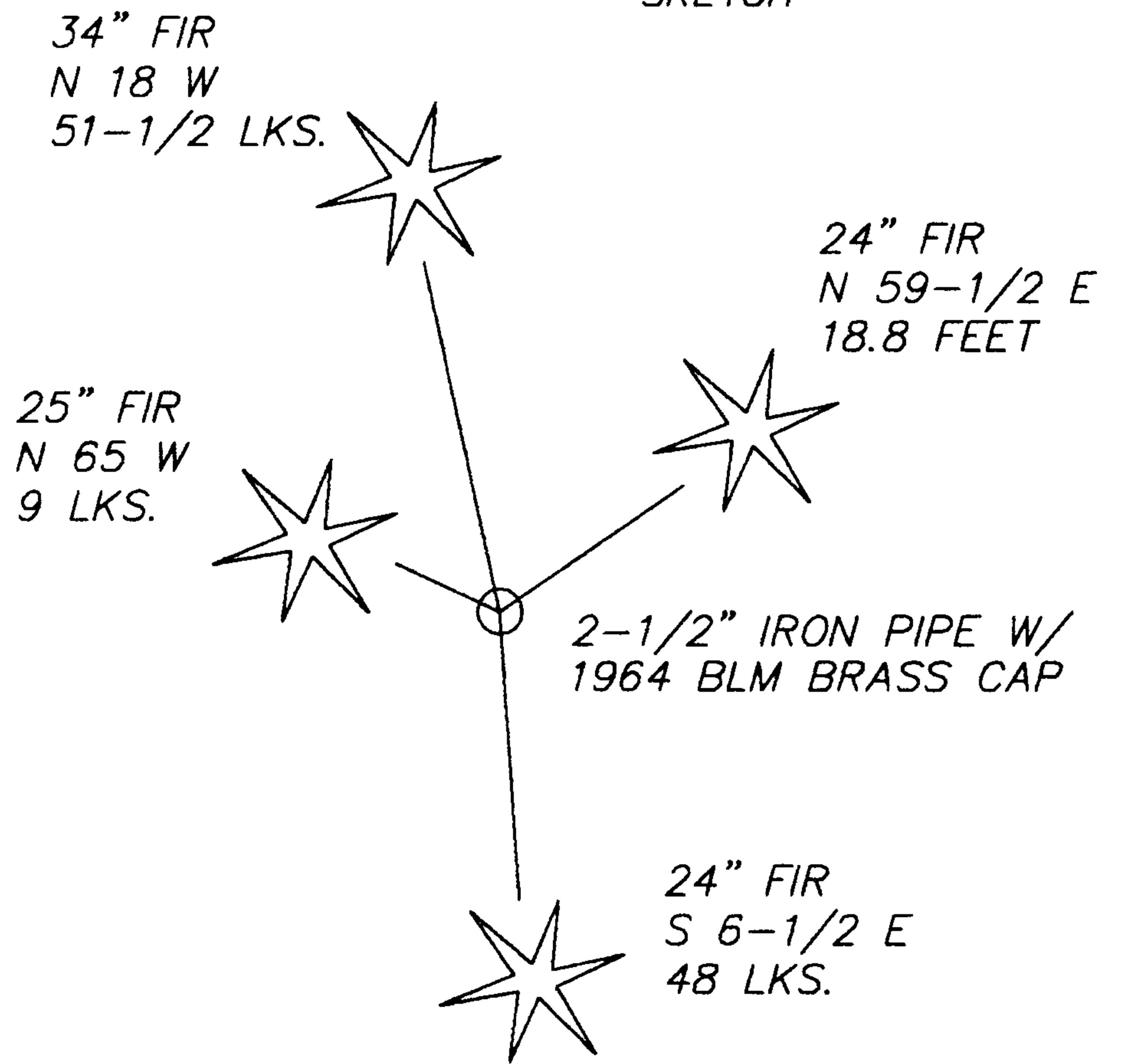
OTHER INFORMATION: 6' METAL FENCE POST 1 FOOT SOUTH

SECTION 30 TOWNSHIP 23 S RANGE 1 W



- LINE MARKED BY NOTCH CUT IN BLAZE
- KNOWN CORNER
- REFERENCED CORNER BY WEYERHAEUSER METHOD

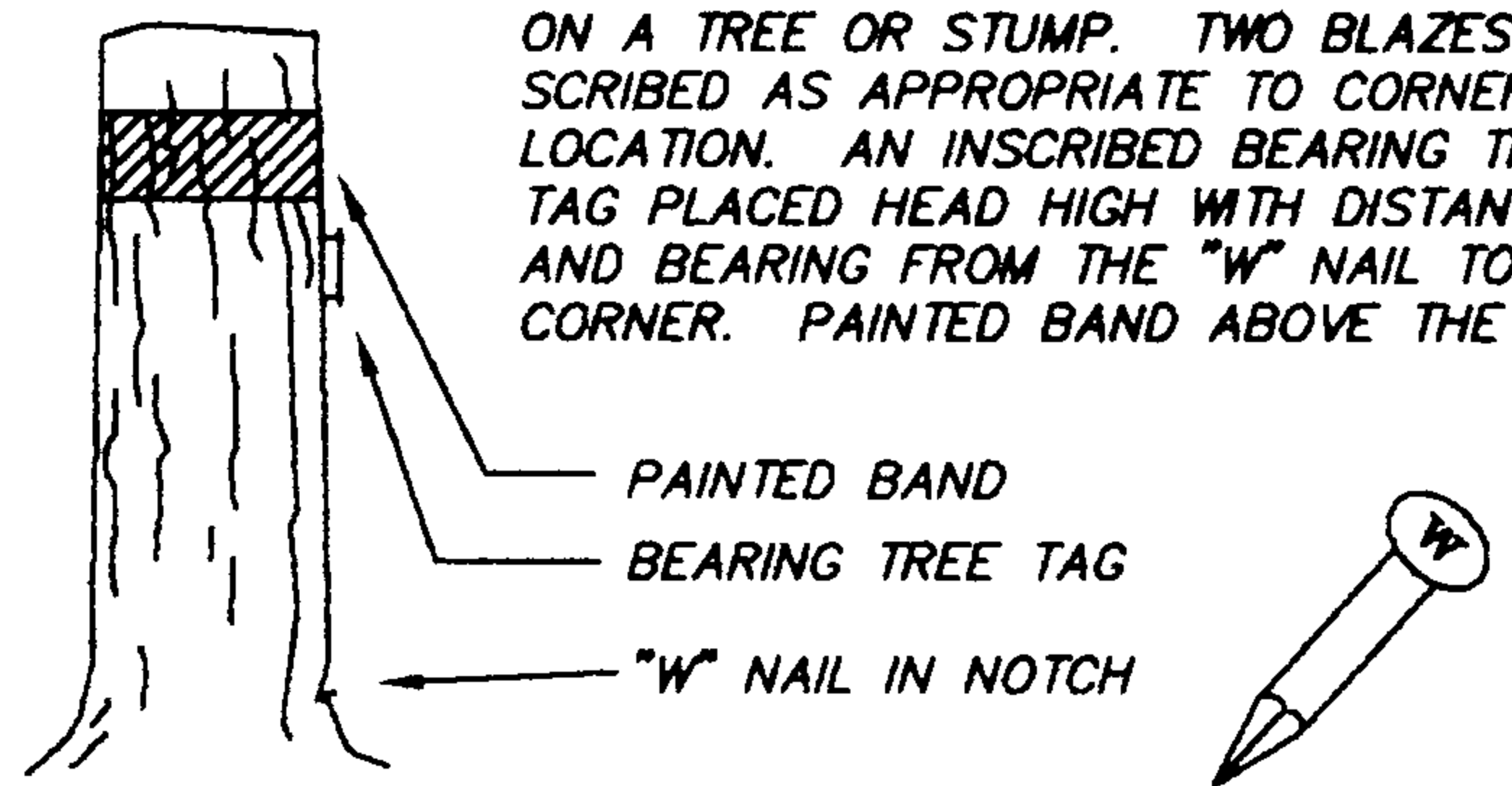
SKETCH



WEYERHAEUSER COMPANY

CORNER REFERENCE METHOD

A "W" NAIL DRIVEN INTO A NOTCH LOW ON A TREE OR STUMP. TWO BLAZES SCRIBED AS APPROPRIATE TO CORNER LOCATION. AN INSCRIBED BEARING TREE TAG PLACED HEAD HIGH WITH DISTANCE AND BEARING FROM THE "W" NAIL TO THE CORNER. PAINTED BAND ABOVE THE TAG.



IDENTIFIED ON PHOTO: \_\_\_\_\_

INFORMATION ON CORNER AS NOW SET

GROUND COVER: OLD GROWTH TO SOUTH, FIR TO 10" TO NORTH

SLOPE FACE (BEARING) N 70 E (-) 70 %

FROM CORNER

NORTH	<u>-5%</u>
SOUTH	<u>+10%</u>
EAST	<u>-70%</u>
WEST	<u>+80%</u>

BY: DAVID WELLMAN DATE: 7/8/04

FIRM: D. WELLMAN SURVEYING

ASSISTED BY: ERIN HEATHERSTONE

COPIES TO: DOUGLAS COUNTY

ORS 672-025

REGISTERED PROFESSIONAL LAND SURVEYOR

*David H. Wellman*

OREGON  
JULY, 1985  
DAVID H. WELLMAN  
2163

RENEWAL 6/30/06