

CORNER REPORT FORM

Section 2 Township 26S Range 2 W.W.M.  
Douglas County Date April 26, 2004

CORNER DESIGNATION

N 1/4 S2 Only

Condition Report only  
Not Found  
\* Renewed  
Unrecorded  
Surveyed In  
Referenced out

Previous Renewals/Surveys, etc:

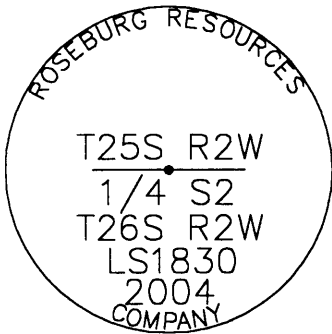
Monument(s) & Accessories Found: (Condition and Source)

14"x12"x8" stone marked with "1/4 on south face with tack in top.

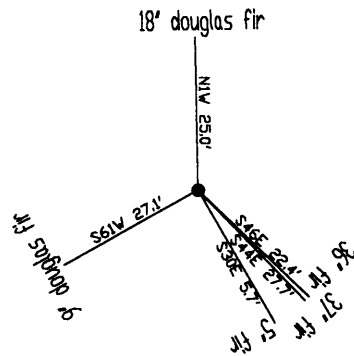
36" (32") fir with double healed faces, bears S46E (S60E), 22.4 feet.  
37" (32") fir with visible bark scribe "1/4 S2", bears S44E, 27.7 feet.  
5" fir with double healed faces, bears S30E (S40E), 5.7 feet.

FILED  
Date: 5/25/2004 By: SC  
This survey consists of:  
Map: M 144-47  
No. of: \_\_\_\_\_  
Corner Rpt: 65/49-34 A-F  
DOUGLAS COUNTY  
SURVEYOR

Monument Detail



Sketch



Monument Set (Procedures and Description)

5/8"x30" iron rod with a 2-1/2" aluminum cap, 0.4 feet above grade with collar of small stones.  
Found stone set approximately 0.5 feet north of aluminum cap.

The tack on top of the found stone was tied for coordinate value. The found stone was then moved and the iron rod set in its place using the stakeout program in "TDS" data collector survey program.

New Accessories

A douglas fir 9" diameter, bears S61W, 27.1 feet, face scribed "T26S R2W S2 BT".  
A douglas fir 18" diameter, bears N1W, 25.0 feet, face scribed "T25S R2W BT".

Location & Comments

Distances to found bearing trees were measured with EDM at approximate side center of root crown. New bearing trees were measured to a spike set at approximate side center. Trees were red band and face painted. Trees found without tags have new tags facing monument.

Compass Declination 19 East  
Firm/Agency: i.e. Engineering, Inc.

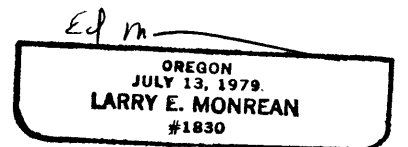
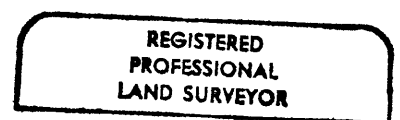
Address: 741 SE Jackson  
Roseburg, OR 97470

Party Chief: Bruce Webster

Notes:

Witness:

Surveyor's Seal



CERT. EXP. 12-31-04

C.S. File No 65/49-34 F