

CORNER REPORT FORM

Section 2 Township 26S Range 2 W.W.M.  
Douglas County Date April 26, 2004

CORNER DESIGNATION

CS 1/16

Condition Report only  
Not Found  
 Renewed  
Unrecorded  
Surveyed In  
Referenced out

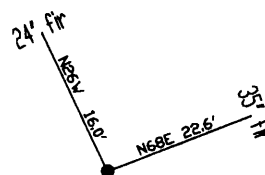
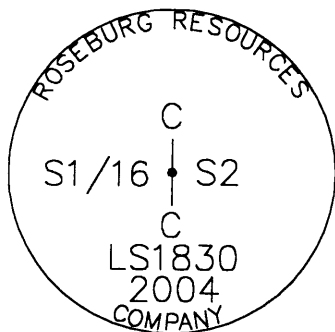
Previous Renewals/Surveys, etc:

Monument(s) & Accessories Found: (Condition and Source)

24" (16") fir with double healed faces, bears N26W, 16.0 feet. For verification, lower blaze was sawed into and popped to reveal "BT" scribe  
35" (26") fir with double healed faces, bears N68E, 22.6 feet.

Monument Detail

Sketch



Monument Set (Procedures and Description)

A 5/8" x 30" iron rod with a 2-1/2" aluminum cap 0.2 feet above grade.

Spikes were set at approximate side center of root crown for distance measurement. A Nikon total station and "TDS" software was then used to establish approximate center of tree. A distance-distance intersection from approximate center of each tree was then used to establish the the corner position which was staked out and set.

New Accessories

Location & Comments

Trees were red band and face painted.  
Trees found without tags have new tags facing monument.

Compass Declination 19 East  
Firm/Agency: i.e. Engineering, Inc.

Address: 741 SE Jackson  
Roseburg, OR 97470

Party Chief: Bruce Webster

Notes:

Witness:

FILED  
Date: 5/25/2004 By: JC  
This survey consists of:  
Map: M144-47  
No. of pages:  
Corner Sp: 65/49-34 A-F  
DOUGLAS COUNTY  
SURVEYOR

Surveyor's Seal

REGISTERED  
PROFESSIONAL  
LAND SURVEYOR

Ed M  
OREGON  
JULY 13, 1979  
LARRY E. MONREAN  
#1830

CERT. EXP. 12-31-04

C.S. File No 65/49-34B