

CORNER REPORT FORM

Section 2 Township 26S Range 2W.,W.M.
Douglas County Date April 26, 2004

CORNER DESIGNATION

CN 1/16

Condition Report only
Not Found
Renewed
Unrecorded
x Surveyed In
Referenced out

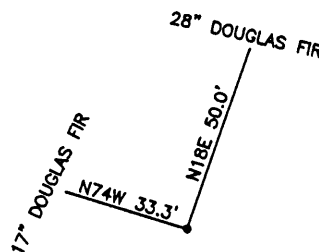
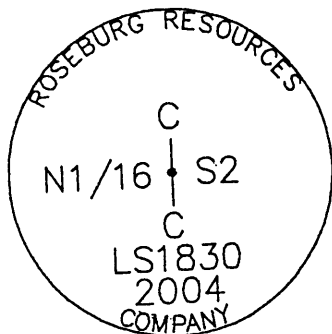
Previous Renewals/Surveys, etc:

Monument(s) & Accessories Found: (Condition and Source)

FILED
Date: 5/25/04 By: JE
This survey consists of:
Map: M144-47
Narrative:
Corner Rpt: 65/49-34A-F
DOUGLAS COUNTY
SURVEYOR

Monument Detail

Sketch



Monument Set (Procedures and Description)

A 5/8" x 30" iron rod with a 2-1/2" aluminum cap 0.2 feet above grade.
Spikes were set at approximate side center of root crown for distance measurement. A Nikon total station and "TDS" software was then used to establish approximate center of tree.

New Accessories

A 17" diameter douglas fir, bears N47W 33.3 feet with face scribed "CN1/16S2BT".
A 28" diameter douglas fir, bears N18E 50.0 feet with face scribed "CN1/16S2BT".

Location & Comments

Trees were red band, face painted and tagged.

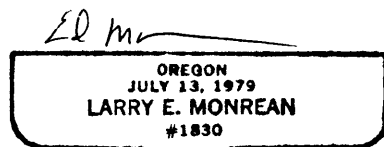
Compass Declination 19 East
Firm/Agency: i.e. Engineering, Inc.

Address: 741 SE Jackson
Roseburg, OR 97470

Party Chief: Bruce Webster

Notes:
Witness:

Surveyor's Seal



CERT. EXP. 12-31-2004

C.S. File No 65/49-34A