

CORNER REPORT FORM

Section 8 Township 31S Range 6W.W.M.  
Douglas County Date October 19, 2003

CORNER DESIGNATION

200500

- Condition Report only
- Not Found
- Renewed
- Unrecorded
- Surveyed In
- Referenced out

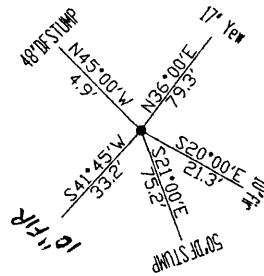
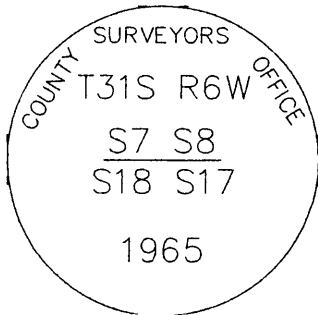
Previous Renewals/Surveys, etc:

Monument(s) & Accessories Found: (Condition and Source)

2-1/2" brass cap on 1" galvanized iron pipe 15" above grade.  
 A 48" diameter sawed fir stump with no bark, bears N45W, 4.9 feet to center of stump with healed face and tag.  
 Now covered with automobile hood wired on.  
 (A root hole bears N31E, 103 lks distance) now indeterminate. With a down fir lying down hill 36" diameter with partially visible scribe and tag.  
 A tin covered sawed fir stump 50" diameter, bears S21E, 75.2 feet with partially visible mostly healed double blaze and tag.  
 A double Yew 17" measured below fork, bears N36E, 79.3 (78.5) feet with visible scribe "T31S R6W S8 BT" and tags front and back.  
 A fir 10" diameter, bears S20E, 21.3 (21.1) feet with healed double face and tag.  
 A fir 10" diameter, bears S41-3/4W, 33.2 (33.0) feet with healed double face. I place new tag.

Monument Detail

Sketch



Monument Set (Procedures and Description)

FILED

Date: 11-7-2003 By: JL

This survey consists of:

Map: \_\_\_\_\_

Name: \_\_\_\_\_

Corner Post: 65/48-26

DOUGLAS COUNTY SURVEYOR

New Accessories

Location & Comments

Distances to found bearing trees were measured with EDM at approximate side center. Trees were red band and face painted.

Compass Declination 19 East

Firm/Agency: i.e. Engineering, Inc.

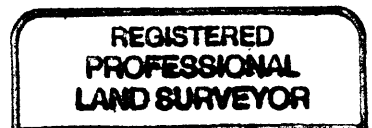
Address: 741 SE Jackson  
Roseburg, OR 97470

Party Chief: Bruce Webster

Notes:

Witness:

Surveyor's Seal



Exp. Date 12/31/03  
C.S. File No 65/48-26