

"H TO I" GIS GPS MEASURE N17°W, 238.1 FEET (RECORD S16°30'E, 235.7 FEET)

I = LAT 43°18'33.6" LONG 123°06'42.7" MSL 887

"I TO J" GIS GPS MEASURE N15°W, 565.9 FEET (RECORD S14°08'E, 568.5 FEET)

J = LAT 43°18'28.2" LONG 123°06'40.7" MSL 715

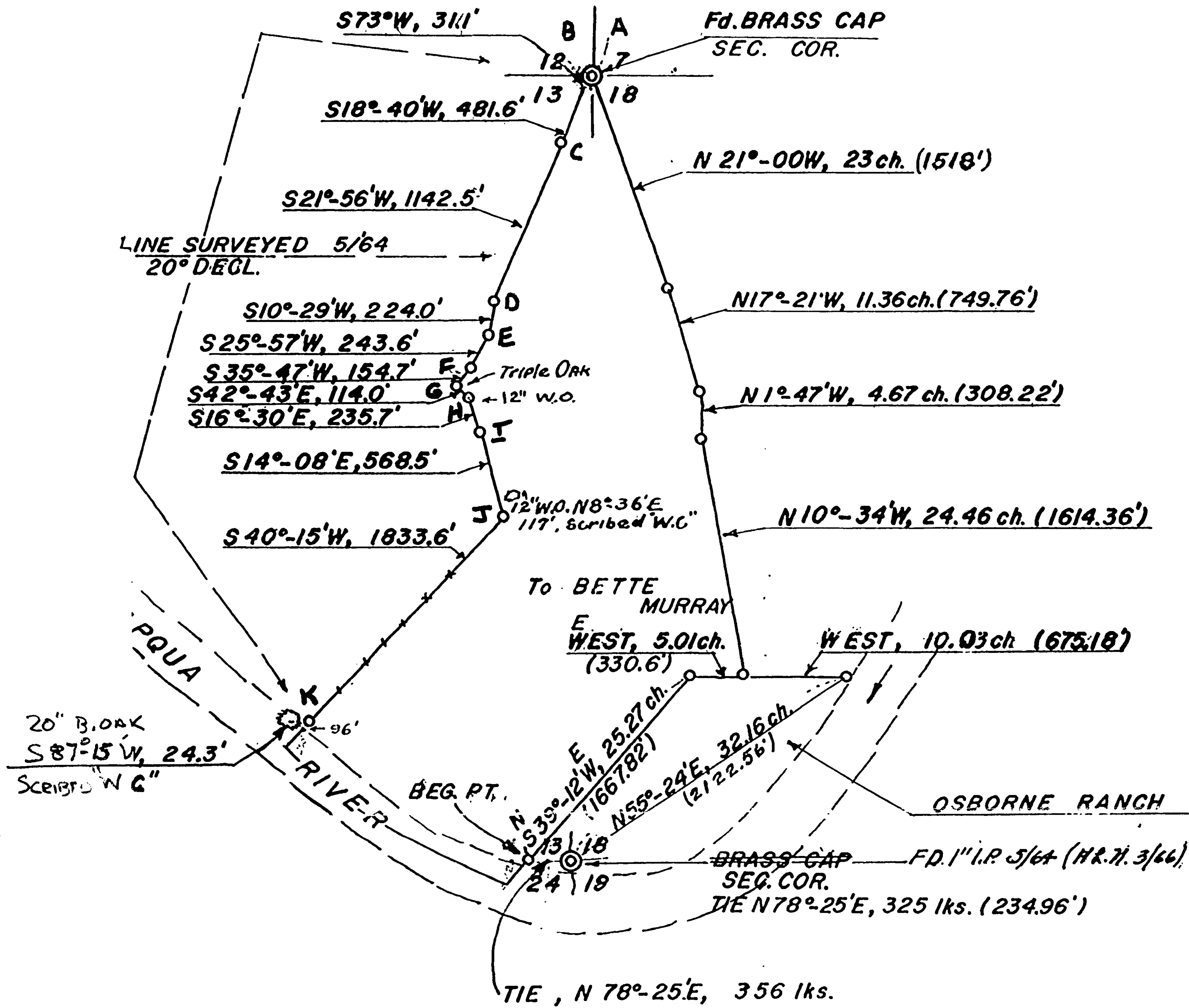
"J TO K" GIS GPS MEASURE N39 1/2°E, 1834.2 FEET (RECORD S40°15'W, 1833.6 FEET)

K = LAT 43°18'14.2" LONG 123°06'56.5" MSL 681

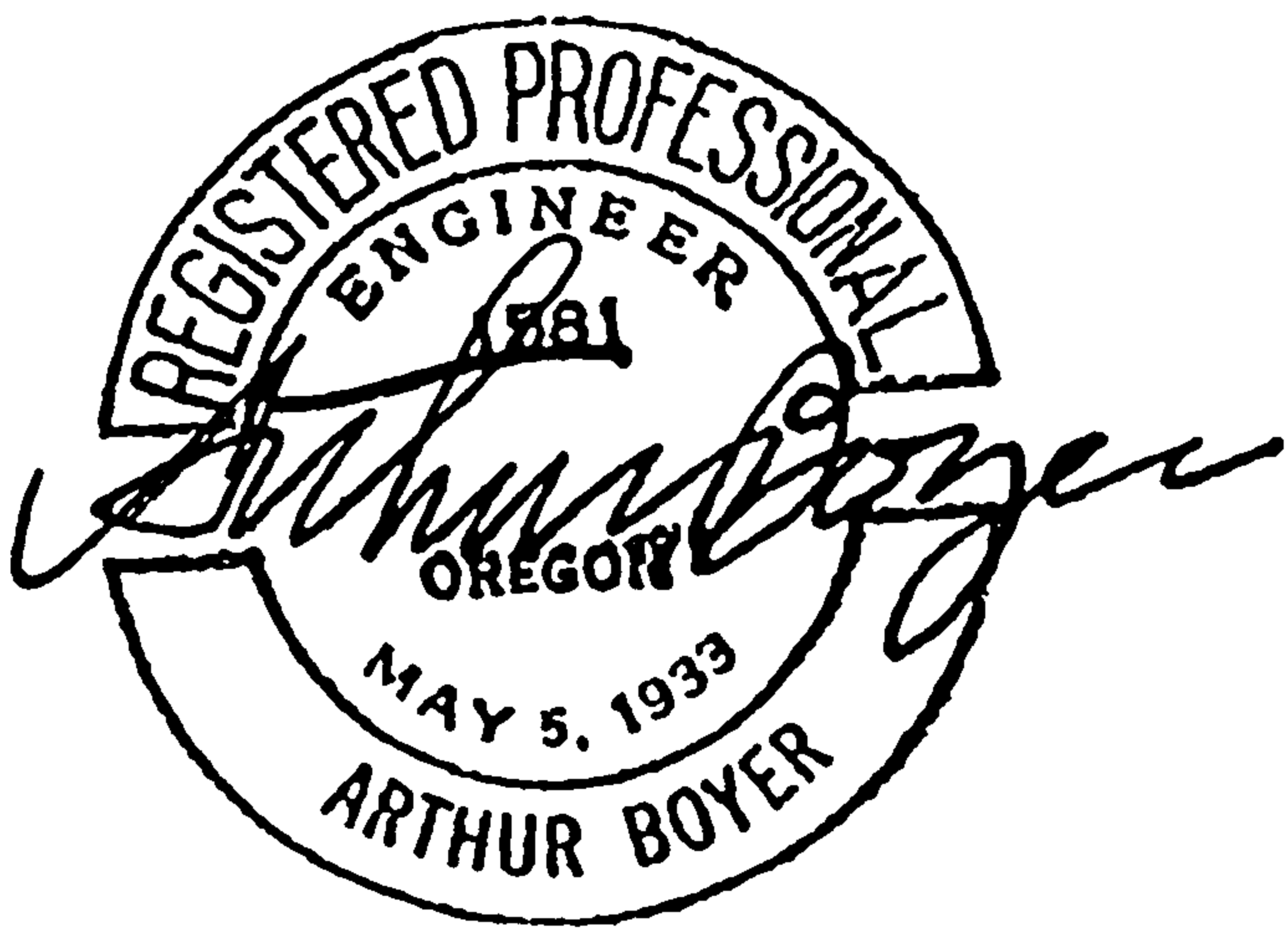


Ken. 6-5-2002

C.S. File No 65/46-11B



COUNTY SURVEYORS FILE
DO NOT REMOVE FROM OFFICE



MURRAY RANCH
SECTIONS 1, 12, 13, 14, 15
T 26 S; R 3 & 4 W; W.M.
DOUGLAS COUNTY, OREGON
MAY, 1964 SCALE 1"=1000'

MAP FILE M277
M 27-79