

FILED

Date: 6/10/2003 By: JP

This survey consists of:

Map: M 142-36

Narrative: _____

Corner Rpt: CS 65/45-32 B

CORNER REPORT FORM

Section 4 Township 31S Range 4 W.W.M.

Douglas County Date May 25, 2003

CORNER DESIGNATION

1/16 S5 | S4 80

* DOUGLAS COUNTY SURVEYOR
Conditions Report only
Not Found
Renewed
Unrecorded
Surveyed In
Referenced out

Previous Renewals/Surveys, etc:

Dependent resurvey - DCSO Page 18152

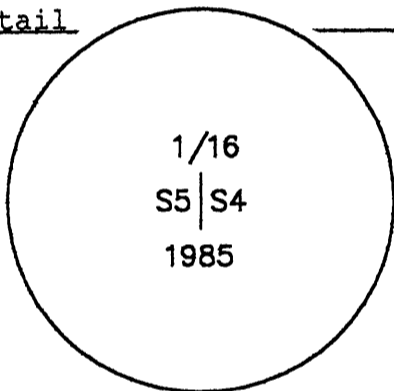
Monument(s) & Accessories Found: (Condition and Source)

3-1/4" BLM brass cap on 2-1/2" Stainless pipe 0.4 feet above grade.
Monument is set in shorter of twin 24+/-" incense cedar stumps. One is at grade and the second is 3.0 feet tall.

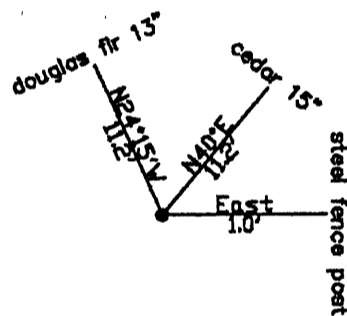
A cedar 15" with healed face Bears N40E, 11.2 feet.
A douglas fir 13" with healed face Bears N24-15W, 11.2 feet.

Both bearing trees were paint banded and face painted red.
New tags were marked and placed on bearing trees facing corner.

Monument Detail



Sketch



Monument Set (Procedures and Description)

New Accessories

Light weight steel fence post Bears East, 1.0 feet.

Location & Comments

Corner falls approximately 539 feet west of a rocked haul road on 60-70% west facing slope just above the cut bank of a older N-NW dirt spur.

Compass Declination 19 East
Firm/Agency: i.e. Engineering, Inc.

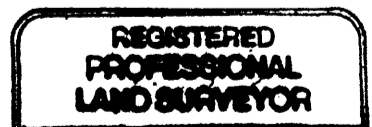
Address: 741 SE Jackson
Roseburg, OR 97470

Party Chief: Bruce Webster

Notes:

Witness:

Surveyor's Seal



C.S. File No 65/45-32B Exp. Date 12/31/03