

FILED

Date: 5/8/2003 By: JC

This survey consists of:

Map: _____

Name: _____

Corner Rpt: 65/45-23

OREGON CORNER RESTORATION FORM

Section 18 Township 32S Range 7W

County DOUGLAS Date 4/03

DOUGLAS COUNTY SURVEYOR

CORNER DESIGNATION

200440

- Condition Report Only
- Not Found
- Renewed
- Unrecorded
- Surveyed In
- Referenced Out

Previous Renewals/Surveys, etc.

(DCSO RECORDS Vol 21, PAGE 8759) 1881

(DCSO RECORDS Vol 42, PAGES 16502-03)

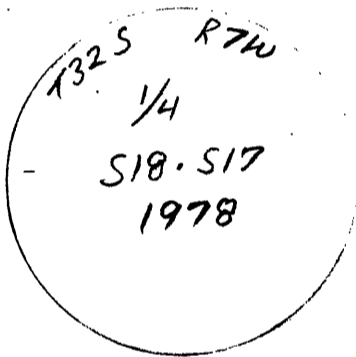
Monument(s) & Accessories Found: (Condition and Source)

3 1/4" BLM BRASS CAP ON 2 1/2" GALVANIZED IRON PIPE, (B.L.M. 1978)

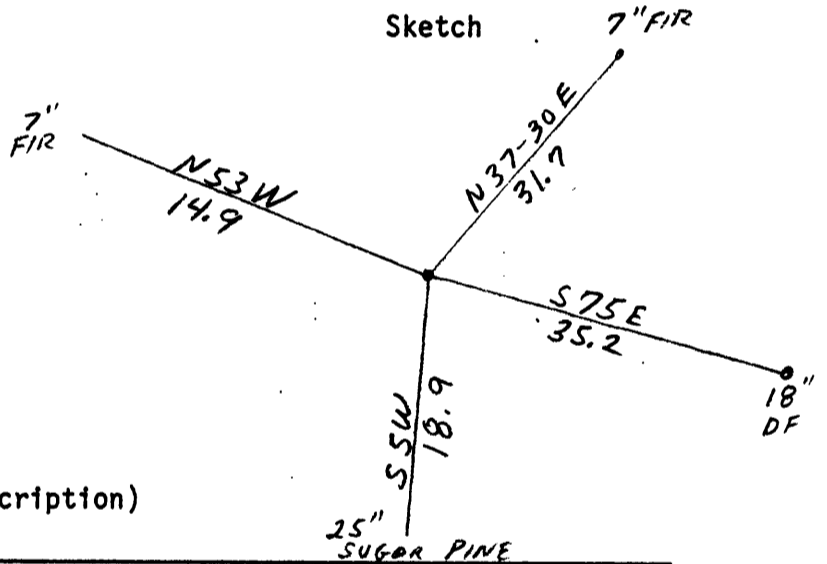
A 7" FIR WITH HEALED FACE BEARS N37-30E, 31.7 FEET, (B.L.M. 1978)

A 7" FIR WITH HEALED FACE BEARS N53W, 14.9 FEET, (B.L.M. 1978)

Monument Detail



Sketch



Monument Set (Procedures and Description)

New Accessories

A 25" SUGAR PINE SCRIBED (T32S R7W S18 E 1/4 BT) BEARS SSW, 18.9 FEET TO SIDE CENTER.

A 18" DOUGLAS FIR SCRIBED (T32S R7W S17 W 1/4 BT) BEARS S75E, 35.2 FEET TO SIDE CENTER.

Location & Comments

APPROXIMATELY 0.3 Compass Declination 17-30E

MILES IN ON SPUR Firm/Agency I.E.

32-7-17.2. CORNER ENGINEERING

FALLS APPROX. 125 FEET Address 741 SE JACKSON

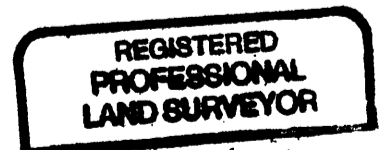
SOUTH OF SAID SPUR ROSEBURG, OR 97470

ON SOUTH FACING Party Chief BRUCE WEBSTER

SLOPE Notes _____

Witness _____

Surveyor's Seal



Jerry Lee Estabrook



Exp. Date 12-31-03

C.S. File No 65/45-23