

FILED

Date: 9-10-2002 By: SC

This survey consists of:

Map: _____

Narrative: _____

Corner Rpt: 65/44-15

DOUGLAS COUNTY
SURVEYOR

CORNER RENEWAL MAP

LONE ROCK TIMBER CO.

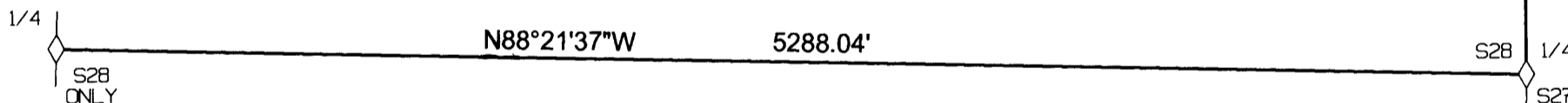
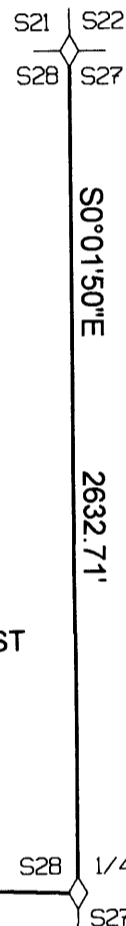
SURVEY BY: LONE ROCK TIMBER CO.
PO BOX 1127 ROSEBURG, OREGON 97470
SECTION 28, TOWNSHIP 22 SOUTH, RANGE 6 WEST, W.M. DOUGLAS COUNTY, OR.
SCALE: 1" = 600' MAY 2002

NARRATIVE:

THIS SURVEY WAS CONDUCTED TO LOCATE AND MARK PROPERTY LINES BETWEEN EXISTING BLM MONUMENTS. WE INITIATED THIS SURVEY AT THE NORTHEAST CORNER OF SECTION 28 A BLM BCIP SET FROM ORIGINAL EVIDENCE. WE BEGAN A RANDOM TRAVERSE NEAR PROPERTY LINES SHOWN SOUTHERLY TO THE EAST 1/4 AND THEN WESTERLY TO THE WEST 1/4 OF SECTION 28, BOTH WHICH ARE COUNTY BCIP SET FROM ORIGINAL EVIDENCE. WE CONTINUED OUR RANDOM TRAVERSE FROM EACH END OF OUR MAIN TRAVERSE TO OPEN SKY AREAS FOR GPS TO CHECK OUR CLOSURE. THIS SURVEY WAS DONE WITH A NIKON DTM 450 TOTAL STATION WITH A TRIMBLE 4000 SI AND PRO XR GPS TO CHECK CLOSURE. I WAS ASSISTED IN THIS SURVEY BY GARY ANGIOLET, IGNACIO ROMAN, AND MARK DVORSCAK.

CORNER INFORMATION:

- 1) THE NORTHEAST CORNER OF SECTION 28
FOUND 1963 BLM BCIP IN GOOD CONDITION.
30" DOUGLAS FIR BEARS N70 1/4° W, 103.5 FEET (RECORD N71°W, 104.9) WELL HEALED FACE AND TAG.
38" DOUGLAS FIR BEARS S37 3/4° W, 60.2 (RECORD S38 1/2°W, 60.7) WELL HEALED FACE, NO TAG.
CORNER LIES ON SOUTH SLOPE APPROXIMATELY 150 FEET SOUTH OF ROCK ROAD AND 75 FEET NORTH OF SMALL DRAW. A LARGE THREADED ROD WITH NUT ALONGSIDE CORNER.
- 2) THE EAST 1/4 CORNER OF SECTION 28
FOUND 1961 COUNTY SURVEYOR'S CAP IN GOOD CONDITION.
-- 38" RED CEDAR BEARS S55 1/2°W, 19.7 FEET (RECORD S56°W, 20.0 FEET) WELL HEALED FACE AND TAG
-- 43" DOUGLAS FIR BEARS N25 3/4°E, 51.5 FEET (RECORD N26°E, 52.2 FEET) WELL HEALED FACE AND TAG
CORNER LIES ON STEEP NORTH SLOPE APPROXIMATELY 20 FEET SOUTH OF SMALL CREEK. CREEK RUNS NORTHWEST-SOUTHEAST.
- 3) THE WEST 1/4 CORNER OF SECTION 28
FOUND 1961 COUNTY SURVEYOR'S CAP IN GOOD CONDITION.
-- 26" RED CEDAR SNAG BEARS N23 1/2°W, 26.9 FEET (RECORD N22°W, 26.4 FEET) CHOPPED OUT FACE AND TAG
-- 40" RED CEDAR BEARS N87°W, 54.4 FEET (RECORD N87°W, 54.1 FEET) WELL HEALED FACE AND TAG
-- 10" DOUGLAS FIR BEARS N25°E, 16.4 FEET (RECORD N25°E, 16.8 FEET) WELL HEALED FACE, WE TAG
-- 7" DEAD DOUGLAS FIR BEARS S46°E, 10.5 FEET (RECORD S46°E, 10.9 FEET) WELL HEALED FACE, WE TAG
-- A ROOT HOLE AND VERY ROTTEN REMAINS OF A HEMLOCK FOUND AT APPROXIMATE RECORD BEARING AND DISTANCE (RECORD S20°E, 22.4 FEET)
-- 9" DOUGLAS FIR BEARS S54°E, 15.9 FEET, WE TAG TREE
CORNER LIES ON VERY GENTLE SOUTH SLOPE 80 FEET WEST OF THISTLEBURN CREEK ROCK ROAD AND 75 FEET EAST OF THISTLEBURN CREEK.



SEC.28 T.22 S. R. 6 W.

LEGEND

◆ FOUND COUNTY BRASS CAP
— LINES BLAZED, PAINTED, AND TAGGED THIS SURVEY

REGISTERED
PROFESSIONAL
LAND SURVEYOR

Ken W. Hoffine

OREGON
KEN W. HOFFINE
JULY 16, 1987
#2291

EXPIRES: 6-30-03

C.S. File No 65/44-15