

FILED

Date: 8-9-2001 By: JC

This survey consists of:

Map: M137-16

Narrative: \_\_\_\_\_

Corner Rpt: 65/37-15

OREGON CORNER RESTORATION FORM

Section 19 Township 27S Range 5W

County Douglas Date August 8, 2001

DOUGLAS COUNTY SURVEYOR

Corner Designation

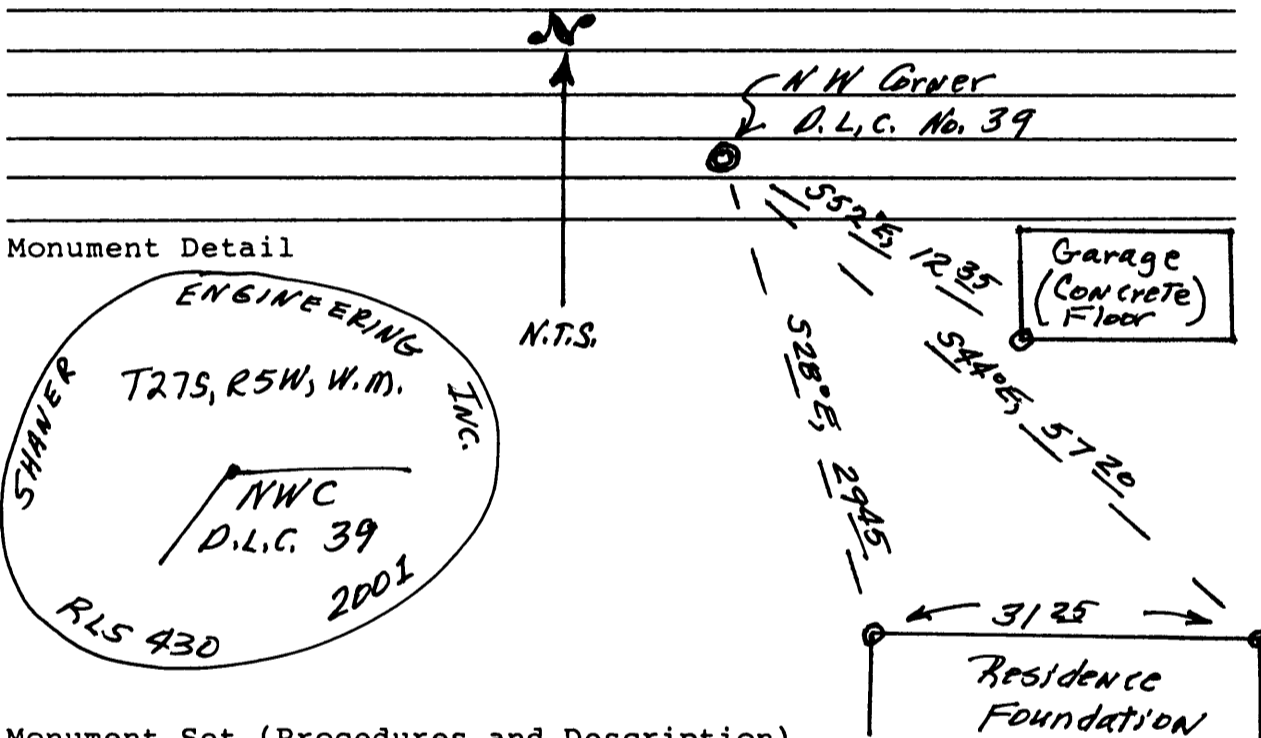
NW Corner Aaron Rose  
D.L.C. No. 39

- Condition Report Only
- Not Found
- Renewed
- Unrecorded
- Surveyed In
- Referenced Out

Previous Renewals/Surveys, etc. Corner re-established in 1938  
by Douglas County Surveyor & tied by Douglas County Surveyor  
in 1949, County Surveyor Map File M17-16.

Monument(s) & Accessories Found: (Condition and Source)

None Found. South Umpqua River Bank apparently  
eroded & rebuilt since 1949.



Monument Set (Procedures and Description)

Set 2 1/2" x 12" Alum. Pipe with 3/4" Alum. Cap,  
marked as above, in 150 lb. P.C. Concrete, as monument.  
Corner was reset in location as shown by County  
Surveyor Map File M17-16.

New Accessories

See above sketch with ties. (Giant Nutria  
from River are eating all local trees.)

Location & Comments

Corner on  
high bank of  
S. Umpqua River.

Compass Declination 20°E  
Firm/Agency Shaner  
Engineering, Inc.  
Address P.O. Box 1430  
Roseburg, Oregon 97470  
Party Chief B. Shaner  
Notes \_\_\_\_\_  
Witness Clem Berlier

Surveyor's Seal

REGISTERED  
PROFESSIONAL  
LAND SURVEYOR

Bruce A Shaner

OREGON  
OCT. 4, 1957  
BRUCE A. SHANER  
430

Renews June 30,  
2002