

OREGON CORNER RESTORATION FORM

Date: 6/6/2001 By: X

This survey consists of:

Section 28 Township 22S Range 6W

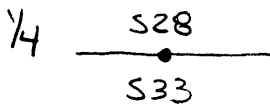
Map: _____

County DOUGLAS Date 6/1/01

Narrative: _____

Corner Rpt: 65/37-7

Corner Designation



- DOUGLAS COUNTY
Condition Report Only
- Not Found
 - Renewed
 - Unrecorded
 - Surveyed In
 - Referenced Out

Previous Renewals/Surveys, etc. _____

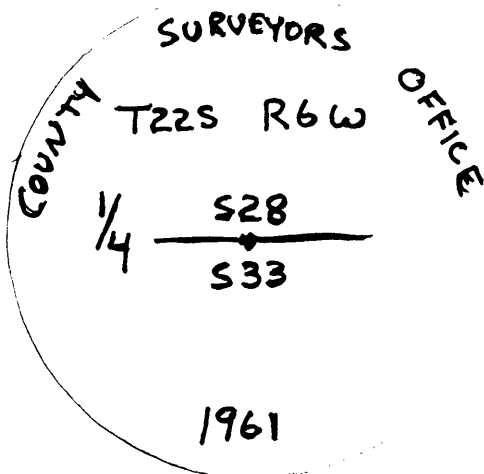
Monument(s) & Accessories Found: (Condition and Source)

FOUND 1961 DOUGLAS COUNTY BRASS CAP

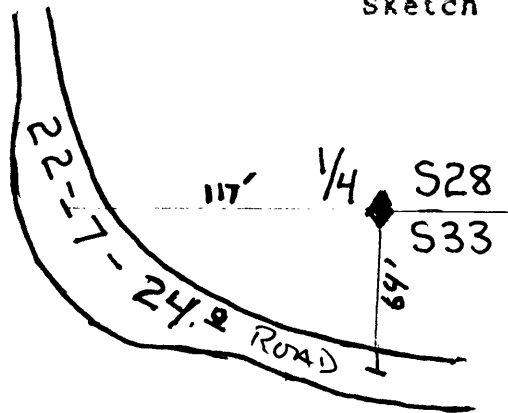
- 48" STUMP ROOTWAD WITH BLM TAG & CHOPPED OUT FACE BEARS N48°W APPROX 48' (MOVED BY TRACTOR)

- 16" CEDAR SWAG WITH VISIBLE SCRIBING AND BLM TAG BEARS N26 1/2°E 32° FULT AS PSE RECORD

Monument Detail



Sketch



Monument Set (Procedures and Description)

New Accessories

8" DOUGLAS FIR BEARS S50°W 22 1/2 FEET I SCRIBE 1/4 S33 BT AND TAG TREE

7" DOUGLAS FIR BEARS N25°W 4 1/8 FEET I SCRIBE 1/4 S28 BT AND TAG TREES

Location & Comments

CORNER LIES 0 1/2 FEET ABOVE GRASSY OLD FLAT BEACH 117 EAST AND 64 FEET SOUTH OF 24.9 ROAD

Compass Declination 19 1/2°
Firm/Agency LOWE ROUS TIMBER
Address P.O. Box 1127 ROSEBURG, OR 97502
Party Chief KEN HOFFINE
Notes KEN HOFFINE
Witness _____

Surveyor's Seal

REGISTERED PROFESSIONAL LAND SURVEYOR

Ken W Hoffine

OREGON JULY 16, 1987

KEN W. HOFFINE 2291

EXPIRES 6-30-01