

FILED

Date: 3-20-2001 By: JC

This survey consists of:

Map: _____

Narrative: _____

Corner Rpt: 65/36-24

OREGON CORNER RESTORATION FORM

Section 18 Township 31S Range 4W

County Douglas Date 12, Mar. 2001

DOUGLAS COUNTY SURVEYOR

Corner Designation

CC SW cor. 518

- Condition Report Only
- Not Found
- Renewed
- Unrecorded
- Surveyed In
- Referenced Out

Previous Renewals/Surveys, etc. _____

Monument(s) & Accessories Found: (Condition and Source)

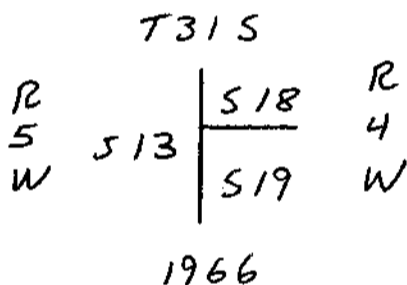
2 1/2" Douglas County Brass Cap

35" Incense Cedar bears S54°E 40 7/8 ft. beald face

14"x1' D. Fir stump bears N62 1/2°E 23 8/10 ft. beald face

Monument Detail

Sketch



Monument Set (Procedures and Description)

None

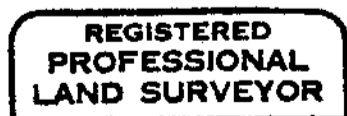
New Accessories

6" D. Fir bears S 25° W 28 3/4 ft. blazed and scribed at base "X BT"

Location & Comments

Surveyor's Seal

Gal. steel post set adjacent to cor Compass Declination _____
BT's have red painted band and face plus yellow BT tag Firm/Agency Ward Northwest Inc.
 Address P. O. Box 105 Florence OR 97439
 Party Chief Rob Ward
 Notes 00-11
 Witness Ron Rice



expires 6/30/02

C.S. File No. 65/36-24