

FILED

Date: 11/15/2000 By: X

This survey consists of:

Map: \_\_\_\_\_

Narrative: \_\_\_\_\_

Corner Rpt: 65/33-10

OREGON CORNER RESTORATION FORM

Section 24 Township 235 Range 7W

County Douglas Date Nov. 13, 2000

DOUGLAS COUNTY SURVEYOR

Corner Designation

|     |     |
|-----|-----|
| 514 | 513 |
| 523 | 524 |

- Condition Report Only
- Not Found
- Renewed
- Unrecorded
- Surveyed In
- Referenced Out

Previous Renewals/Surveys, etc. \_\_\_\_\_

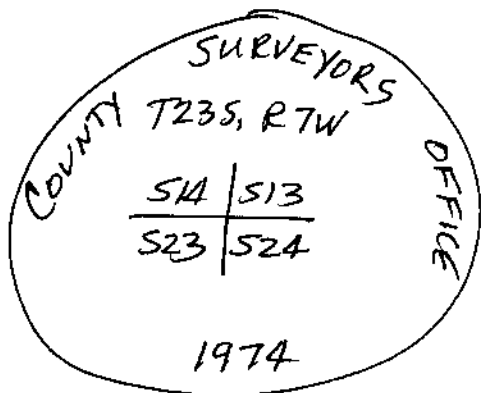
Douglas County Surveyor, 1974.

Monument(s) & Accessories Found: (Condition and Source)

Found 2" Brass Cap on a 3/4" Iron Pipe, from which a:  
60" D. Fir BT, face overgrown, bears S80°W, 19<sup>8</sup> feet.  
36" D. Fir BT, " " (Was 16"), bears N53°E,  
33<sup>0</sup> feet.  
18" D. Fir BT (was 7"), bears N89°E, 18<sup>6</sup> feet. (face 0/6.)  
10" W. Fir BT, face overgrown, bears N29°E, 7<sup>7</sup> feet.

Monument Detail

Sketch



Monument Set (Procedures and Description)

None.

New Accessories

12" W. Fir BT, I scribed "T235, R7W, 514, BT" bears  
N80°W, 9<sup>2</sup> feet.  
18" W. Fir BT, I scribed "T235, R7W, 524, BT"  
bears S34°E, 5<sup>8</sup> feet.

Location & Comments

None.

Compass Declination 20°E

Firm/Agency Shaner

Engineering, Inc.

Address P.O. Box 1430

Roseburg, Oregon 97470

Party Chief B. Shaner

Notes " "

Witness Claude McLean

David Snyder

Surveyor's Seal

REGISTERED  
PROFESSIONAL  
LAND SURVEYOR

Bruce Shaner

OREGON  
OCT. 4, 1957  
BRUCE A. SHANER  
430

Renews June 30, 2002

C.S. File No. 65/33-10