

FILED

Date: 7-20-2000 By: JP

This survey consists of:

Map: _____

Narrative: _____

Corner Rpt: CS 65/30-17

OREGON CORNER RESTORATION FORM

Section 14 Township 30S Range 9W

County DOUGLAS Date JULY 6, 2000

DOUGLAS COUNTY SURVEYOR

Corner Designation

14	13
23	24

- Condition Report Only
- Not Found
- Renewed
- Unrecorded
- Surveyed In
- Referenced Out

Previous Renewals/Surveys, etc.

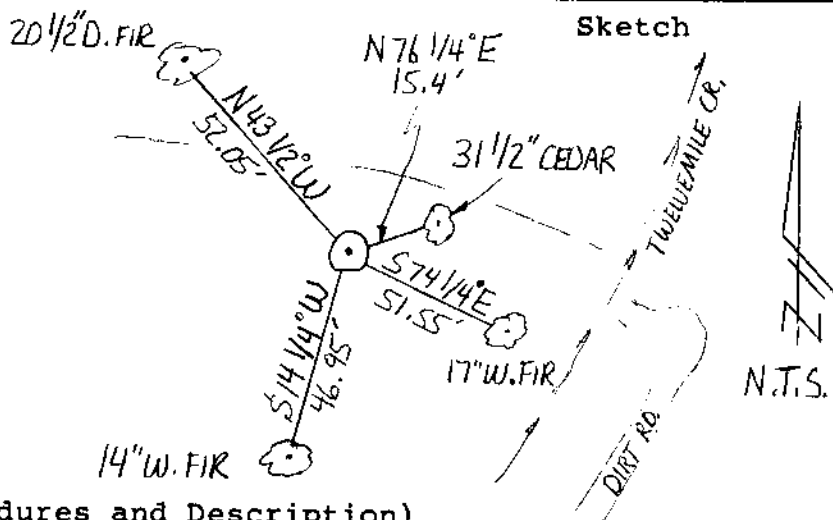
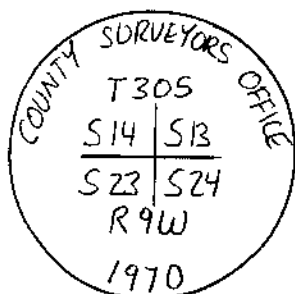
RENEWAL # 19 (SEE CS 51/163) - 1/7/61 & RENEWAL # 101 BY JOHN M. POWELL (SEE C.S. 53/53) - 9/10/70; FOUND BY BLM IN 1972 / 5 BEARING TREES

Monument(s) & Accessories Found: (Condition and Source)

AT THE CORNER POINT I FOUND A BRASS CAP AS SHOWN BELOW. EXISTING BEARING TREES FOUND PER THE 1970 RECORD ARE AS FOLLOWS:

D. FIR STUMP	N 52°W	38.4'
23" CEDAR	N 77°E	15.8'
7" W. FIR	S 15°W	47.3'
11" D. FIR	N 44°W	53.0'
8" W. FIR	S 75°E	51.4'

Monument Detail



Monument Set (Procedures and Description)

NONE

New Accessories * OUR MEASUREMENT TO PREVIOUS ACCESSORIES

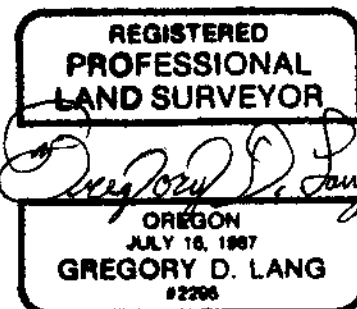
- * 17" W. FIR BEARS S 74 1/4° E 51.55' FROM B. CAP
- * 14" W. FIR BEARS S 14 1/4° W 46.95' FROM B. CAP
- * 20 1/2" D. FIR BEARS N 43 1/2° W 52.05' FROM B. CAP
- * 31 1/2" CEDAR BEARS N 76 1/4° E 15.4' FROM B. CAP

Location & Comments

SPIKES WERE SET IN THE SIDE & BOTTOM OF THE BOG. TREES FOR DISTANCE REFERENCE. CORNER LIES NEAR THE BOTTOM OF A SMALL DRAW WEST OF TWELEVMILE CREEK

Compass Declination 18°E
 Firm/Agency GREGORY D. LANG
 Address 7550 WILLIS CR. RD. WINSTON, OR. 97496
 Party Chief G. LANG, T. LANG
 Notes SAME
 Witness DAN CLIFFORD

Surveyor's Seal



EXPIRES 12-31-00

C.S. File No. 65/30-17

C. Ren # 169