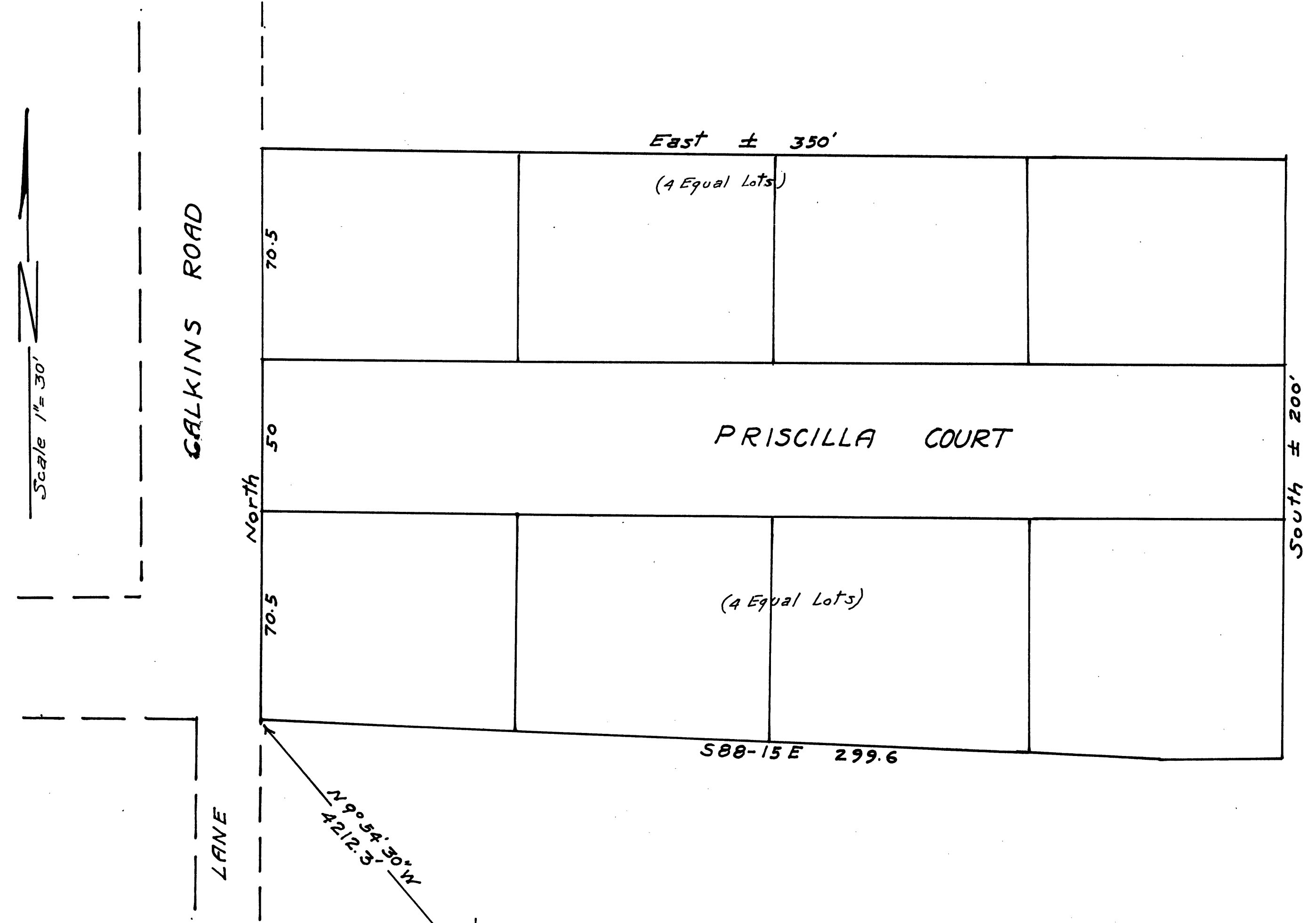


FILED  
Date: 5/10/99 By: nwr  
This survey consists of:  
Map: CS 65/26-4  
Narrative: \_\_\_\_\_  
Corner Rpt: \_\_\_\_\_

DOUGLAS COUNTY  
SURVEYOR

C.S. File No. 65/26-4

Scale 1" = 30'



GALKINS ROAD

East ± 350'

(4 Equal Lots)

70.5

50

North

70.5

S88-15 E 299.6

South ± 200'

(4 Equal Lots)

LANE

N 9° 54' 30" W  
4212.3'

SE Cor.  
John Lehnerr  
D.L.C. No. 52

C.S. File No. 65/26-4

UNRECORDED  
PRISCILLA HEIGHTS  
Subdivision  
Sec. 14 T27S R6W  
County Assessors Office