

FILED

Date: 11-30-1999 By: SC

This survey consists of:

Map: _____

Mapsheet: _____

Corner No. 65/23-17

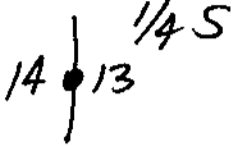
OREGON CORNER RESTORATION FORM

Section 13 Township 225 Range 6W

County Douglas Date Nov. 16, '99

DOUGLAS COUNTY
SURVEYOR

Corner Designation



- Condition Report Only
- Not Found
- Renewed
- Unrecorded
- Surveyed In
- Referenced Out

Previous Renewals/Surveys, etc.

Douglas County Surveyor's Office, Aug. 2, 1961

Monument(s) & Accessories Found: (Condition and Source)

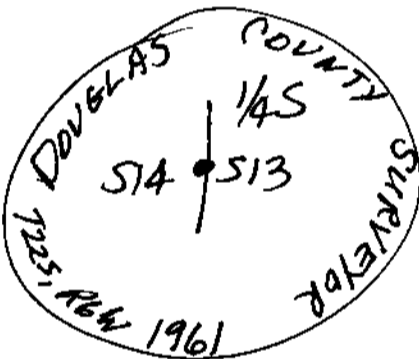
Found Brass Cap with corner rock alongside, from which a:
18" D. Fir BT (record 5") bears N20°E, 10° feet, face
overgrown.

12" Madrone BT (record 7"), face overgrown,
bears S82½°W, 11½ feet.

Corner is in fence corner. Fences bear
North, South & East.

Monument Detail

Sketch



Monument Set (Procedures and Description)

None.

New Accessories

None.

Location & Comments

Corner is at fence
line junction at SW
corner of clearing,
300 feet ± SW of
a fine home.

Compass Declination 20°E

Firm/Agency Shaner
Engineering, Inc.

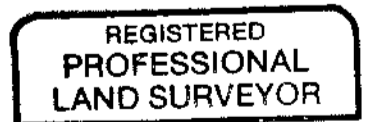
Address P.O. Box 1430
Roseburg, Oregon 97470

Party Chief B. Shaner

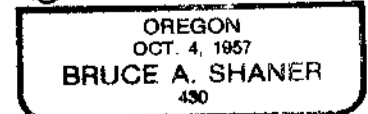
Notes " "

Witness Brad Cole

Surveyor's Seal



Bruce A Shaner



RENEW'S JUNE 30,
2000

C.S. File No. 65/23-17