

RESTORED CORNER

INDEX NO _____

CORNER: 1/4 CORNER, SECTIONS 2 & 11, T.26S., R.3W., W.M.

EVIDENCE RECOVERED: FOUND 3/4" DIAM. REBAR SET BY JAMES BYRON DEPUTY COUNTY SURVEYOR ON FEB. 24, 1955, C.S. FILE 46/105

34" FIR STUMP, N.78°E. 26.5' TO CENTER, WITH HEALED BLAZE, BY JAMES BYRON DEPUTY COUNTY SURVEYOR FEB. 24, 1955, C.S. FILE 46/105, 33" FIR S.26°W. 55.4' TO CENTER, WITH HEALED BLAZE, BY JAMES BYRON DEPUTY COUNTY SURVEYOR FEB. 24, 1955, C.S. FILE 46/105

CORNER SET: SET A 2 1/2" DIAM. DOUGLAS COUNTY BRASS CAP ATTACHED TO A 1" DIAM. IRON PIPE, 16" IN GROUND BUILT ROCK MOUND AROUND MONUMENT, THIS IS A REMONUMENTATION OF SAID 1/4 COR. SECTIONS 2 & 11 AS FOUND IN EVIDENCE OF THE 3/4" DIAM. REBAR.

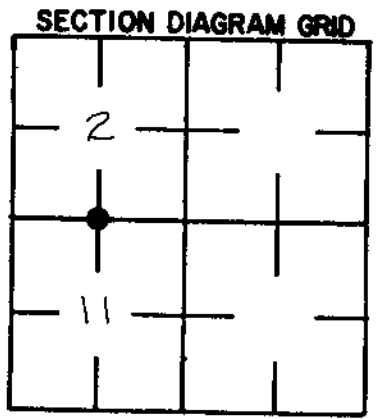
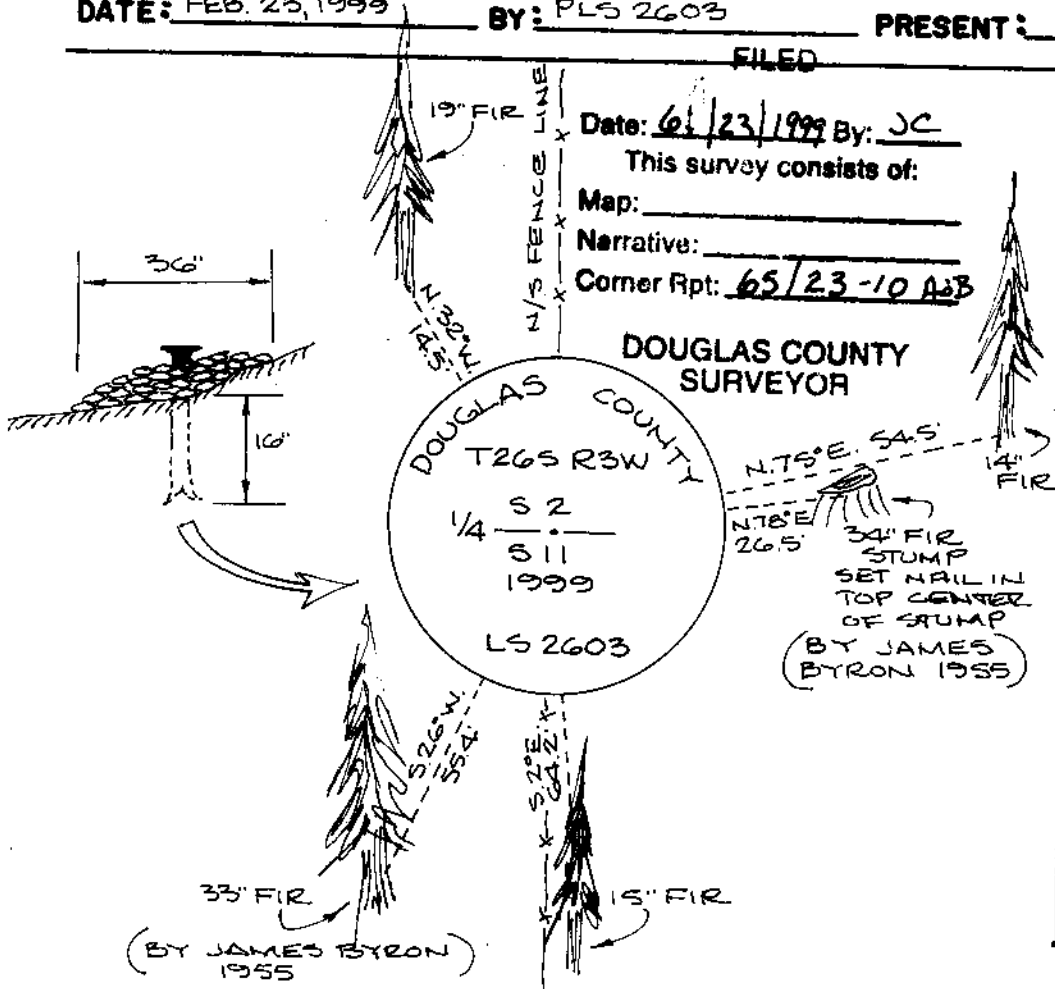
ACCESSORIES ESTABLISHED: 15" FIR S.2°E. 64.2' TO CTR. BLAZED & SCRIBED "1/4 S11 BT"
14" FIR N.75°E. 54.5' TO CTR. BLAZED & SCRIBED "1/4 S2 BT"
19" FIR N.32°W. 14.5' TO CTR. BLAZED & SCRIBED "1/4 S2 BT"

SPECIAL NOTE: THE 1976 COUNTY SURVEYORS BRASS CAP WAS FOUND AND I REMOVED MARKINGS, THIS BLANK BRASS CAP IS NOW A REFERENCE MARK TO THE ORIGINAL OLD 1/4 COR. POSITION, THE BLM CADASTRAL SURVEY OFFICE CONCURRED WITH MY DECISION IN REMONUMENTING.

NOTES AND OTHER INFORMATION: SET A STEEL "T" FENCE POST NORTH 2.0', THIS MONUMENT FALLS IN AN OLD NORTH/SOUTH FENCE LINE

DATE: FEB. 23, 1999 BY: HARVEY CHRISTENSEN PLS 2603 PRESENT: _____

FILED



SEAL

ORS 678-088
REGISTERED
PROFESSIONAL
LAND SURVEYOR

Harvey Christensen

OREGON
MARCH 16, 1993
HARVEY M CHRISTENSEN
2603

EXP 12-31-1999

C.S. File No. 65/23-10 A

RESTORED CORNER

INDEX NO. _____

FACES OF POST

CORNER 1/4 CORNER SECTIONS 2 & 11, T. 26 S., R. 3 W., W.M.G.L.O. NOTES DATED: JUNE 19, 1882 BY: SAMUEL C. FLINTCORNER: SET W. OAK POST 3' LONG, 3" SQUARE MARKED 1/4 S ON N & SACCESSORIES: W. OAK 15" BEARS S. 15° W. 40 LKS (26.4') MRKD "1/4 S BT"
MOUND OF STONE AROUND POST.REESTABLISHMENT NOTES DATED: JULY 1923 BY: J.W. COLE & C.W. SPRINGEREVIDENCE RECOVERED: LARGE MOUND STONE WITH STAKE, FOUND ORIGINAL
BT NEARLY DEAD, MARKS GONE

CORNER SET:

ACCESSORIES ESTABLISHED: RED FIR 24' BEARS N. 8° W. 26.0 FEETFIR 18" S. 46° E. 47.0 FEETREESTABLISHMENT NOTES DATED: FEB. 24, 1955 BY: JAMES BYRON DEPUTY COUNTY SURV.EVIDENCE RECOVERED: 3/4" IRON ROD & 3" x 3" SQUARE STAKE SCRIBED "1/4 S"IN MOUND STONE, THE N 8° W BT IS DOWN, THE S 46° E BT HAS BEEN CUT
BOTH CHECK FOR BEARING & DISTANCE

CORNER SET:

ACCESSORIES ESTABLISHED: 12" R. FIR S. 26° W. 55.4' MRKD. "1/4 S 11 CS BT"18" R. FIR N. 78 1/2° E. 26.5' MRKD. "1/4 S 2 CS BT"REESTABLISHMENT NOTES DATED: OCT/NOV. 1964 BY: BRUCE A. SHANEREVIDENCE RECOVERED: 24" D. FIR N 78 1/2° E. 26.5'19" D. FIR S. 26° W. 55.4'CORNER SET: SET 5/8" IRON ROD

ACCESSORIES ESTABLISHED: _____

REESTABLISHMENT NOTES DATED: FEB/MARCH 1960 BY: VERNON TRACY, COUNTY SURV.EVIDENCE RECOVERED: IRON ROD & BT'S OF RECORD AS FOLLOWS: 20" RED OFFICEFIR S. 26° W. 55.4' WITH BLAZES OPENED, 24" R. FIR N. 78 1/2° E. 26.5' WITHBLAZES HEALEDCORNER SET: SET BRASS CAP & ROCK MOUND AROUND COR. MONUMENT

ACCESSORIES ESTABLISHED: _____

CORNER FALLS IN FENCE LINE
RUNNING N. 10° W / S 10° EREESTABLISHMENT NOTES DATED: OCT. 1974 BY: GLENN BAUGHMANEVIDENCE RECOVERED: ORIGINAL CORNER POSITION, AS MONUMENTED BYDOUGLAS COUNTY BRASS CAP, WAS FOUND BUT NOT HELD.CORNER SET: 5/8" IRON ROD AT SINGLE PROPORTIONATE POSITIONACCESSORIES ESTABLISHED: 12" D. FIR BEARS N. 8° W. 24.0' SCRIBED "1/4 S 2 BT"24" D. FIR BEARS S. 8° E. 25.7' SCRIBED "1/4 S 11 BT"REESTABLISHMENT NOTES DATED: JUNE 8, 1976 BY: L.E. MORGAN, DEPUTY COUNTY SURV.EVIDENCE RECOVERED: FOUND 5/8" IRON ROD BY GLENN BAUGHMAN IN C.S. 59/21AND BT'S OF SAID C.S. 59/21CORNER SET: SET DOUGLAS COUNTY BRASS CAP IN PLACE OF FOUND 5/8" IRON RODACCESSORIES ESTABLISHED: BASIS OF REMONUMENTING SAID FOUND 5/8" IRONROD IS CIRCUIT COURT OF THE STATE OF OREGON DOUGLAS COUNTYDECREE #75-210