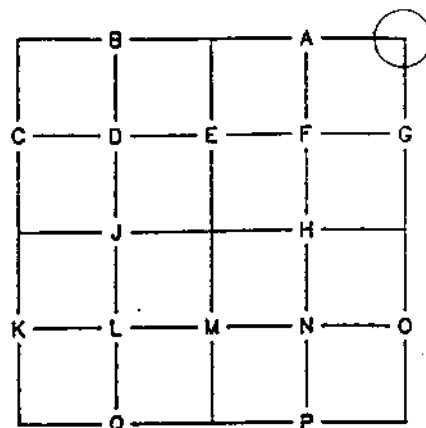


PUBLIC LAND CORNER

INDEX NO. _____

WEYERHAEUSER COMPANY WILLAMETTE REGION



TOWNSHIP 22S RANGE 4W
 SECTION 20 CORNER NE
 COUNTY Douglas OREGON

ORIGINAL CORNER DATED: 1856 BY: GLO
 CORNER: Post
 ACCESSORIES: 18" FIR N37E 106 lks 20" FIR S62E 36 lks
30" FIR S60W 84 lks 60" FIR N4 1/2 W 145 lks

REESTABLISHMENT NOTES DATED: 1928 BY: Douglas County
 EVIDENCE RECOVERED: OLD BT S60W 84 lks
OLD BT S62E 36 lks
OLD STUMP N 4 1/2 W 145 lks

CORNER SET: 4" X 6" X 42" Cedar post
 ACCESSORIES ESTABLISHED: 8" FIR N 61-10 E 41 lks ; 30" FIR S71-40 E 11 lks
36" FIR N 29-05 W 306 lks ; 60" FIR S58-25 W 84 lks

REESTABLISHMENT NOTES DATED: 1962 BY: LES CALDER - WEYERHAEUSER
 EVIDENCE RECOVERED: 20" FIR S62E 36 lks - rotten stump ; 54" FIR STUMP
S60E 84 lks ; 20" FIR N 61-10 E 41 lks ; 36" FIR S71-40 E 11 lks
45" FIR STUMP S 58-25 W 84 lks ; 42" FIR SNAG N 29-05 W 300 lks

CORNER SET: _____
 ACCESSORIES ESTABLISHED: 20" FIR N 60 E 27.4 FT. ; 36" FIR S 85 E 6.8 FT.
14" FIR S 21 W 29.2 FT. ; 14" FIR N 62 W 54.8 FT. ALL TO "W" NAILS

REESTABLISHMENT NOTES DATED: 1963 BY: U.S.B.L.M.
 EVIDENCE RECOVERED: STUMP HOLE S62E 36 lks ; FIR STUMP S60W 84 lks ; stump hole N 4 1/2 W
145 lks ; 20" FIR N 60 E 43 lks ; 36" FIR S 85 E 12 1/2 lks ; 42" FIR SNAG N 29 W 300 lks
14" Fir S 22 1/2 W 44 1/2 lks

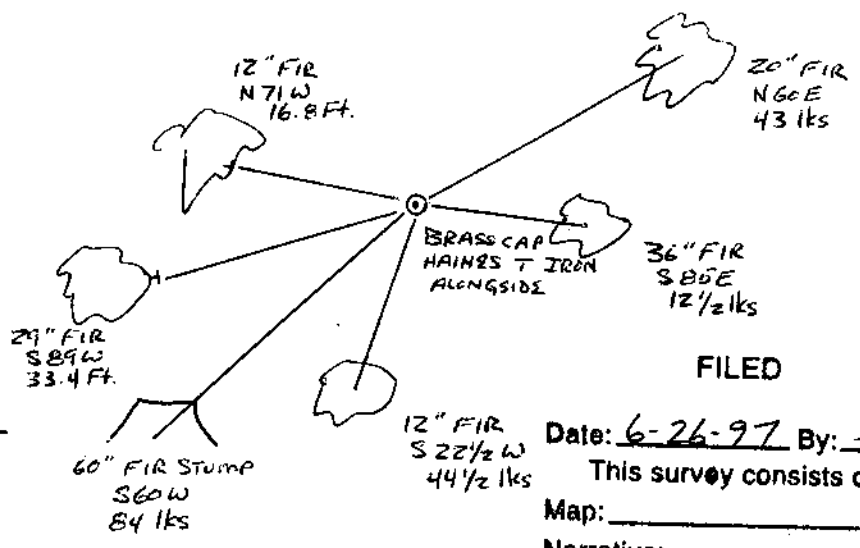
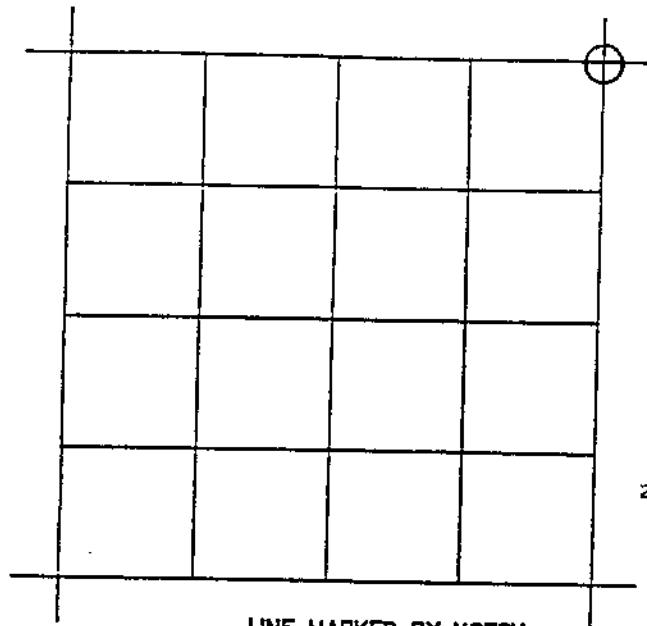
CORNER SET: 2 1/2" X 28" Iron Pipe w/ Brass Cap dated 1963 w/ HAINES "T" IRON ALONGSIDE
 ACCESSORIES ESTABLISHED: 14" FIR N 61 W 84 lks

REMONUMENTATION

DATE: 5/29/92 BY: David Wellman TITLE: PLS 2163 FIRM: Baker & Assoc.
 EVIDENCE RECOVERED: 1" T-IRON & 1963 B.L.M. Brass Cap
60" Fir stump S60W 84 lks, 20" Fir N 60 E 43 lks ; 36" Fir S 85 E 12 1/2 lks
14" Fir S 22 1/2 W 44 1/2 lks

CORNER SET: _____
 ACCESSORIES ESTABLISHED: 12" Fir 16.8 Ft. N 71 W to "W" nail
Scribed "T22S R4W S17 BT"

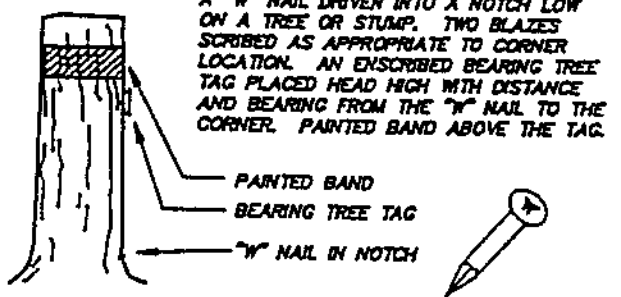
OTHER INFORMATION: 29" Fir S 89 W 33.4 Ft. to "W" nail
Scribed "T22S R4W S20 BT"
6 Ft. metal fence post 1 Ft. North



- LINE MARKED BY NOTCH CUT IN BLAZE
- KNOWN CORNER
- REFERENCED CORNER BY WEYERHAEUSER METHOD

FILED
 Date: 6-26-97 By: JP
 This survey consists of:
 Map: _____
 Narrative: _____
 SKETCH Corner Rpt: C.S. 65/15-2

DOUGLAS COUNTY
 SURVEYOR
 WEYERHAEUSER COMPANY
 CORNER REFERENCE METHOD



A "W" NAIL DRIVEN INTO A NOTCH LOW ON A TREE OR STUMP. TWO BLAZES SCRIBED AS APPROPRIATE TO CORNER LOCATION. AN ENSCRIBED BEARING TREE TAG PLACED HEAD HIGH WITH DISTANCE AND BEARING FROM THE "W" NAIL TO THE CORNER. PAINTED BAND ABOVE THE TAG.

IDENTIFIED ON PHOTO: _____

INFORMATION ON CORNER AS NOW SET
 GROUND COVER: Fir and Hemlock and maple to \swarrow to west; reprod & blackberries to east
 SLOPE FACE (BEARING) _____ (-) _____ %

FROM CORNER	NORTH	-6%
	SOUTH	+6%
	EAST	-4%
	WEST	+4%

BY: DAVID WELLMAN DATE: 5/29/97
 FIRM: BAKER AND ASSOCIATE'S 1385 Oak St. Suite 3
 ASSISTED BY: DAVE GRANMS Eugene, OR
JOE GOYETTE
 COPIES TO: DOUGLAS CO.

ORS 672-025

REGISTERED PROFESSIONAL LAND SURVEYOR

David Wellman

OREGON JULY 1995
 DAVID H. WELLMAN
 2163

Expires 6/30/98