

Date: 5/20/97 By: JP

This survey consists of:

Map: C.S. 65/13-8

Narrative:

Corner Rpt:

# CORNER RENEWAL MAP

DOUGLAS COUNTY  
JP SURVEYOR

LONE ROCK TIMBER CO.

PO BOX 1127 ROSEBURG OREGON 97470 DATE: APRIL 1997  
SECTION 32, TOWNSHIP 22 SOUTH, RANGE 6 WEST, W.M. DOUGLAS COUNTY, OREGON  
JUNIPER PROPERTIES TRACT J22-6-32 SCALE 1" = 1000'

## NARRATIVE

THIS SURVEY WAS CONDUCTED TO ESTABLISH PROPERTY LINES FOR TIMBER CUTTING PURPOSES. WE INITIATED THIS SURVEY AT THE EAST 1/4 OF SECTION 32 WHICH IS A HAINES T-BAR SET FROM ORIGINAL EVIDENCE. WE BEGAN A RANDOM TRAVERSE WESTERLY TO THE WEST 1/4 OF SECTION 32, A HAINES T-BAR SET FROM ORIGINAL EVIDENCE. WE CONTINUED OUR TRAVERSE NORTHEASTERLY TO THE NW 1/16, CN 1/16 AND NE 1/16, ALL T-BARS SET BY HAINES THEN SOUTHEASTERLY TO CLOSE OUR TRAVERSE AT THE E 1/4. WE MARKED THE PROPERTY LINES AS SHOWN HEREON BASED ON OUR CALCULATIONS OF TRUE LINE BETWEEN THE FOUND MONUMENTS. THIS SURVEY WAS DONE WITH A NIKON DTM 450 TOTAL STATION WITH GARY ANGIOLET, JERRY RAGON AND PAT KELLY ASSISTING ME.

## CORNER INFORMATION

THE FOLLOWING IS A RECORD OF ALL CORNERS FOUND DURING THE COURSE OF THIS SURVEY.

- 1) 1/4 CORNER BETWEEN SECTIONS 32 AND 33  
FOUND: HAINES T-BAR 0.8 FEET ABOVE GROUND.  
-- 38" DOUGLAS FIR BEARS S44 3/4"E, 32.7 FEET (RECORD S45"E, 34.3 FEET) FACE HAS BEEN CHOPPED OUT, BLM TAG  
-- 22" DOUGLAS FIR 20" TALL SNAG BEARS N13 1/4"W, 17.4 FEET (RECORD N13"W, 17.8 FEET) WELL HEALED FACE WITH BLM TAG  
CORNER LIES ON AN EASTERLY SLOPE APPROXIMATELY 200' WEST OF CREEK.
- 2) 1/4 CORNER BETWEEN SECTIONS 31 AND 32  
FOUND: HAINES T-BAR 0.5 FEET ABOVE GROUND.  
-- 36" DOUGLAS FIR STUMP BEARS S77 1/2"W, 53.6 FEET (RECORD S79"W, 55.4 FEET) VISIBLE SCRIBING WITH BLM TAG  
-- 20" DOUGLAS FIR BEARS N27 3/4"W, 12.6 FEET (RECORD N32"W, 13.5 FEET) WELL HEALED FACE WITH BLM TAG  
-- 42" DOUGLAS FIR STUMP BEARS N44 3/4"E, 13.1 FEET (RECORD N39"E, 13.2 FEET) WELL HEALED FACE WITH LRT TAG  
CORNER LIES ON A STEEP WEST FACING SLOPE APPROXIMATELY 150 FEET EAST OF DRAIN.
- 3) NORTHWEST 1/16 SECTION 32  
FOUND: HAINES T-BAR 1.0 FEET ABOVE GROUND.  
-- 40" DOUGLAS FIR BEARS EAST 3.5 FEET BARK SCRIBING VISIBLE WITH OLD BT TAG  
CORNER LIES ON STEEP EAST SLOPE.
- 4) CENTER NORTH 1/16 SECTION 32  
FOUND: HAINES T-BAR 0.7 FEET ABOVE GROUND.  
-- 16" DOUGLAS FIR BEARS N3"E, 44.7 FEET, WE SCRIBED CN 1/16 S32 B.T. AND TAGGED  
-- 25" DOUGLAS FIR BEARS N53"E, 45.4 FEET, WE SCRIBED CN 1/16 S32 B.T. AND TAGGED  
CORNER LIES APPROXIMATELY 50' EAST OF DRAIN AND 120 FEET WEST OF RIDGE.
- 5) NORTHEAST 1/16 SECTION 32  
FOUND: HAINES T-BAR 1.0 FEET ABOVE GROUND.  
-- 49" DOUGLAS FIR STUMP BEARS N33 1/2"E, 99.2 FEET (RECORD N33'40"E, 99.5 FEET) WELL HEALED FACE WITH BLM TAG  
-- 31" DOUGLAS FIR STUMP BEARS N15 1/4"W, 99.7 FEET (RECORD N15"W, 100.0 FEET) WELL HEALED FACE AND BARK SCRIBING WITH BLM TAG  
CORNER LIES ON BOTTOM EDGE OF OLD SKID ROAD AND IS APPROXIMATELY 80 FEET EAST OF GRAVEL ROAD.

REGISTERED  
PROFESSIONAL  
LAND SURVEYOR

*Ken W. Hoffine*

OREGON  
JULY 16, 1987  
KEN W. HOFFINE  
2281

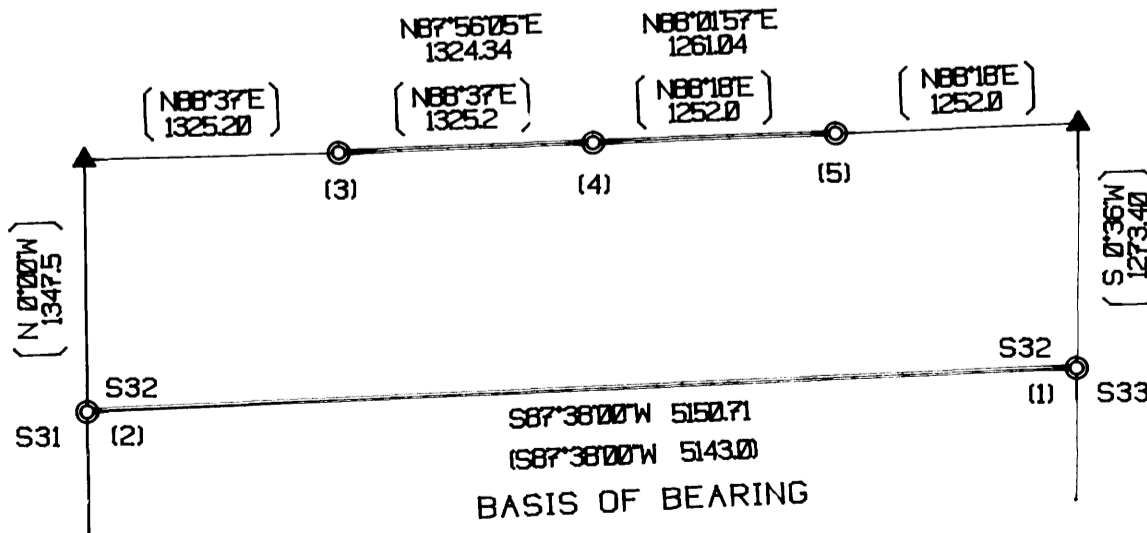
EXPIRES 6-30-97

## LEGEND:

- ⊙ - FOUND MONUMENT
- ▲ - CALCULATED POINT
- - LINES FLAGGED, BLAZED & TAGGED
- - PROJECTED SURVEY LINES
- ( ) - WILFORD HAINES SURVEY MAP M13 - 66



BASIS OF BEARING  
FROM MAP 13 - 66



COUNTY SURVEYORS FILE DATA  
DO NOT REMOVE FROM OFFICE