

David A. Edwards - Professional Land Surveyor

P.O. Box 41
Oakland, OR 97462



(541) 459-0512

SURVEY NUMBER M 126 - 45

SURVEY NARRATIVE TO COMPLY WITH CHAPTER 209, PARAGRAPH 250,
OREGON REVISED STATUTES

SURVEY FOR: Roseburg Resources
P.O. Box 1088
Roseburg, Oregon 97470

LOCATION: In Section 12, T. 25 S., R. 7 W., W.M. in Douglas
County, Oregon.

PURPOSE: To locate and monument certain boundaries in and
around Section 12 as shown on the accompanying
map.

PROCEDURE: A series of looped control traverses were
executed which tied in the necessary controlling
corner monuments. After prudent adjustment the
random points were then offset to true line and
the true line was blazed on each side and steel
posts were set along the line. Red flagging was
placed along all blazed lines and the blazes
painted yellow. A thorough search was made for
original evidence of the West 1/4 corner to no
avail. This corner was therefore proportioned as
shown. Section 12 was subdivided pursuant to the
1973 B.L.M. Manual of Instructions. Monuments set
on this survey consist of 5/8" x 30" steel pins
with an aluminum cap mkd. "Roseburg Resources
Company" and "LS 2339" together with the stamped
information called for in said Manual. Bearing
trees are scribed according to said Manual, are
measured to the center of tree at root crown and
are situated as follows:

At the West 1/4 Corner of Section 12:
Corner falls on the West face of a large boulder.
Set a witness monument S.85°52'07"E., 6.35 ft.
from true cor. and add marks W.M. to cap. From
the true corner:

A 14" diam. Fir bears N. 6° E., 40.06 feet.
A 6" diam. Fir bears S. 30° E., 35.55 feet.
A 10" diam. Fir bears S. 26° W., 51.34 feet.
An 8" diam. Fir bears N. 60° W., 44.39 feet.

At the South 1/16 Cor. to Sections 11 and 12:

A 13" diam. Fir bears N. 78° E., 21.82 feet.
A 10" diam. Fir bears S. 16° W., 6.10 feet.

At the SW 1/16 Corner of Section 12:

An 8" diam. Fir bears N. 60° E., 10.59 feet.
A 10" diam. Fir bears N. 67° W., 17.50 feet.

David A. Edwards - Professional Land Surveyor

P.O. Box 41
Oakland, OR 97462



(541) 459-0512

At the CW 1/16 Corner of Section 12:

A 16" diam. Fir bears S. 29° E., 8.34 feet.
A 7" diam. Fir bears S. 20° W., 13.75 feet.

At the Center 1/4 Corner of Section 12:

Corner falls in a large root wad West of logging road. Set witness monument N.0°29'00"W., 7.12 ft. from true corner and add marks W.M. to cap. From the true corner:

A 5/8" x 30" steel pin w/red plastic cap mkd. "D.A. EDWARDS-LS 2339" bears N.20°02'06"E., 20.07 feet on West edge road.

A 5/8" x 30" steel pin w/red plastic cap mkd. "D.A. EDWARDS-LS 2339" bears S.59°12'06"E., 16.53 feet on West edge road.

A 13" diam. Fir brs. S.49°42'30"W., 33.31 ft.
A 10 diam. Fir brs. N.10°54'26"W., 34.12 ft.

At the CE 1/16 Corner of Section 12:

A 7" diam. Fir bears N. 1° E., 4.43 feet.
A 9" diam. Fir bears S. 44° E., 16.08 feet.

At the East 1/16 Cor. to Sections 12 and 13:

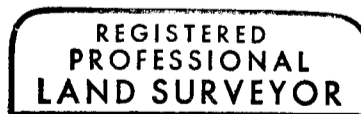
A 27" diam. Fir bears S. 30° E., 21.15 feet.
A 22" diam. Fir bears S. 88° E., 38.80 feet.

Except at the Center 1/4 corner bearings were measured with hand compass with declination set at 18° East

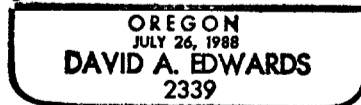
BASIS OF BEARINGS: South line SW 1/4 Sec. 12 per M 124-3.

EQUIPMENT: Nikon DTM-A10LG Electronic Total Station.

DATE COMPLETED: February 28, 1997.



David A. Edwards



Expires 12/31/97

FILED

Date: 3-7-97 By: JP

This survey consists of:

Map: M126-45

Narrative: C.S. 65/12-3A+B

Corner Rpt: _____

DOUGLAS COUNTY
SURVEYOR

C.S. File No. 65/12-3B