

GOVERNMENT CORNER RESTORATION FORM

Date: 11-5-96 By: JP

Township 31S Range 7W Sec. 26 County DOUGLAS This survey consists of:

State OK Date 9-4-96 No. _____ Map: _____

Corner Designation

S27 | S26
S34 | S35

Corner Rpt: 65/9-7

DOUGLAS COUNTY, SURVEYOR

- Condition Report Only
- Not Found
- Renewed
- Unrecorded
- Surveyed In
- Referenced Out

Previous Renewals 1961 JOHNSTONE, 1964 BLM

Monument(s) Found: (Condition and Source)

3/4" DIA. BRASS CAP ON A 2 1/2" O.D. IRON PIPE, PROTRUDES 5" ABOVE GROUND. (1964 BLM)

1" I.D. IRON PIPE PROTRUDES 6" ABOVE GROUND ALONG NE EDGE OF BC/IP. (1961 JOHNSTONE)

U.S. CADASTRAL SURVEY
T 31S R 7W

S27 | S26

S34 | S35

1964

BUREAU OF LAND MANAGEMENT

Accessories Found:

24" NOW 22" DIA 2 FT HIGH ROTTED MADRONE STUMP, PREVIOUSLY OPENED NOW ROTTED BLAZE, NO SCRIBING VISIBLE, BEARS S 33° E, 35.6 FT (AGREES WITH REC.) OST

44" DIA FIR NOW ROOT HOLE NEAR REC "S 85° W, 13.2 FT" OST

24" DIA. NOW ROTTED REMAINS OF A D. FIR OF INDETERMINABLE SIZE, BEARS N 15° W 6.6 FT (AGREES WITH 1964 BLM REC.) OST

NO EVIDENCE OF ORIG NE BT FOUND.

20" NOW 28" DIA 3 FT HIGH PINE STUMP WITH A FULLY HEALED BLAZE WE OPEN AND FIND SCRIBING "BT" BEARS N 78° E, 35.5 FT (REC N 80 3/4° E 35.5 FT) 1961 JOHNSTONE

12" NOW 15" DIA. 20 FT HIGH CEDAR SNAG WITH BURNT OUT DOUBLE BLAZE, BEARS N 83 1/2° W, 19.4 FT (REC N 83 1/2° W, 20.5 FT. IS A SLOPE MEASUREMENT) 1961 JOHNSTONE

4" FIR FROM 1961 JOHNSTON RENEWAL BEARING "S 25 1/2° W, 17.5 FT" NOW GONE.

14" NOW 24" DIA 5' HIGH PINE STUMP WITH A FULLY HEALED BLAZE, BEARS S 8 1/2° E, 20.0 FT (AGREES WITH REC.) 1961 JOHNSTONE

G.S. File No. 65/9-7

RENEWAL

Monument Set (Procedure and Description)

Monument Detail

N/A

N/A

657

799 @ 23 25

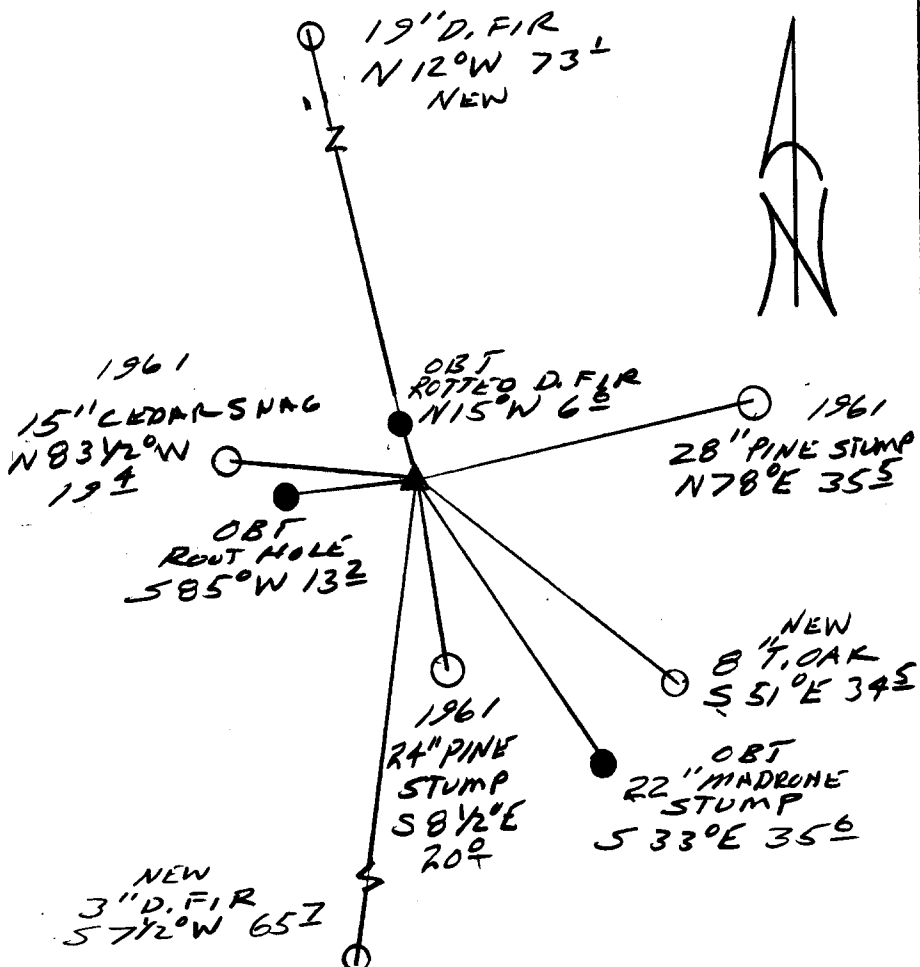
New Accessories

3" DIA. PISTOL BUTT D. FIR DOUBLE BLAZE AND SCRIBED "X BT"
BEARS S 7 1/2° W, 65.7 FT TO CENTER OF PLUMB TRUNK

19" DIA. D. FIR DOUBLE BLAZED AND SCRIBED "T315 R7 W S 27 CS BT"
BEARS N 12° W, 73.1 FT

8" TAN OAK DOUBLE BLAZED AND SCRIBED "T315 R7 W S 35 CS BT"
BEARS S 51° E, 34.5 FT

Sketch of Monument, Accessories, and General Area



Location & Comments

Comp. Declin. 17 3/4° E
Agency DLSO
Party Chief RANDALL W SMITH
Notekeeper Randall W Smith
Witnesses STEPHEN T FLAISE

Address

REGISTERED **Surveyor's Seal**
PROFESSIONAL
LAND SURVEYOR
Randall W. Smith
EXPIRES 6-30-98
OREGON
JULY 25, 1990
RANDALL W. SMITH
2469