

Date: 9.5.96 By: PC

GOVERNMENT CORNER RESTORATION FORM

This survey consists of:

Township 31S Range 6W Sec. 30 County DOUGLAS

Map: _____

State OR Date 8-27-96 No. _____

Narrative: _____

Corner Rpt: 65/9-1

Corner Designation

DOUGLAS COUNTY SURVEYOR

S25|S30
S36|S31

- Condition Report Only
- Not Found
- Renewed
- Unrecorded
- Surveyed In
- Referenced Out

MONUMENT DETAIL

Previous Renewals BYARS 1882, 1961 JOHNSTONE, 1966 DCSG PI 100200

Monument(s) Found: (Condition and Source)
2 1/2" DIA. BRASS CAP ON A 1 1/2" O.D. IRON PIPE, PROTRUDES 19" ABOVE GROUND (1966 DCSG)

COUNTY SURVEYORS OFFICE

1" I.D. IRON PIPE PROTRUDES 5" ABOVE GROUND (1961 JOHNSTONE?) FD ALONG NORTH EDGE OF BC/IP

T 31S R 6W
S25|S30
S36|S31
R 7W
1966

Accessories Found:

6" MAORONE NOW ROOT HOLE BEARS N 20°E, 7.3 FT 1882 NO OTHER RT'S FROM 1882 FOUND

8" NOW 13" DIA. D. FIR WITH A FULLY HEALED SINGLE BLAZE, BEARS S 18°E 24.0 FT (AGREES WITH REC.) 1961

20" NOW 24" DIA. 6 FT HIGH D. FIR STUMP WITH A FULLY HEALED DOUBLE BLAZE, BEARS S 57°W, 32.5 FT (AGREES WITH REC.) 1961

6" NOW 13" DIA. D. FIR WITH A FULLY HEALED DOUBLE BLAZE BEARS N 78°E, 38.0 FT (AGREES WITH REC.) 1961

16" NOW 18" DIA. 6 FT HIGH D. FIR STUMP WITH A FULLY HEALED DOUBLE BLAZE BEARS N 46 1/2°W, 57.0 FT (AGREES WITH REC.) 1961

C.S. File No. 65/9-1

RENEWAL

Monument Set (Procedure and Description)

Monument Detail

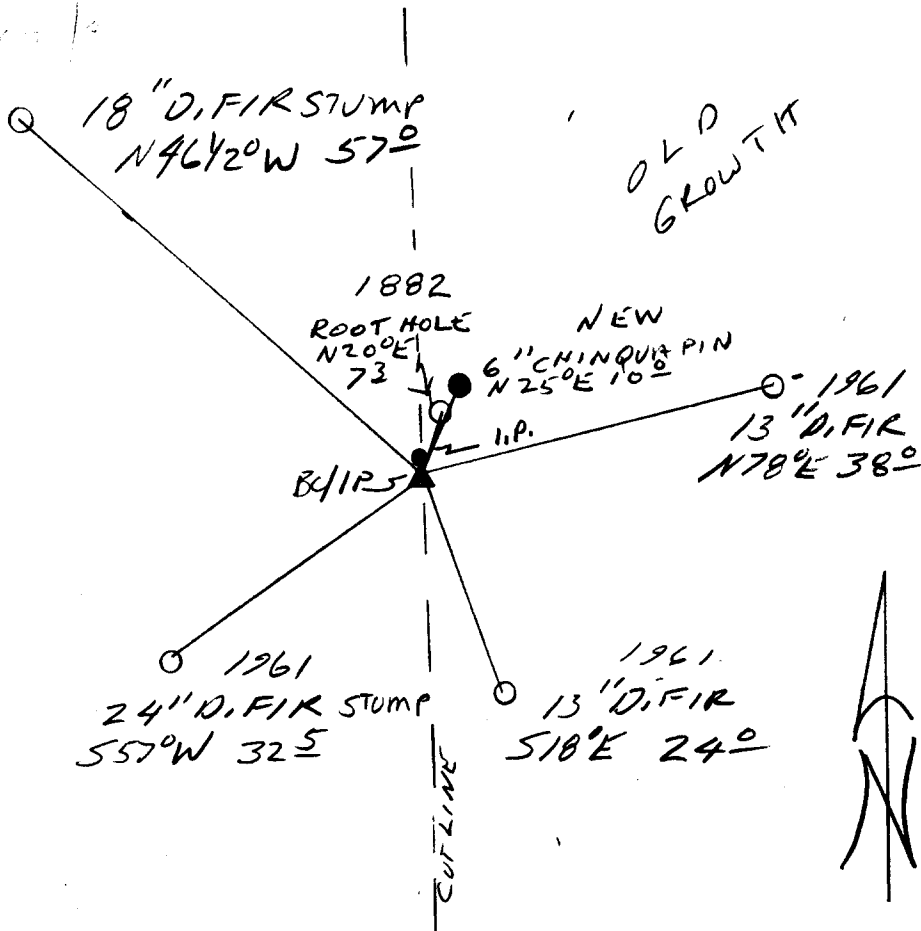
N/A

N/A

New Accessories

6" DIA. CHINQUAPIN DOUBLE BLAZED AND SCRIBED "T315 R6WS 30 CS BT"
BEARS N 25° E, 10.0 FT

Sketch of Monument, Accessories, and General Area



Location & Comments

Comp. Declin. 17 3/4° E
 Agency DCSO
 Party Chief RANDALL W SMITH
 Notekeeper Randall W Smith
 Witnesses STEPHEN J FLAUSK

Address

Surveyor's Seal

REGISTERED
 PROFESSIONAL
 LAND SURVEYOR

Randall W Smith
 EXPIRES 12-30-98

OREGON
 JULY 25, 1990
 RANDALL W. SMITH
 2469