

FILED

OREGON CORNER RESTORATION FORM

Date: 3/19/96 By: RBC

Section 21 Township 30S Range 5W

This survey consists of:

County DOUGLAS Date 12/28/95

Map: _____

Narrative: _____

Corner Rpt: CS 65/2-5

Corner Designation

T. 30 S., R. 5 W.

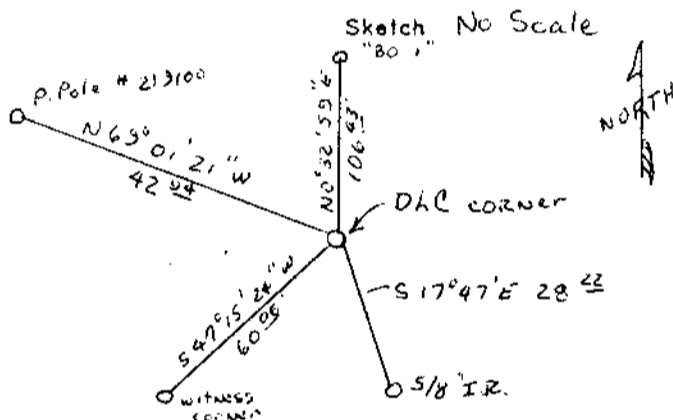
N.W. COR.
DLC # 51

- Condition **DOUGLAS COUNTY**
- Not Found **SURVEYOR**
- Renewed
- Unrecorded
- Surveyed In
- Referenced Out

Previous Renewals/Surveys, etc. RENEWAL FOR P.L.S.S. # 048070
SEE SURVEY FILE NUMBERS M 98-36 and M 81-41.

Monument(s) & Accessories Found: (Condition and Source) AT CORNER POINT, FOUND 1 INCH IRON PIPE. ACCESSORIES FOUND WERE: DCSO BRASS CAP WITNESS CORNER WHICH BEARS S 47° 15' 24" W 60.06 FEET (RECORD S 47° 15' 24" W 60.26 FEET). A 3 INCH DCSO BRASS CAP, MKD. " BO, 1, 1992 ", BEARS N 0° 32' 59" E 106.43 FEET (RECORD NORTH 106.3 FEET). THE EXISTING BEARING TREES WERE DESTROYED AND NOT FOUND. THIS CORNER WAS REMOVED DUE TO ROAD CONSTRUCTION.

Monument Detail



Monument Set: (Procedures and Description) USED " 5/8 INCH IRON ROD REFERENCE LINE " EAST OF CORNER (SEE SURVEY FILE # CO. RD. 35A). RESET SAID 1 INCH IRON PIPE WITH A 2" X 36" IRON PIPE WITH 3 INCH BRASS CAP ATTACHED. SAID BRASS CAP WAS SET 2 INCHES BELOW GRAVEL SURFACE.

New Accessories FROM RESET D.L.C. CORNER, A POWER POLE # 219100 BEARS N 69° 01' 21" W 42.94 FEET. A 5/8 INCH IRON ROD BEARS S 17° 47' 00" E 28.22 FEET. (STA. P.C. 20+75.79).

Location & Comments
USED RECORD BEARING FROM WITNESS CORNER TO D.L.C. CORNER AS " BASIS OF BEARING " PER 1976 RENEWAL. CORNER FALLS IN GRAVEL TURNOUT.

Compass Declination N.A.
Firm/Agency RAYMOND F. BROWN - PLS # 2391
Address P.O. BOX 539 CANYONVILLE, OR.
Party Chief R. BROWN
Notes S. SCHOONHOVEN
Witness D. JONES

Surveyor's Seal

REGISTERED PROFESSIONAL LAND SURVEYOR

OREGON
JULY 26, 1989
RAYMOND F. BROWN
2391

EXP. 12/31/97

CS. File No. 65/2-5