

CORNER RENEWAL MAP

FILED

LONE ROCK TIMBER CO.

PO BOX 1127 ROSEBURG OREGON 97470 DATE: JAN. 1996
 SECTION 30, TOWNSHIP 22 SOUTH, RANGE 6 WEST, W.M. DOUGLAS COUNTY, OREGON
 JUNIPER PROPERTIES TRACT J22-6-30 SCALE 1" = 500'

Date: 2-13-96 By: JC
 This survey consists of:
 Map: _____
 Narrative: _____
 Corner Rpt: CS 65/2-3

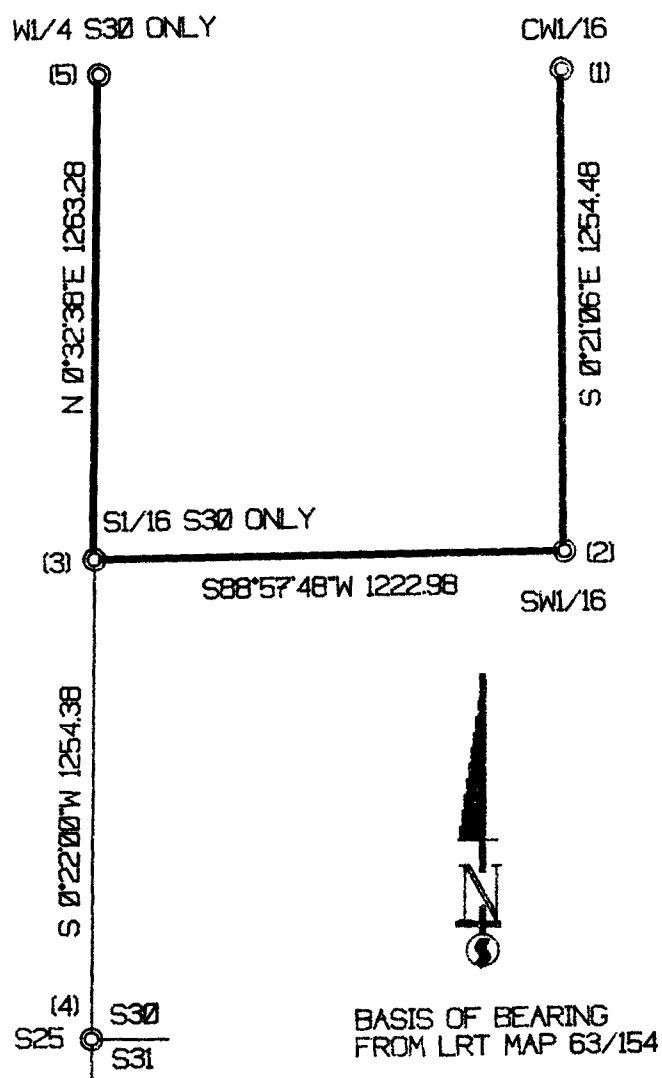
DOUGLAS COUNTY
 SURVEYOR

NARRATIVE

THIS SURVEY WAS CONDUCTED TO ESTABLISH CONTROL OF FOUND MONUMENTS FROM WILFORD HAINES' SUBDIVISION OF T22S, R6W, SECTION 30. HAINES INITIALLY SUBDIVIDED SECTION 30 AND SUBMITTED IN 1955 MAP M2-13. COUNTY SURVEYORS RESET THE WEST 1/4 AND NORTHWEST CORNER OF SECTION 30 FROM ORIGINAL EVIDENCE AT LOCATIONS DIFFERENT THAN HAINES' LOCATION FOR THESE CORNERS. EVIDENTLY HAINES RECOMPUTED HIS SUBDIVISION BASED ON THE CORRECT CONTROLLING CORNERS AND RESET THE INTERIOR 1/16 CORNERS FOR WHICH ONLY THE WEST 1/16 BETWEEN SECTIONS 19 AND 30 COULD BE FOUND IN HAINES BOOK #109 COUNTY SURVEYORS RECORD. WE CONTINUED OUR SURVEY OF CS FILE NO. 63/154 BEGINNING AT THE CENTERWEST 1/16 FOR SECTION 30. HAINES T-BAR HE RESET CORRECTLY, TRAVERSING SOUTHERLY TO THE SOUTHWEST 1/16 FINDING BOTH HAINES ORIGINAL AND RESET T-BAR MONUMENTS. WE THEN CONTINUED WESTERLY TO THE SOUTH 1/16 ON THE WEST LINE OF SECTION 30. HAINES RESET CORRECT T-BAR CLOSING INTO OUR PERMANENT TRAVERSE POINTS ALONG THE SECTION LINE. PROPERTY LINES WERE BLAZED AND FLAGGED AS SHOWN ON THIS MAP. THIS SURVEY WAS DONE WITH A LIETZ SET 2 TOTAL STATION WITH GARY ANGIOLET, JERRY RAGON AND IGNACIO ROMAN ASSISTING ME.

CORNER INFORMATION

- 1) THE CENTERWEST 1/16 CORNER OF SECTION 30
 FOUND HAINES T-IRON FOR TRUE CW 1/16 AND HAINES T-IRON FROM RECORDED SURVEY.
 -- 56" DOUGLAS FIR BEARS S21°20'W, 35.8 FEET FROM THE TRUE CW 1/16, WELL HEALED FACE
 -- 30" DOUGLAS FIR HIGH SLOPED STUMP BEARS N50°W, 63.4 FEET TO TRUE CW 1/16, WELL HEALED FACE
 -- FROM TRUE CW 1/16 TO RECORDED T-IRON IS N43°10', 27.2 FEET
 THIS CORNER LIES ON EDGE OF CLEARCUT APPROXIMATELY 70 FEET SOUTH OF DIRT RIDGETOP ROAD.
- 2) THE SOUTHWEST 1/16 CORNER OF SECTION 30
 FOUND HAINES T-IRON FOR TRUE SW 1/16 AND HAINES T-IRON FROM RECORDED SURVEY.
 -- 37" DOUGLAS FIR BEARS N51°W, 93.1 FEET FROM TRUE SW 1/16, WELL HEALED FACE AND BLM TAG
 -- 14" DOUGLAS FIR BEARS S86 1/2°E, 8.1 FEET FROM TRUE SW 1/16, WE SCRIBE SW 1/16 S30 B.T. AND TAG TREE
 -- FROM TRUE SW 1/16 TO RECORDED T-IRON IS N50°28'W, 13.15 FEET
 CORNER LIES ON STEEP NORTHWEST FACING SLOPE APPROXIMATELY 80 FEET SOUTH OF CREEK.
- 3) THE SOUTH 1/16 CORNER FOR SECTION 30 ONLY
 FOUND HAINES T-IRON FOR TRUE SOUTH 1/16 SECTION 30.
 -- 24" DOUGLAS FIR BEARS N46 1/2°E, 18.7 FEET, LRT TAG. THIS TREE IS ALSO A BEARING TREE FOR RECORDED T-IRON (WHICH IS MISSING, POSSIBLY UNDER LARGE DOUGLAS FIR WINDTHROW)
 -- 22" DOUGLAS FIR BEARS S36°E, 27.7 FEET, LRT TAG WELL HEALED FACE
 CORNER LIES ON AN EXTREMELY STEEP NORTHEAST SLOPE. SMALL DRAW APPROXIMATELY 20 FEET EAST AND MAIN DRAW IS NORTH APPROXIMATELY 200 FEET.
- 4) CLOSING CORNER FOR SECTIONS 30 AND 31
 FOUND COUNTY BRASS CAP 0.7 FEET ABOVE GROUND IN GOOD CONDITION.
 -- 36" (ORIGINAL) CEDAR STUMP BEARS N83°E, 155.7 FEET, VERY DECAYED
 -- 48" (ORIGINAL) FIR STUMP REMAINS BEARS S29°E, 96.1 FEET, NO MARKS OR TAGS
 -- 30" DOUGLAS FIR BEARS S28°E, 89.6 FEET DOUBLE BLAZES AND B.T. TAG
 -- 27" DOUGLAS FIR BEARS N88 1/2°E, 49.5 FEET, WELL HEALED FACE AND COUNTY B.T. TAG
 -- 26" DOUGLAS FIR BEARS N71°E, 46.2 FEET, WELL HEALED FACE AND COUNTY B.T. TAG
 -- ORIGINAL CEDAR SNAG BEARS S76°E, 128.0 FEET
 -- HAINES T-IRON BEARS S8 1/2°E, 6.45 FEET
 CORNER LIES APPROXIMATELY 1 CHAIN NORTH OF YOUNG FIR TIMBER AND IN PLANTED PINE STAND. CORNER IS ALSO APPROXIMATELY 55 FEET SOUTH OF MAIN RIDGE.
- 5) WEST 1/4 CORNER FOR SECTION 30 ONLY
 FOUND COUNTY BRASS CAP 1.0 FEET ABOVE GROUND.
 -- 43" DOUGLAS FIR BEARS N58°W, 7.7 FEET FROM FACE (RECORD 7.3 FEET FROM FACE) TREES SHOWS AXE WORK AND HAS B.T. TAG
 -- 13" DOUGLAS FIR BEARS S73°E, 22.7 FEET (RECORD 22.5 FEET) HEALED SCAR AND B.T. TAG
 -- HAINES T-IRON BEARS N53°21'W, 37.1 FEET (RECORD N55°W, 37.3 FEET)
 -- BEARING TREE FOR HAINES T-IRON IS A 36" DOUGLAS FIR BEARING S75°W, 50.0 FEET
 CORNER SITS ON SOUTH FACING SLOPE AT EAST EDGE OF SMALL POCKET OF OLD GROWTH TREES.



LEGEND:

- ⊙ - FOUND MONUMENT
- - LINES FLAGGED, BLAZED & TAGGED
- - PROJECTED LINES

REGISTERED
 PROFESSIONAL
 LAND SURVEYOR

Ken W. Hoffine

OREGON
 JULY 16, 1987
 KEN W. HOFFINE
 2291

EXPIRES 6-30-97

COUNTY SURVEYORS FILE DATA
 DO NOT REMOVE FROM OFFICE

MAP FILE CS 65/2-3