

CORNER RENEWAL MAP

LONE ROCK TIMBER CO.

PO BOX 1127 ROSEBURG OREGON 97470 DATE: JUNE 1995
 SECTION 24, TOWNSHIP 22 SOUTH, RANGE 7 WEST, W.M. DOUGLAS COUNTY, OREGON
 JUNIPER PROPERTIES TRACT J22-7-24 SCALE 1" = 1000'

FILED

Date: 12-19-95 By: *[Signature]*
 This survey consists of:
 Map: L.S. 65/1-5
 Narrative: _____
 Corner Rpt: _____

DOUGLAS COUNTY
 SURVEYOR

NARRATIVE

WE INITIATED THIS SURVEY AT THE SW CORNER OF SECTION 24, A COUNTY BRASS CAP SET FROM ORIGINAL EVIDENCE, BEGINNING A RANDOM TRAVERSE EASTERLY TO THE CLOSING CORNER OF SECTION 26 AND 25, A HAINES BRASS CAP SET FROM ORIGINAL EVIDENCE. WE CONTINUED OUR TRAVERSE EASTERLY TO THE SOUTH 1/4 OF SECTION 24, A HAINES T-BAR SET BY PROPORTION CONTINUING TO THE SOUTHEAST CLOSING CORNER OF SECTION 24, A HAINES T-BAR SET FROM ORIGINAL EVIDENCE. WE THEN TRAVERSED BACK WESTERLY 6.8 CHAINS TO THE TOP OF THE RIDGE AND SHOT 4950 FEET TO A TRAVERSE POINT NEAR THE WEST 1/4 OF SECTION 24, A HAINES T-BAR SET FROM ORIGINAL EVIDENCE. WE CONTINUED OUR TRAVERSE SOUTH TO CLOSE OUR TRAVERSE BACK AT THE SOUTHWEST CORNER. WE BEGAN A NEW TRAVERSE AT THE SOUTHEAST CORNER OF SECTION 24, TYING INTO OUR PREVIOUS TRAVERSE TO THE WEST AND AT OUR SURVEY FOR SECTION 30, T22S, R6W (CS #63/154-5) TRAVERSING NORTHERLY TO THE WEST 1/4 OF SECTION 19, A HAINES T-BAR SET FROM ORIGINAL EVIDENCE. WE CONTINUED OUR TRAVERSE NORTHERLY TO THE NE CORNER OF SECTION 24, A HAINES T-BAR SET FROM ORIGINAL EVIDENCE. A CORNER WE TIED INTO FOR SUBDIVISION OF SECTION 18, T22S, R6W (# M 121-43). COMBINING OUR SURVEY INFORMATION WE THEN CLOSED OUR TRAVERSE WITH A 9500 FEET SHOT BY TYING IN PERMANENT POINTS WE ESTABLISHED ON RIDGES NEAR THE WEST 1/4 OF SECTION 18 AND THE CW 1/16 OF SECTION 30.

CORNER INFORMATION

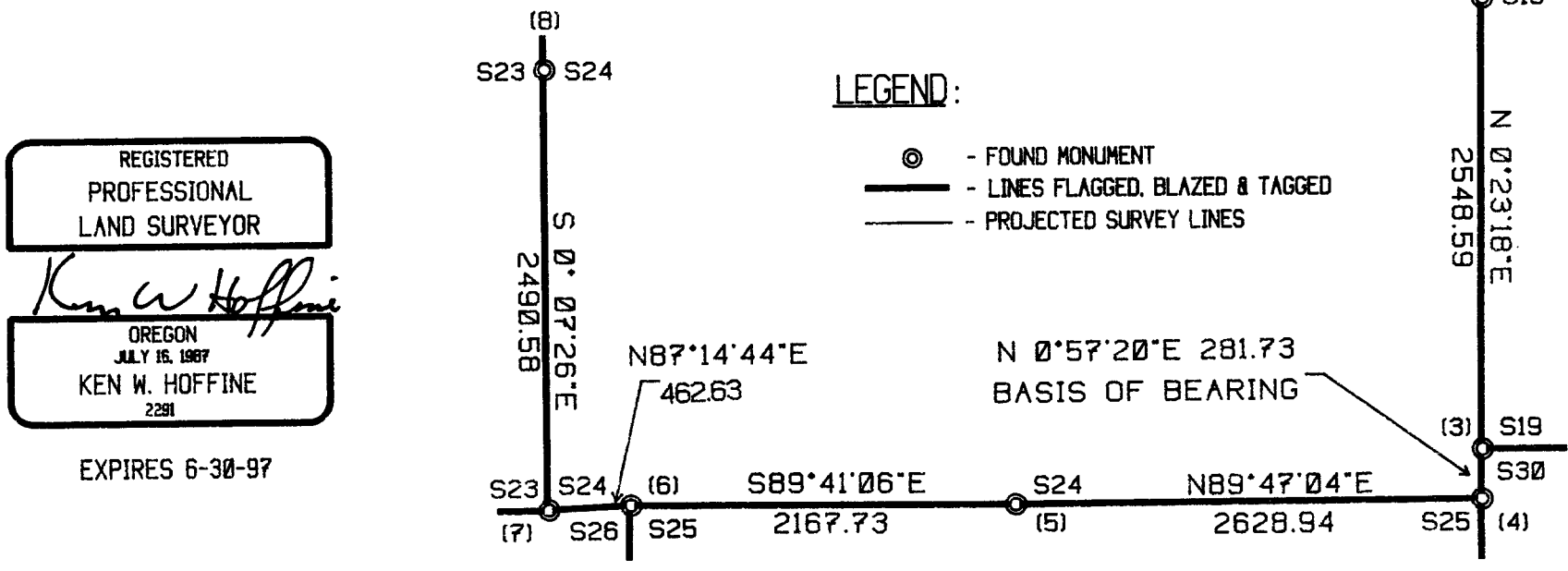
THE FOLLOWING IS A RECORD OF ALL CORNERS FOUND DURING THE COURSE OF THIS SURVEY.

- 1) NORTHEAST CORNER OF SECTION 24
 FOUND: HAINES T-BAR 0.3 FEET ABOVE GROUND.
 -- 36" DOUGLAS FIR STUMP BEARS S66°55'W, 13.5 FEET, HAINES WASHER AND BARK SCRIBING
 -- 27" DOUGLAS FIR STUMP BEARS N77°32'E, 25.1 FEET, CHOPPED OUT FACE, HAINES WASHER AND B.T. TAG
 -- 70" DOUGLAS FIR STUMP BEARS S70°E, 55.7 FEET, BARK SCRIBING VISIBLE
 -- 21" DOUGLAS FIR BEARS S47°W, 32.4 FEET, VISIBLE SCRIBING AND LRT TAG
 CORNER LIES ON A 40% SLOPE TO THE NORTHWEST.
- 2) WEST 1/4 SECTION 19
 FOUND: HAINES T-IRON 0.4 FEET ABOVE GROUND.
 -- 6" DOUGLAS FIR BEARS N80°56'E, 10.0 FEET, VISIBLE SCRIBING WITH LRT TAG
 -- 43" DOUGLAS FIR STUMP (OR. B.T.) WITH TIN CAP BEARS S32°41'W, 12.9 FEET, FACE IS BURNED OUT
 -- 26" DOUGLAS FIR BEARS S75°55'W, 3.4 FEET, A WELL HEALED FACE WITH SPIKE AT BOTTOM
 -- DECAYED ROOTWAD BEARS N57°27'E, 45.2 FEET
 CORNER LIES ON A BENCH GENTLY SLOPING TO THE SOUTH APPROXIMATELY 540.0 FEET NORTH OF THISTLEBURN ROAD.
- 3) NORTHWEST SECTION CORNER OF SECTION 30
 FOUND: COUNTY BRASS CAP
 -- 48" DOUGLAS FIR BEARS N80°E, 13.5 FEET, CHOPPED OUT FACE AND 4 TAGS
 -- 9" DOUGLAS FIR BEARS S57°E, 9.6 FEET, WELL HEALED FACE AND B.T. TAG
 -- 8" DOUGLAS FIR BEARS N30°E, 11.6 FEET (RECORD N36°E), WELL HEALED FACE AND B.T. TAG
 -- 12" DOUGLAS FIR BEARS S77°E, 2.4 FEET, LRT LOCATION TAG
 -- HAINES T-BAR 0.4 FEET ABOVE GROUND BEARS S74°37'W, 47.9 FEET.
 CORNER SITS ON SOUTH EDGE OF SPUR RIDGE SLOPING NORTHEAST WITH VERY STEEP EAST SIDE SLOPE. APPROXIMATELY 260 FEET WEST OF CREEK.
- 4) SOUTHEAST SECTION CORNER OF S24
 FOUND: HAINES T-IRON.
 -- 18" DEAD MAPLE BEARS S68°W, 31.5 FEET, SCRIBING VISIBLE AND BLM TAG
 -- 28" WESTERN RED CEDAR BEARS N8°E, 26.2 FEET, SCRIBING BARELY VISIBLE TREE HAS BUTT ROT
 -- 12" MAPLE BEARS S39°E, 13.5 FEET, WELL HEALED FACE, LRT LOCATION TAG
 CORNER LIES ON VERY STEEP EAST SLOPE APPROXIMATELY 6.8 CHAINS EAST OF RIDGE TOP AND 3 CHAINS WEST OF CREEK BOTTOM.
- 5) SOUTH 1/4 CORNER OF SECTION 24
 FOUND: HAINES T-BAR.
 -- 36" DOUGLAS FIR BEARS S63°E, 73.0 FEET, BARK SCRIBED AND B.T. TAGGED
 -- 22" DOUGLAS FIR (DECAYED SNAG) BEARS N33°W, 21.8 FEET, BARK SCRIBED AND B.T. TAGGED
 -- 22" GRAND FIR BEARS N66°E, 12.0 FEET, LRT TAG ONLY
 CORNER LIES APPROXIMATELY 75 FEET EAST OF SMALL CLEARING, IN YOUNG TIMBER.
- 6) CLOSING CORNER OF SECTION 25 AND 26
 FOUND: HAINES T-IRON
 -- 33" DOUGLAS FIR BEARS S59°E, 33.0 FEET, WELL HEALED SCAR WITH BOTH COUNTY AND BLM TAGS (ORIGINAL BT).
 -- 62" DOUGLAS FIR STUMP BEARS S85°W, 26.4 FEET, WELL HEALED FACE, BOTH COUNTY AND BLM TAGS (ORIGINAL BT).
 -- 23" DOUGLAS FIR STUMP BEARS S40°W, 57.9 FEET, WELL HEALED FACE WITH COUNTY TAG
 CORNER LIES NEAR BASE OF 30" DOUGLAS FIR ON SOUTH FACING SLOPE, 100 FEET SOUTH OF TOP OF SPUR RIDGE.
- 7) SOUTHWEST SECTION CORNER OF S24
 FOUND: DOUGLAS COUNTY SURVEYOR BRASS CAP WITH HAINES T-IRON SET ALONGSIDE.
 -- 26" DOUGLAS FIR STUMP BEARS N31 1/2°E, 29.0 FEET, WELL HEALED SCAR, BOTH COUNTY AND BLM TAGS
 -- 34" DOUGLAS FIR STUMP BEARS S23°E, 13.3 FEET, WELL HEALED FACE WITH BOTH COUNTY AND BLM TAGS
 -- 8" MAPLE BEARS WEST 52.6 FEET, SCRIBING VISIBLE, LONE ROCK LOCATION TAG
 CORNER LIES ON STEEP SOUTHEAST SLOPE NEAR TOP OF SPUR RIDGE.
- 8) WEST 1/4 CORNER OF SECTION 24
 FOUND: BLM BRASS CAP AND HAINES T-IRON IS SET ALONG SIDE.
 -- 16" CEDAR BEARS S55°W, 3.7 FEET WITH A WELL HEALED SCAR AND B.T. TAG (ORIGINAL B.T.)
 -- 9" DOUGLAS FIR BEARS N32 1/2°E, 17.7 FEET WITH A WELL HEALED SCAR AND LRT LOCATION TAG
 CORNER LIES ON A STEEP NORTHWEST SLOPE AT BOTTOM OF CLEARCUT, APPROXIMATELY 70.0 FEET NORTH OF STUMP AREA.

COUNTY SURVEYORS FILE DATA
DO NOT REMOVE FROM OFFICE



BASIS OF BEARING
 FROM MAP 63/154-5



REGISTERED
 PROFESSIONAL
 LAND SURVEYOR

[Signature: Ken W. Hoffine]
 OREGON
 JULY 15, 1987
 KEN W. HOFFINE
 2281

EXPIRES 6-30-97