

Date: 11-28-95 By: JP  
This survey consists of:  
Map: \_\_\_\_\_  
Narrative: \_\_\_\_\_  
Corner Rpt: C.S. 65/1-3

OREGON CORNER RESTORATION FORM

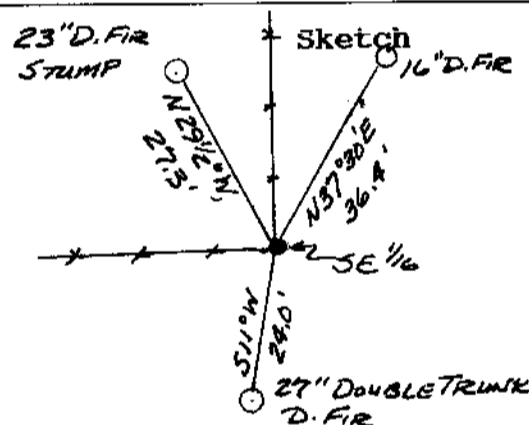
Section 26 Township 29S Range 6W

County Douglas Date November 3, 1995 **DOUGLAS COUNTY**  
Corner Designation \_\_\_\_\_ Condition Report Only **SURVEYOR**  
SE 1/16 \_\_\_\_\_ Not Found  
 Renewed  
Unrecorded  
Surveyed in  
Referenced Out

Previous Renewals/Surveys, etc. \_\_\_\_\_  
Monument originally established by Howard Johnstone in 1978  
under RM 3-12

Monument(s) & Accessories Found: (Condition and Source)  
A 5/8" iron rod by Johnstone in 1978 per RM 3-12, firmly set,  
projecting 12" above the ground with a 2" aluminum cap stamped  
as below:  
from which bearing trees by Johnstone in 1978:  
A 27" Double Trunked D. Fir bears S. 11°W., 24.0 feet with a  
healed blaze (Rec. S. 16° W.)  
A 23" D. fir stump bears N. 29 1/2°W., 27.4 feet with the lower  
portion of a healed blaze. (Rec. S. 29°E., 27.3 feet)

Monument Detail  
29S R6W  
SE 1/16  
S26  
LS 498 1978



Monument Set (Procedures and Description)  
\_\_\_\_\_  
\_\_\_\_\_  
\_\_\_\_\_  
\_\_\_\_\_

New Accessories  
A 16" D. fir Bears N. 37°30'E., 36.4 feet scribed  
"SE 1/16 S26 BT" on a double blaze with a brass washer stamped  
"PLS 1941" nailed in lower blaze.

Location & Comments \_\_\_\_\_ Staff compass \_\_\_\_\_  
Corner falls ± 400' \_\_\_\_\_ Compass Declination 20° E. \_\_\_\_\_  
East of Boomer Hill \_\_\_\_\_ Firm/Agency BTS Engineering \_\_\_\_\_  
Road 0.5 ft North of \_\_\_\_\_ & Surveying, Inc. \_\_\_\_\_  
fence corner with \_\_\_\_\_ Address 431 S.E. Main St. \_\_\_\_\_  
fence running North \_\_\_\_\_ Roseburg, OR 97470 \_\_\_\_\_  
and West. \_\_\_\_\_ Party Chief L. Fanning \_\_\_\_\_  
Notes \_\_\_\_\_ Witness M. Dixon \_\_\_\_\_

Surveyor's Seal  
REGISTERED  
PROFESSIONAL  
LAND SURVEYOR  
*Kristian O. DeGroot*  
OREGON  
JULY 17, 1981  
KRISTIAN O. DEGROOT  
1941