

GOVERNMENT CORNER RESTORATION FORM

Date: 3-3-1998 By: X

This survey consists of: _____

Township 25S Range 6W Sec. 18 County DOUGLAS Map: _____

State OR Date 2-26-98 No. _____

Narrative: _____

Corner Designation RENEWED POSITION OF CORNER DETERMINED IN 1978 RENEWAL

Corner Rpt: 64/79-37

DOUGLAS COUNTY SURVEYOR

Condition Report Only

Not Found

Renewed

Unrecorded

Surveyed In

Referenced Out

MONUMENT DETAIL

$\frac{1}{4} \frac{18}{19}$

Previous Renewals 1978 BAUGHMAN

Monument(s) Found: (Condition and Source)

2 1/2" DIA. BRASS CAP ON A 1 1/2" O.D. IRON PIPE PROTRUSING 6" ABOVE GROUND, 1978

T25S R6W WM

$\frac{1}{4} \frac{518}{519}$

1978 OLS 536

Accessories Found:

- 26" NOW 46" DIA. B. OAK WITH A PREVIOUSLY OPENED PARTIALLY HEALED BLAZE, NO SCRIBING VISIBLE BEARS 158°/20E, 89.8 FT TO CENTER OF TRUNK (1978 REC. N 88 1/2° E, 87.0 FT) OBT
- ORIG SW BT NOT FOUND
- 10" NOW 13" DIA D.FIR WITH PARTIALLY HEALED BURNT SINGLE BLAZE, ILLEGIBLE SCRIBING VISIBLE, BEARS 57°/0E 12.6 FT (REC. 583° E, 12.6 FT) 1978
- 9" NOW 10" DIA. 4 FT HIGH D.FIR STUMP WITH A PARTIALLY HEALED BURNT SINGLE BLAZE, ILLEGIBLE SCRIBING VISIBLE, BEARS N 90° E, 27.7 FT (REC. N 12° W, 27.5 FT) 1978

Monument Set (Procedure and Description)

Monument Detail

NONE

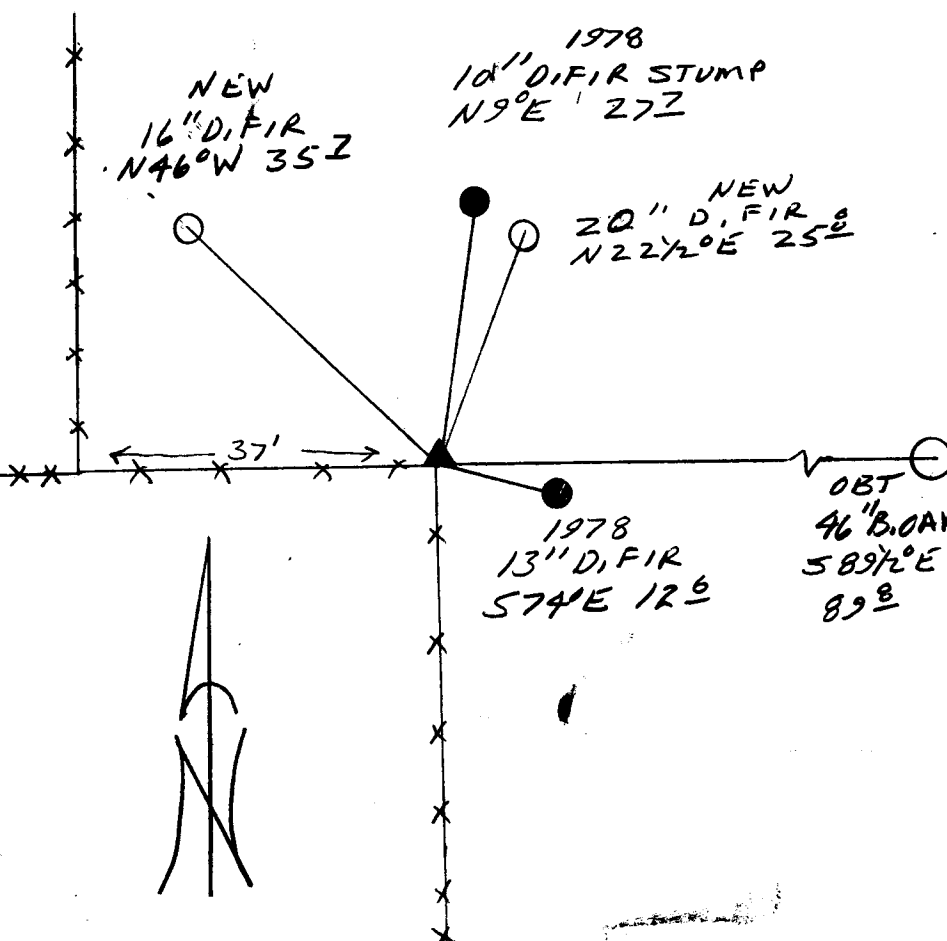
N/A

New Accessories

20" DIA. D.FIR DOUBLE BLAZED AND SCRIBED "Y4S18CS BT"
BEARS N 22 1/2° E, 25.8 FT

16" DIA D.FIR DOUBLE BLAZED AND SCRIBED "Y4S18CS BT"
BEARS N 46° W, 35.7 FT

Sketch of Monument, Accessories, and General Area



Location & Comments

RENEWED POSITION OF
CORNER AS DETERMINED
BY 1978 RENEWAL

CORNER LIES AT THE
INTERSECTION OF FENCES
RUNNING SOUTH AND
WEST. 37' WEST FENCE
RUNS NORTH

Comp. Declin. 173/9° E
Agency DCSC
Party Chief RANDALL W. SMITH
Notekeeper J. G. W. ...
Witnesses STEPHEN J. CLAUSE

Address

Surveyor's Seal

REGISTERED
PROFESSIONAL
LAND SURVEYOR

Randall W. Smith
EXPIRES 6-30-98

OREGON
JULY 25, 1900
RANDALL W. SMITH
2409