

GOVERNMENT CORNER RESTORATION FORM

Date: 2/21/1998 By: JC

This survey consists of:

Township 25S Range 7W Sec. 7 County DOUGLAS Map: \_\_\_\_\_

State OR Date 2-18-98 No. \_\_\_\_\_

Narrative: \_\_\_\_\_

Comer Rpt: 64/79-31

Corner Designation

1/4 S 7 | S 8

DOUGLAS COUNTY SURVEYOR

Condition Report Only

Not Found

Renewed

Unrecorded

Surveyed In

Referenced Out

Previous Renewals 1923 + 1961 DCSO

Monument(s) Found: (Condition and Source)

2 1/2" DIA. BRASS CAPONAL 1/2" O.D. IRON PIPE, PROTRUDES 9" ABOVE GROUND. 1961

MONUMENT DETAIL

COUNTY SURVEYORS OFFICE

T 25S R 7W

1/4 S 7 | S 8

W.C.

49.3 S. TO

COR.

1961

Accessories Found:

48" NOW 48" DIA. 3 FT HIGH D. FIR STUMP W/ OPEN BLAZE AND FIND ROTTED BLAZE WITH A LOWER AXE MARK AND SCRIBING "T" RECORD BEARING TO ORIG. CORNER "N 5° W 49.5 FT" BEARING TO WIT. CORNER N 65° W, 61.0 FT. (OBT)

48" NOW 36" DIA BADLY ROTTED 6 FT HIGH STUMP NO BLAZING OR SCRIBING VISIBLE. RECORD BEARING TO ORIG COR. "N 35° E 58.7 FT" BEARING TO WIT. CORNER N 79° E 27.0 FT (OBT?)

BEARINGS TAKEN FROM WIT. CORNER ON BT'S BELOW  
10" NOW 29" DIA MYRTLE WITH A LARGE PREVIOUSLY OPENED UNHEALED BLAZE, SCRIBING VISIBLE "C" BEARS S 73 1/2° W, 14.5 FT TO CENTER OF ROOTCROWN (REC. S 69° W, 13.2 FT DIST GOOD TO BLAZE) W/ SINGLE BLAZE 5 FT HIGH AND SCRIBE "C.S. BT." (1923)

1923 SE BT NOW GONE, CLUMP OF YOUNG MYRTLES REMAIN NEAR RECORD "S 75 1/2° E, 23.3 FT"

19" NOW 25" DIA. D. FIR WITH A FULLY HEALED DOUBLE BLAZE BEARS N 69° W, 16.2 FT (AGREES WITH REC.) (1961)

9" NOW 11" DIA. MYRTLE WITH A PARTIALLY HEALED DOUBLE BLAZE, ILLEGIBLE SCRIBING VISIBLE, BEARS N 85 1/2° E 45.7 FT (AGREES WITH REC.) 1961

C.S. File No. 64/79-31

200540.014

Monument Set (Procedure and Description)

Monument Detail

NINE

---



---



---



---



---



---



---



---



---



---



---



---



---



---



---



---



---



---



---



---



---



---

N/A

New Accessories  
 6" DIA O.FIR DOUBLE BLAZED AND SCRIBED "1/57CS13T"  
 BEARS N26 1/2°W, 18.6 FT

---



---

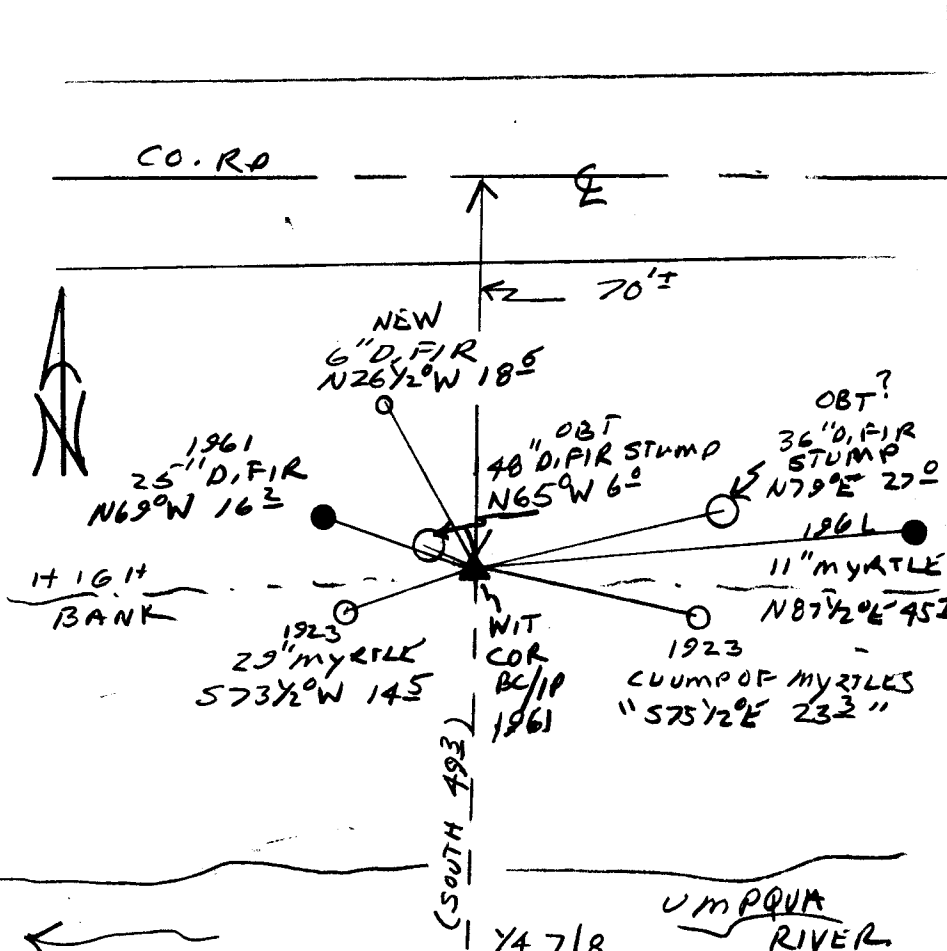


---



---

Sketch of Monument, Accessories, and General Area



Location & Comments

CORNER LIES APPROX  
 70 FT SOUTH OF  
 PAVED ROAD CENTER LINE  
 ON HIGH BANK OF  
 UMPQUA RIVER.

Comp. Declin. 17 3/4° E  
 Agency DCSO  
 Party Chief RANDALL W SMITH  
 Notekeeper [Signature]  
 Witnesses STEPHEN J FLAVER

Address

Surveyor's Seal

REGISTERED  
 PROFESSIONAL  
 LAND SURVEYOR

Randall W Smith  
 EXPIRES 6-30-99

OREGON  
 JULY 25, 1900  
 RANDALL W. SMITH  
 2469