

GOVERNMENT CORNER RESTORATION FORM

Date: 2/12/98 By: X

Township 29S Range 2W Sec. 34

County DOUGLAS This survey consists of: Map

State OK Date 2-10-98

No. Narrative:

Corner Designation

Corner Rpt: 64-79-27

S34 | S35

S3

- DOUGLAS COUNTY
- Condition Not Found Only
- Not Found
- Renewed
- Unrecorded
- Surveyed In
- Referenced Out

Previous Renewals 1968

MONUMENT DETAIL

| Monument(s) Found: | (Condition and Source) |
|---|------------------------|
| <u>2 1/2" BRASS CAP ON 1 1/2" IRON PIPE PROTRUDES 13 IN ABOVE GROUND 1968</u> | |
| <u>18" X 12" X 4" STONE FOUND LOOSE ON TOP OF GROUND 2 FT WEST OF BC/IP. STONE IS MARKED ON TWO SIDES. 2 HATCHES ON ONE SIDE AND 4 ON ITS OPPOSITE. ORIG. STONE</u> | |
| | |
| | |
| | |
| | |
| | |
| | |
| | |

COUNTY SURVEYORS OFFICE
T29S R2W

S34 | S35

S3
T30S
1968

Accessories Found:

40" NOW 44" DIA. 2 FT HIGH D/FIR STUMP BEARS N12 1/2° W, 31.0 FT (AGREES WITH REC.) - EBT

ORIG NE BT NOW GONE

16" NOW 17" DIA. 3 FT HIGH HEMLOCK STUMP WITH SCRIBING VISIBLE ON A PARTIALLY HEALED BLAZE "85 CS" BEARS N 8° E, 26.6 FT (AGREES WITH REC.) 1968

1968 SW BT NOW GONE

DCSO 1968 BC/IP T29S R2W
 S35
 S3 | S2
 T30S

BEARS EAST 32.0 FT (REC. EAST 33.7)

Monument Set (Procedure and Description)

Monument Detail

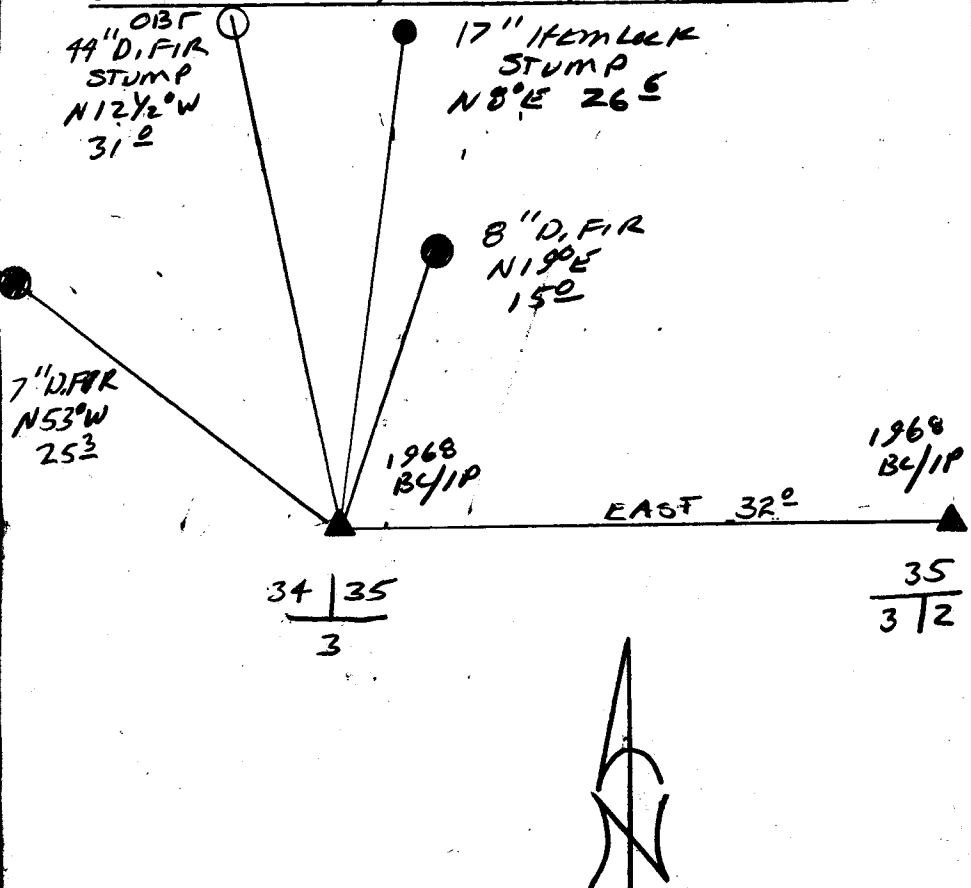
STONE PLACED LOGS ALONG WEST EDGE OF BC/IP.

N/A

New Accessories

8" DIA. D. FIR DOUBLE BLAZED AND SCRIBED "T295 R2W S35 CSBT" BEARS N 19° E, 15.0 F7
7" DIA D. FIR DOUBLE BLAZED AND SCRIBED "T295 R2W S34 CSBT" BEARS N 53° W 25.3 F7

Sketch of Monument, Accessories, and General Area



Location & Comments

METAL CAPS ARE ON BT STUMPS
Comp. Declin. N 7 3/4° E
Agency DCSD
Party Chief RANDALL W. SMITH
Notekeeper [Signature]
Witnesses STEPHEN J. FRANK

Address 35 3/2

Surveyor's Seal



OREGON
JULY 25, 1990
RANDALL W. SMITH
2405